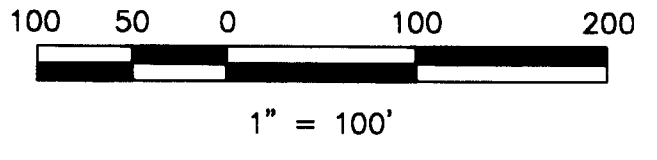
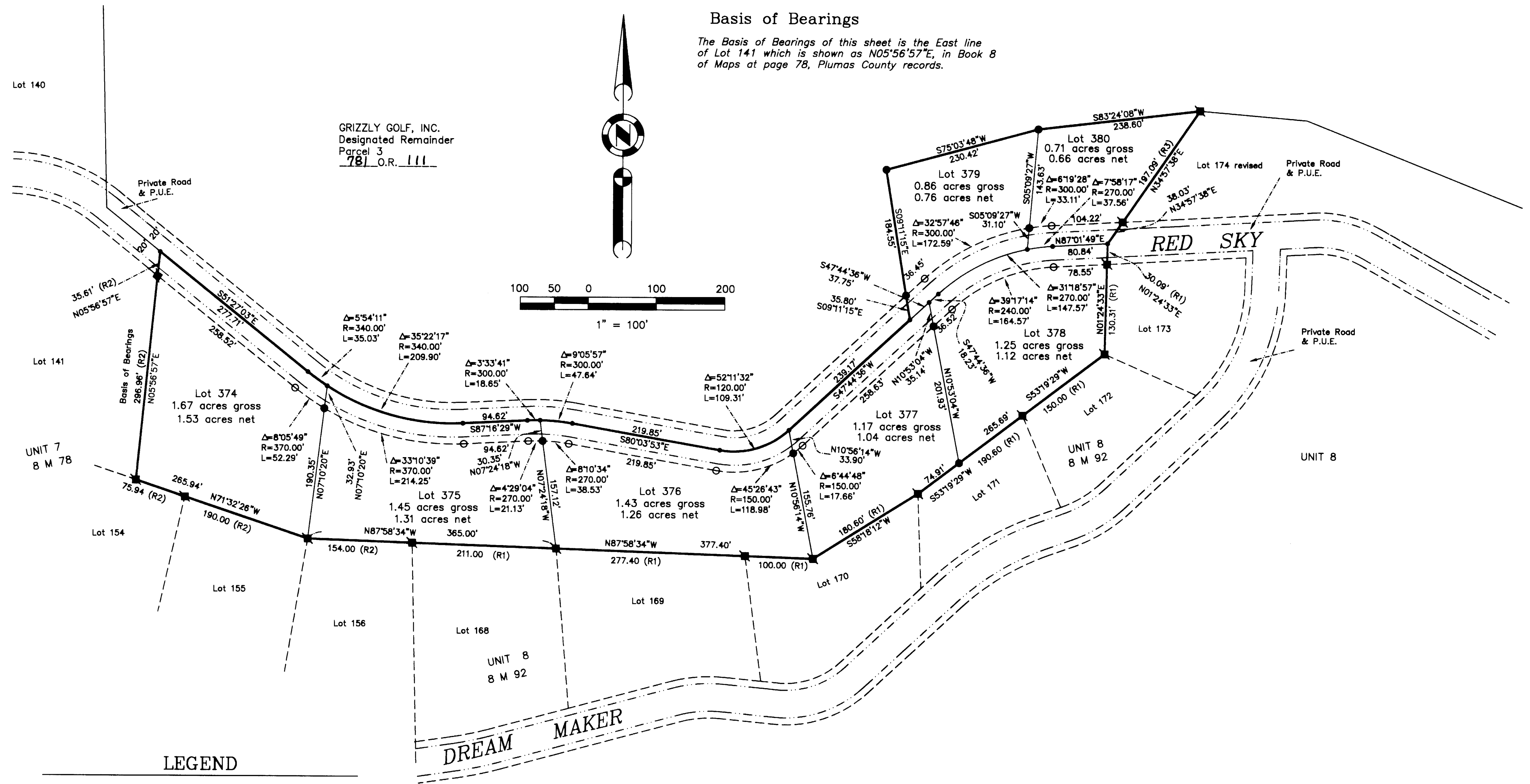


Basis of Bearings

The Basis of Bearings of this sheet is the East line of Lot 141 which is shown as N05°56'57"E, in Book 8 of Maps at page 78, Plumas County records.



GRIZZLY GOLF, INC.  
Designated Remainder  
Parcel 3  
78 O.R. 111



LEGEND

- FOUND point as described
- FOUND Aluminum Cap LS 2843 per Unit 7 - 8 M 78 or Unit 8 - 8 M 92.
- SET 5/8" Rebar & Aluminum Cap LS 2843
- SET 5/8" Rebar & Plastic Cap LS 2843
- FOUND Rebar with Plastic Cap LS 2843
- Nothing found or set
- - - 10' Snowstorage, Landscape & P.U.E. easement
- . - . Road and P.U.E. easement
- P.U.E. Public Utility easement for underground utilities.
- (R1) Record per Unit 8, 8 M 92
- (R2) Record per Unit 7, 8 M 78.
- (R3) Record per 11 RS 63.

GOLD MOUNTAIN  
UNIT 15 "EAGLES NEST"  
a Planned Development  
for  
Gold Mountain Ranch, Inc.  
A Portion of Sections 15, 16 & 22  
T. 22 N., R 13 E., M.D.M.  
Plumas County, California  
Scale 1" = 100' July, 1999

Hamby Surveying Inc.  
P.O. Box 1209  
Portola, CA 96122  
(530) 832-5571