

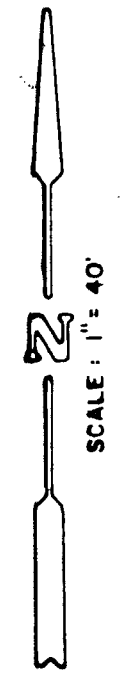
LOCATION MAP
NO SCALE

BASIS OF BEARINGS

THE BASIS OF BEARINGS FOR THIS SURVEY IS THE SOUTH LINE OF LOT 24 OF LAKE ALMANOR PENINSULA, UNIT 2 SUBDIVISION, BETWEEN FOUND MONUMENTS AS SHOWN.
TAKEN AS ... NORTH 87°47'00" WEST

LEGEND

- FOUND MONUMENT AS DESCRIBED
- SET 5/8" REBAR WITH PLASTIC CAP, R.C.E. 29113
- ⊙ CALCULATED POINT, NOTHING FOUND OR SET
- (M) FIELD MEASURED DATA
- (R-1) DATA AS DESCRIBED ON MAP RECORDED JULY 27, 1953, IN BOOK 1 OF MAPS, AT PAGE 61
- (C) CALCULATED DATA

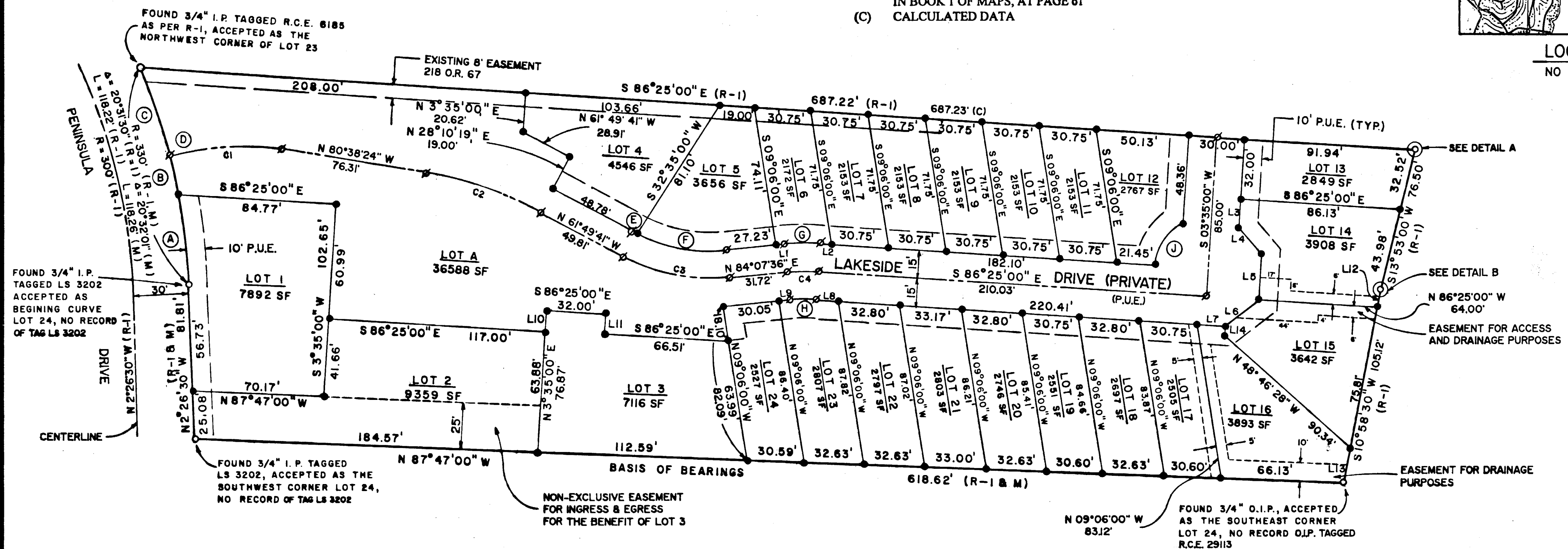


FOUND 5/8" REBAR WITH CAP UNREADABLE, NO RECORD TAGGED R.C.E. 29113
N 86°25'00" E
N 61°49'02" E, 0.30'

DETAIL A
NO SCALE

EASTERLY CORNER LOTS 23/24 (R-1)
S 43°42'01" E, 2.33'
FOUND 3/8" REBAR WITH CAP LS 5949, NO RECORD
N 10°58'30" E

DETAIL B
NO SCALE



CURVE DATA

CURVE	RADIUS	LENGTH	DELTA
(A)	330.00'	48.73'	8°27'40"
(B)	330.00'	20.84'	3°37'06"
(C)	330.00'	48.69'	8°27'15"
(D)	330.00'	69.53'	12°04'21"
(E)	85.00'	1.75'	1°10'56"
(F)	85.00'	48.75'	32°51'47"
(G)	115.00'	18.98'	9°27'24"
(H)	85.00'	14.03'	9°27'24"
(J)	28.00'	26.15'	53°30'41"
C1	150.00'	62.52'	23°52'52"
C2	200.00'	65.67'	18°48'43"
C3	100.00'	59.42'	34°02'43"
C4	100.00'	16.51'	9°27'24"

LINE DATA

LINE DATA	LENGTH	BEARING
L1	4.49'	N 84°07'36" E
L2	6.91'	S 86°25'00" E
L3	15.40'	S 03°35'00" W
L4	18.38'	S 41°25'00" E
L5	24.60'	S 03°35'00" W
L6	22.89'	S 52°38'26" W
L7	15.33'	N 86°25'00" W
L8	12.34'	N 86°25'00" W
L9	6.09'	S 84°07'36" W
L10	13.00'	N 03°35'00" E
L11	11.77'	S 03°35'00" W
L12	9.81'	S 10°58'30" W
L13	19.50'	S 10°58'30" W
L14	5.00'	S 03°35'00" W

KOKANEE SUBDIVISION
FOR
Almanor Lakeside Villas, L.L.C.
A PLANNED UNIT DEVELOPMENT

BEING A
RESUBDIVISION OF LOTS 23 AND 24, BLOCK 4
OF LAKE ALMANOR PENINSULA, UNIT 2
BEING A PORTION OF SECTION 19, T.28 N., R.8 E.
PLUMAS COUNTY CALIFORNIA

RAR
ROLLS ANDERSON & ROLLS
CIVIL ENGINEERS
115 YELLOWSTONE DRIVE - CHICO, CALIFORNIA 95973-5811