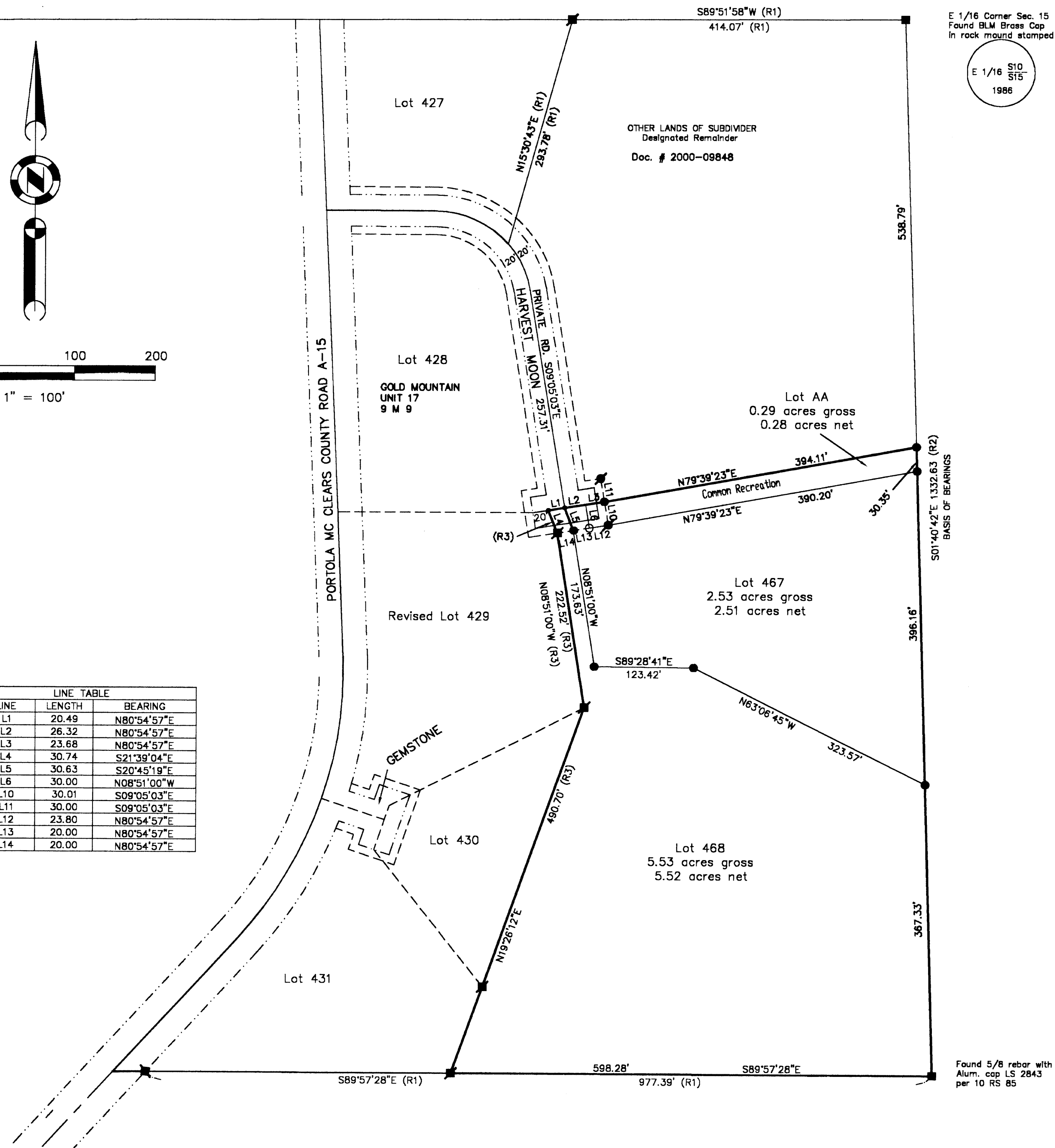


| LINE TABLE |        |             |
|------------|--------|-------------|
| LINE       | LENGTH | BEARING     |
| L1         | 20.49  | N80°54'57"E |
| L2         | 26.32  | N80°54'57"E |
| L3         | 23.68  | N80°54'57"E |
| L4         | 30.74  | S21°39'04"E |
| L5         | 30.63  | S20°45'19"E |
| L6         | 30.00  | N08°51'00"W |
| L10        | 30.01  | S09°05'03"E |
| L11        | 30.00  | S09°05'03"E |
| L12        | 23.80  | N80°54'57"E |
| L13        | 20.00  | N80°54'57"E |
| L14        | 20.00  | N80°54'57"E |



- LEGEND**
- Found Point as described
  - ▣ Found Aluminum Cap LS 2843 per Unit 17, 9 M 9.
  - ▣ Found Plastic Cap LS 2843 per Unit 17, 9 M 9.
  - SET 5/8" rebar with Aluminum Cap LS 2843
  - SET 5/8" rebar with Plastic Cap LS 2843
  - Nothing Found or Set
  - 10' Snowstorage, Landscape & P.U.E. easement per 9 M 9
  - - - Road & P.U.E. easement per 9 M 9
  - (R1) RECORD per Unit 17, 9 M 9.
  - (R2) RECORD per 10 RS 85
  - (R3) Record per Lot Line Adjustment Doc. #2000-09848

**Basis of Bearings**

The basis of bearings for this map is the East line of The W1/2 of the NE 1/4 of Section 15, shown as N01°40'42"W on 10 RS 85.

**GOLD MOUNTAIN  
UNIT 18 "GEMSTONE"**  
a Planned Development  
for  
Gold Mountain Ranch, Inc.  
A Portion of Sections 15,  
T. 22 N., R 13 E., M.D.M.  
Plumas County, California  
Scale 1"=100' Sept. 2000

Hamby Surveying Inc.  
P.O. Box 1209  
Portola, CA 96122  
(530) 832-5571