

BASIS OF BEARING

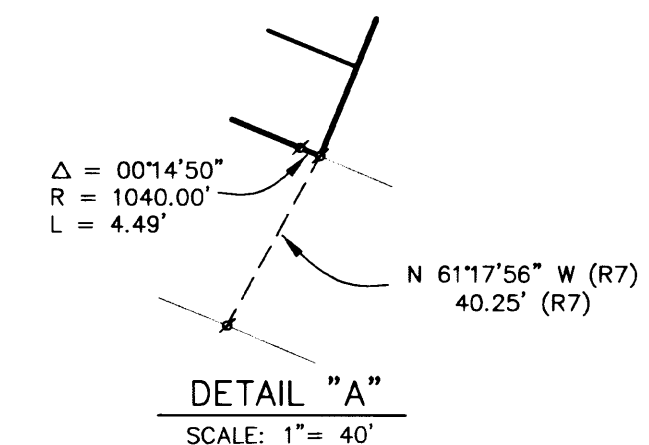
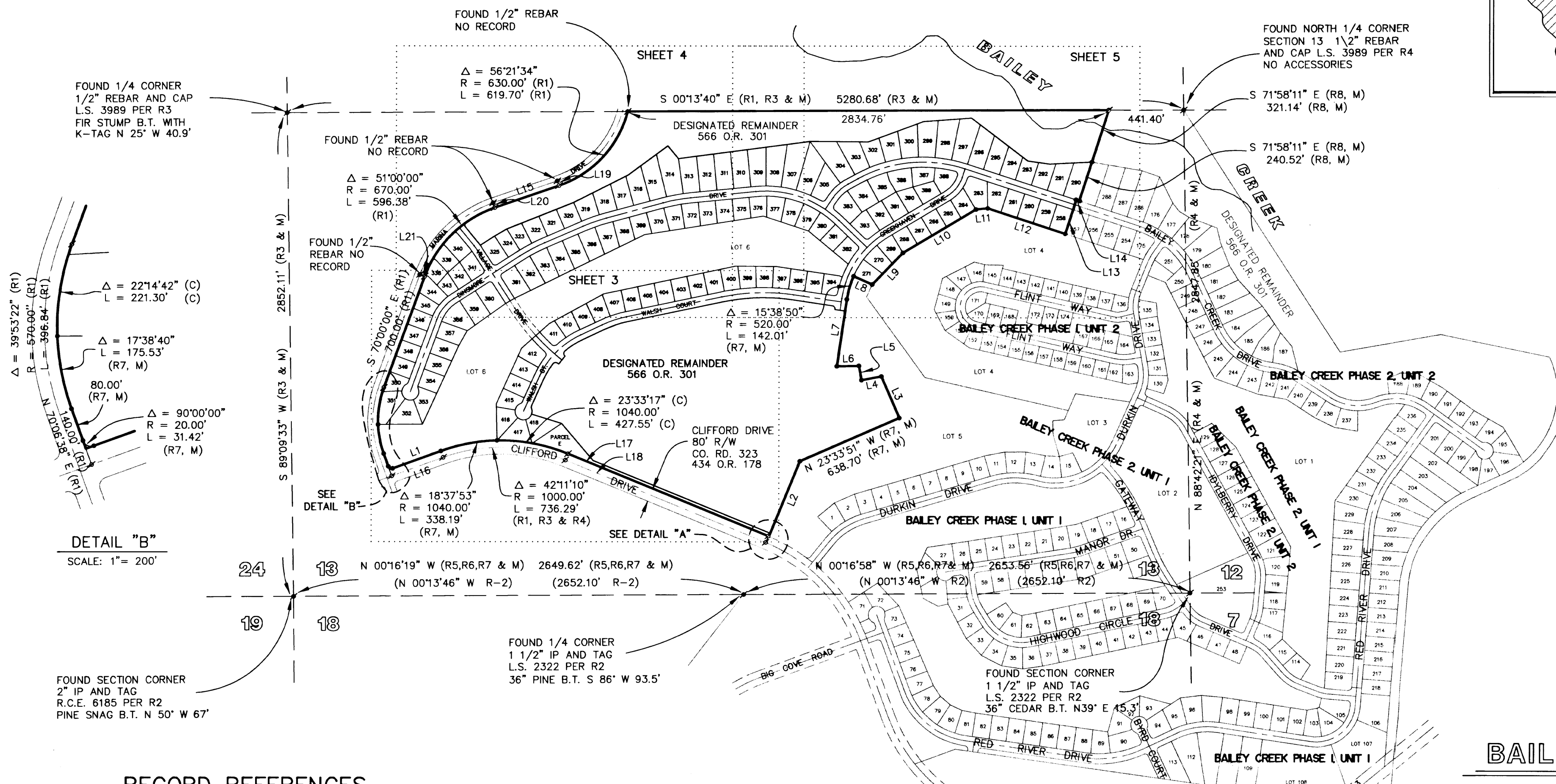
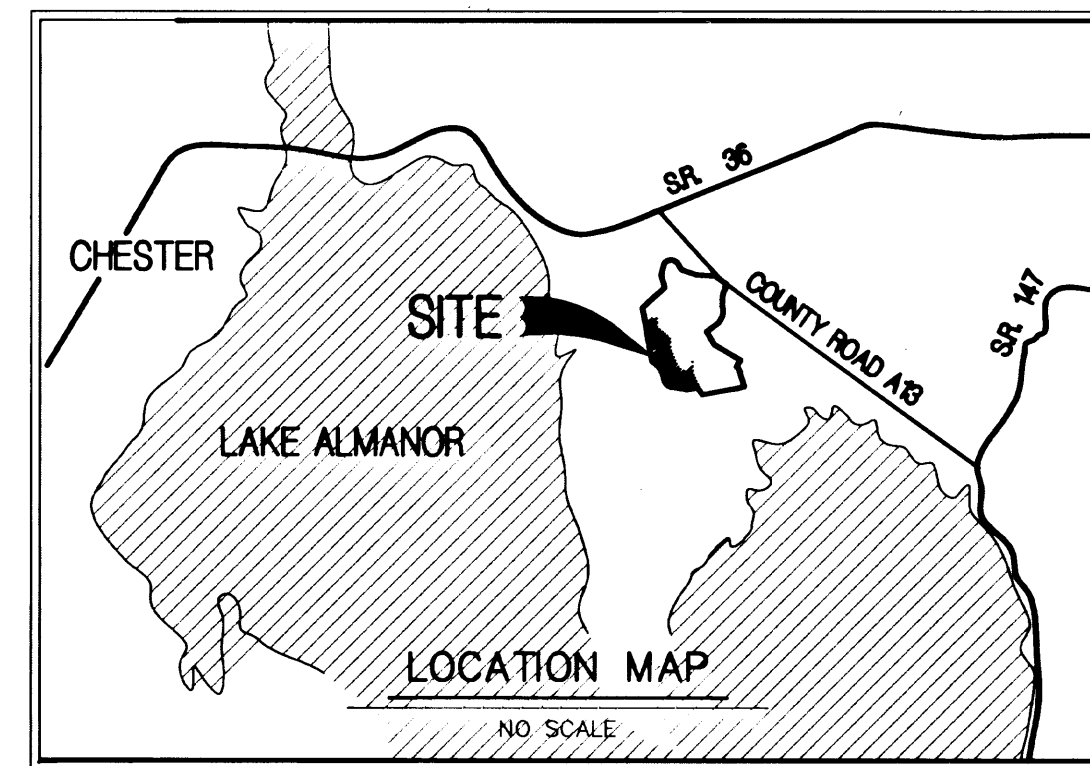
THE BASIS OF BEARING FOR THIS SURVEY IS A SOLAR OBSERVATION TAKEN AT THE INTERSECTION OF WALKER ROAD (CLIFFORD DRIVE) AND COUNTY ROAD A-13 ON AUGUST 5, 1983 BY NST ENGINEERING AND UTILIZED FOR DESCRIPTION WITHIN 434 O.R. 178.

LEGEND

- ✕ CALCULATED POINT, NO MONUMENT FOUND OR SET
- SET 5/8" REBAR WITH PLASTIC CAP MARKED R.C.E. 29113
- ✕ FOUND MONUMENT AS NOTED
- FOUND 5/8" REBAR & CAP MARKED R.C.E. 29113 PER R-4,R-5

NOTE: AN ADDITIONAL INFORMATION DOCUMENT IS ON FILE WITH THE COUNTY RECORDER IN DOCUMENT **2601-10583** O.R.

SCALE 1" = 500'



LINE TABLE

LINE	BEARING	LENGTH
L1	S19°53'22"E (R7, M)	301.52' (R7, M)
L2	S67°42'11"E (R7, M)	478.91' (R7, M)
L3	S66°26'09"W (R7, M)	266.32' (R7, M)
L4	S10°23'04"E (R7, M)	118.94' (R7, M)
L5	N79°36'56"E (R7, M)	85.00' (R7, M)
L6	S00°51'44"E (R7, M)	130.00' (R7, M)
L7	S81°36'24"E (R7, M)	400.96' (R7, M)
L8	S24°02'26"W (R7, M)	120.00' (R7, M)
L9	N45°56'27"W (R7, M)	260.25' (R7, M)
L10	S30°47'09"E (R7, M)	500.00' (R7, M)
L11	S05°03'17"E (R7, M)	70.16' (R7, M)
L12	S18°01'49"W (R7, M)	480.41' (C, M)
L13	N71°58'11"W (R8, M)	210.00' (R8, M)
L14	S18°01'49"W (R8, M)	18.25' (R8, M)
L15	N19°00'00"W (R1)	400.00' (R1)
L16	N19°53'22"W (R1)	620.75' (R1)
L17	N22°17'49"E	1275.65' (C)
L18	N22°17'49"E (R1,R3 & R4)	1275.65' (R1,R3 & R4)
L19	S71°00'00"W (C)	30.00' (C)
L20	S71°00'00"W (C)	30.00' (C)
L21	S20°00'00"W (C)	30.00' (C)

**PHASE 3, UNIT 1
BAILEY CREEK SUBDIVISION**

FOR
BAILEY CREEK INVESTORS

A PORTION OF DESIGNATED REMAINDER AS SHOWN ON THAT MAP OF BAILEY CREEK SUBDIVISION, PHASE 2, UNIT 2, RECORDED IN BOOK 9 OF MAPS, AT PAGES 27 THRU 32 ALSO BEING A PORTION OF SECTION 13, TOWNSHIP 28 NORTH RANGE 7 EAST M.D.M.

RECORD REFERENCES

- | | |
|---|--|
| <p>R1 RECORD DATA PER DEED RECORDED IN BOOK 566 OF OFFICIAL RECORDS AT PAGE 301</p> <p>R2 RECORD DATA PER RECORD OF SURVEY RECORDED IN BOOK 3 OF SURVEYS, PAGE 56</p> <p>R3 RECORD DATA PER CORNER RECORD OF THE SOUTH 1/4 CORNER OF SECTION 13 T28N R7E</p> <p>R4 RECORD DATA PER CORNER RECORD OF THE NORTH 1/4 CORNER OF SECTION 13 T28N R7E</p> <p>R5 RECORD DATA PER SUBDIVISION MAP ENTITLED PHASE 1, UNIT 1 OF THE BAILEY CREEK SUBDIVISION FILED IN THE OFFICE OF THE COUNTY RECORDER OF THE COUNTY OF PLUMAS, STATE OF CALIFORNIA, BOOK 8 OF MAPS, PAGES 19-23</p> | <p>R6 RECORD DATA PER SUBDIVISION MAP ENTITLED PHASE 1, UNIT 2 OF THE BAILEY CREEK SUBDIVISION FILED IN THE OFFICE OF THE COUNTY RECORDER OF THE COUNTY OF PLUMAS, STATE OF CALIFORNIA, BOOK 8 OF MAPS, PAGES 99-101</p> <p>R7 RECORD DATA PER SUBDIVISION MAP ENTITLED PHASE 2, UNIT 1 OF THE BAILEY CREEK SUBDIVISION FILED IN THE OFFICE OF THE COUNTY RECORDER OF THE COUNTY OF PLUMAS, STATE OF CALIFORNIA, BOOK 9 OF MAPS, PAGES 1-8</p> <p>R8 RECORD DATA PER SUBDIVISION MAP ENTITLED PHASE 2, UNIT 2 OF THE BAILEY CREEK SUBDIVISION FILED IN THE OFFICE OF THE COUNTY RECORDER OF THE COUNTY OF PLUMAS, STATE OF CALIFORNIA, BOOK 9 OF MAPS, PAGES 27-32</p> <p>M MEASURED BEARING OR DISTANCE</p> <p>C CALCULATED BEARING OR DISTANCE</p> |
|---|--|

PLUMAS COUNTY, CALIFORNIA

AUGUST, 2001 SHEET 2 OF 6 JOB NO. 00139