

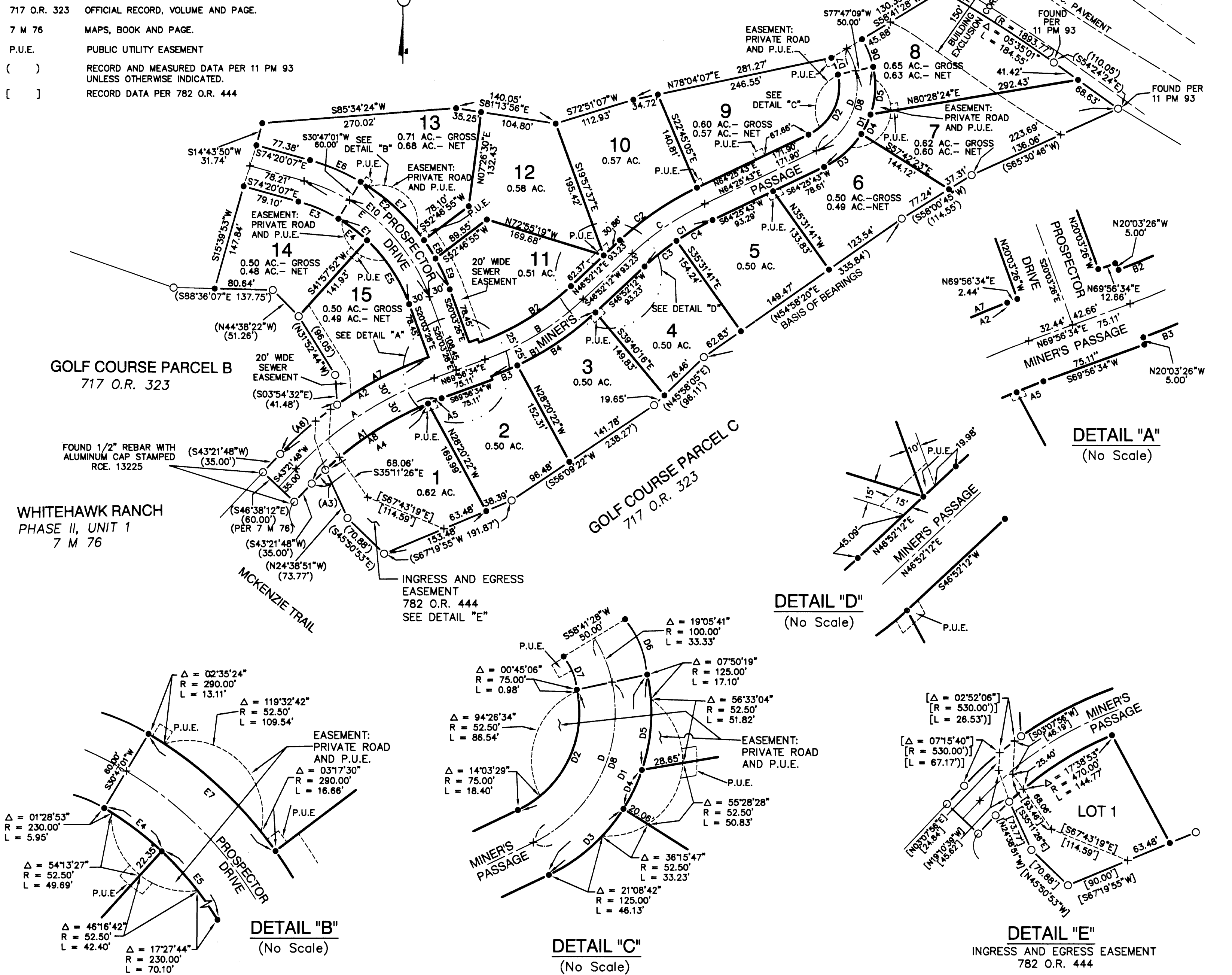
**LEGEND**

- FOUND MONUMENT : 1/2" REBAR WITH ALUMINUM CAP STAMPED L.S. 7045, PER 11 RS 81 OR 11 PM 93 UNLESS OTHERWISE NOTED.
- SET 1/2" REBAR WITH ALUMINUM CAP STAMPED L.S. 7045
- X COMPUTED POINT, NOTHING SET.
- 717 O.R. 323 OFFICIAL RECORD, VOLUME AND PAGE.
- 7 M 76 MAPS, BOOK AND PAGE.
- P.U.E. PUBLIC UTILITY EASEMENT
- ( ) RECORD AND MEASURED DATA PER 11 PM 93 UNLESS OTHERWISE INDICATED.
- [ ] RECORD DATA PER 782 O.R. 444

SCALE: 1" = 100'

**DESIGNATED REMAINDER PARCEL**

DOC. NO. 2001-5920

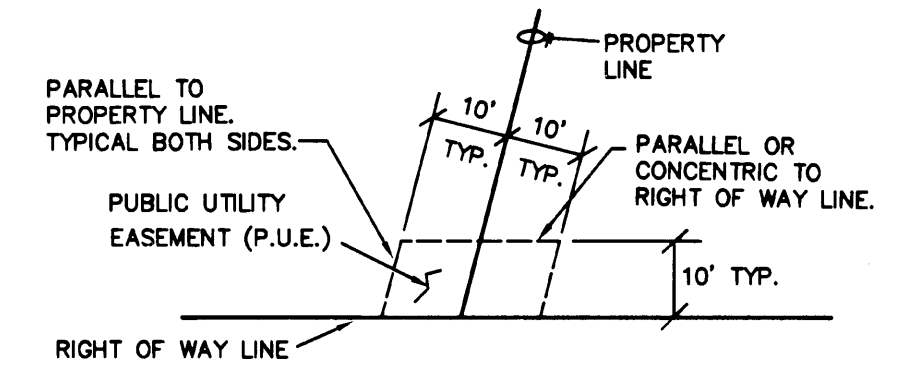


**CURVE TABLE**

CURVE	RADIUS	LENGTH	DELTA
A	500.00'	231.95'	26°34'45"
A1	470.00'	218.03'	26°34'45"
A2	530.00'	245.86'	26°34'45"
(A3)	470.00'	27.00'	03°17'29"
A4	470.00'	197.79'	24°06'42"
A5	470.00'	20.24'	02°28'03"
(A6)	530.00'	104.92'	11°20'32"
A7	530.00'	140.95'	15°14'13"
A8	470.00'	170.79'	20°49'14"
B	400.00'	161.08'	23°04'22"
B1	425.00'	171.15'	23°04'22"
B2	375.00'	151.01'	23°04'22"
B3	425.00'	39.32'	05°18'01"
B4	425.00'	131.83'	17°46'21"
C	400.00'	122.58'	17°33'31"
C1	375.00'	114.92'	17°33'31"
C2	425.00'	130.24'	17°33'31"
C3	375.00'	57.01'	08°42'36"
C4	375.00'	57.92'	08°50'56"
D	100.00'	167.09'	95°44'16"
D1	125.00'	167.21'	76°38'34"
D2	75.00'	100.33'	76°38'34"
D3	125.00'	70.11'	32°08'06"
D4	125.00'	30.00'	13°45'04"
D5	125.00'	67.10'	30°45'24"
D6	125.00'	41.66'	19°05'41"
D7	75.00'	25.00'	19°05'41"
DB	100.00'	133.77'	76°38'34"
E	260.00'	246.31'	54°16'41"
E1	230.00'	157.19'	39°09'32"
E2	290.00'	198.20'	39°09'32"
E3	230.00'	60.69'	15°07'08"
E4	230.00'	50.00'	12°27'20"
E5	230.00'	107.19'	26°42'12"
E6	290.00'	76.52'	15°07'08"
E7	290.00'	120.87'	23°52'47"
E8	290.00'	30.12'	05°57'04"
E9	290.00'	47.21'	09°19'41"
E10	260.00'	177.70'	39°09'32"

**NOTE:**

1. THE BASIS OF BEARINGS FOR THIS MAP IS A NORTHERLY LINE OF GOLF COURSE PARCEL C, SHOWN AS N 54°58'20" E IN BOOK 11 OF RECORDS OF SURVEY AT PAGE 81, PLUMAS COUNTY RECORDS.
2. SEWER EASEMENTS SHOWN WILL BE RESERVED IN THE DEEDS FOR THE RESPECTIVE LOTS. EASEMENTS WILL NOT BECOME EFFECTIVE UNLESS OR UNTIL RESERVATIONS OR GRANTS ARE INCLUDED IN THE DEEDS.
3. AN ADDITIONAL INFORMATION DOCUMENT IS BEING RECORDED CONCURRENTLY WITH THIS SUBDIVISION MAP IN DOCUMENT NO. 2002-02673, PLUMAS COUNTY RECORDS.



**TYPICAL DETAIL**  
PUBLIC UTILITY EASEMENT (P.U.E.)  
(AT LOCATIONS SHOWN)

**WHITEHAWK RANCH  
PHASE VII - UNIT 1**  
A PLANNED DEVELOPMENT  
FOR  
SULPHUR CREEK PARTNERS, LLC  
WITHIN A PORTION OF: SECTION 32, T. 22 N., R. 13 E., M.D.M.  
PLUMAS COUNTY, CALIFORNIA

PREPARED BY:  
**BASTIAN ENGINEERING**  
P.O. BOX 280  
GRAEAGLE, CALIFORNIA 96103  
L.S. 7045

JULY 2001

SHEET 2 OF 2