

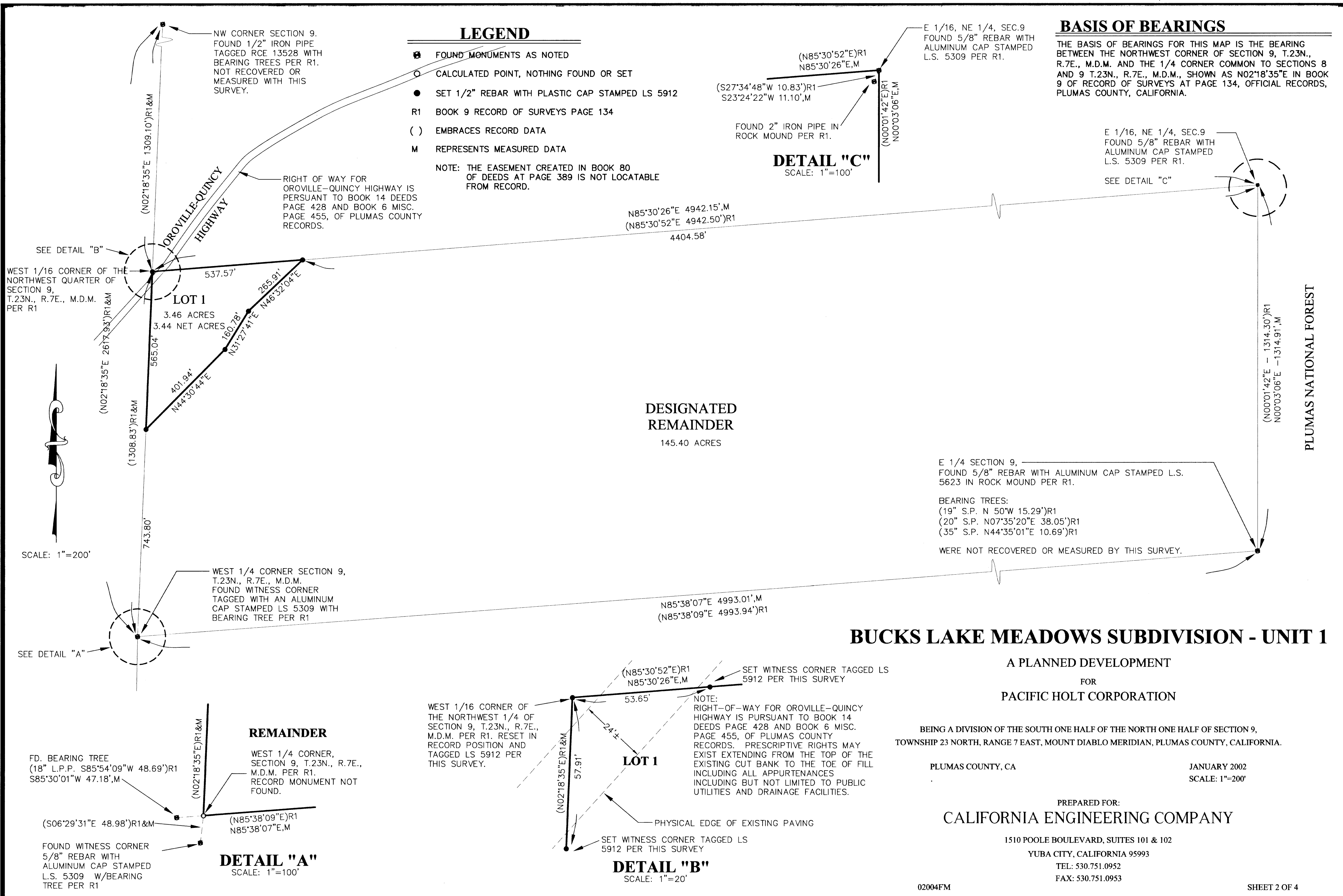
LEGEND

- ☒ FOUND MONUMENTS AS NOTED
- CALCULATED POINT, NOTHING FOUND OR SET
- SET 1/2" REBAR WITH PLASTIC CAP STAMPED LS 5912
- R1 BOOK 9 RECORD OF SURVEYS PAGE 134
- () EMBRACES RECORD DATA
- M REPRESENTS MEASURED DATA

NOTE: THE EASEMENT CREATED IN BOOK 80 OF DEEDS AT PAGE 389 IS NOT LOCATABLE FROM RECORD.

BASIS OF BEARINGS

THE BASIS OF BEARINGS FOR THIS MAP IS THE BEARING BETWEEN THE NORTHWEST CORNER OF SECTION 9, T.23N., R.7E., M.D.M. AND THE 1/4 CORNER COMMON TO SECTIONS 8 AND 9 T.23N., R.7E., M.D.M., SHOWN AS N02°18'35"E IN BOOK 9 OF RECORD OF SURVEYS AT PAGE 134, OFFICIAL RECORDS, PLUMAS COUNTY, CALIFORNIA.



BUCKS LAKE MEADOWS SUBDIVISION - UNIT 1

A PLANNED DEVELOPMENT
FOR
PACIFIC HOLT CORPORATION

BEING A DIVISION OF THE SOUTH ONE HALF OF THE NORTH ONE HALF OF SECTION 9,
TOWNSHIP 23 NORTH, RANGE 7 EAST, MOUNT DIABLO MERIDIAN, PLUMAS COUNTY, CALIFORNIA.

PLUMAS COUNTY, CA

JANUARY 2002

SCALE: 1"=200'

PREPARED FOR:
CALIFORNIA ENGINEERING COMPANY

1510 POOLE BOULEVARD, SUITES 101 & 102
YUBA CITY, CALIFORNIA 95993

TEL: 530.751.0952

FAX: 530.751.0953

02004FM

SHEET 2 OF 4