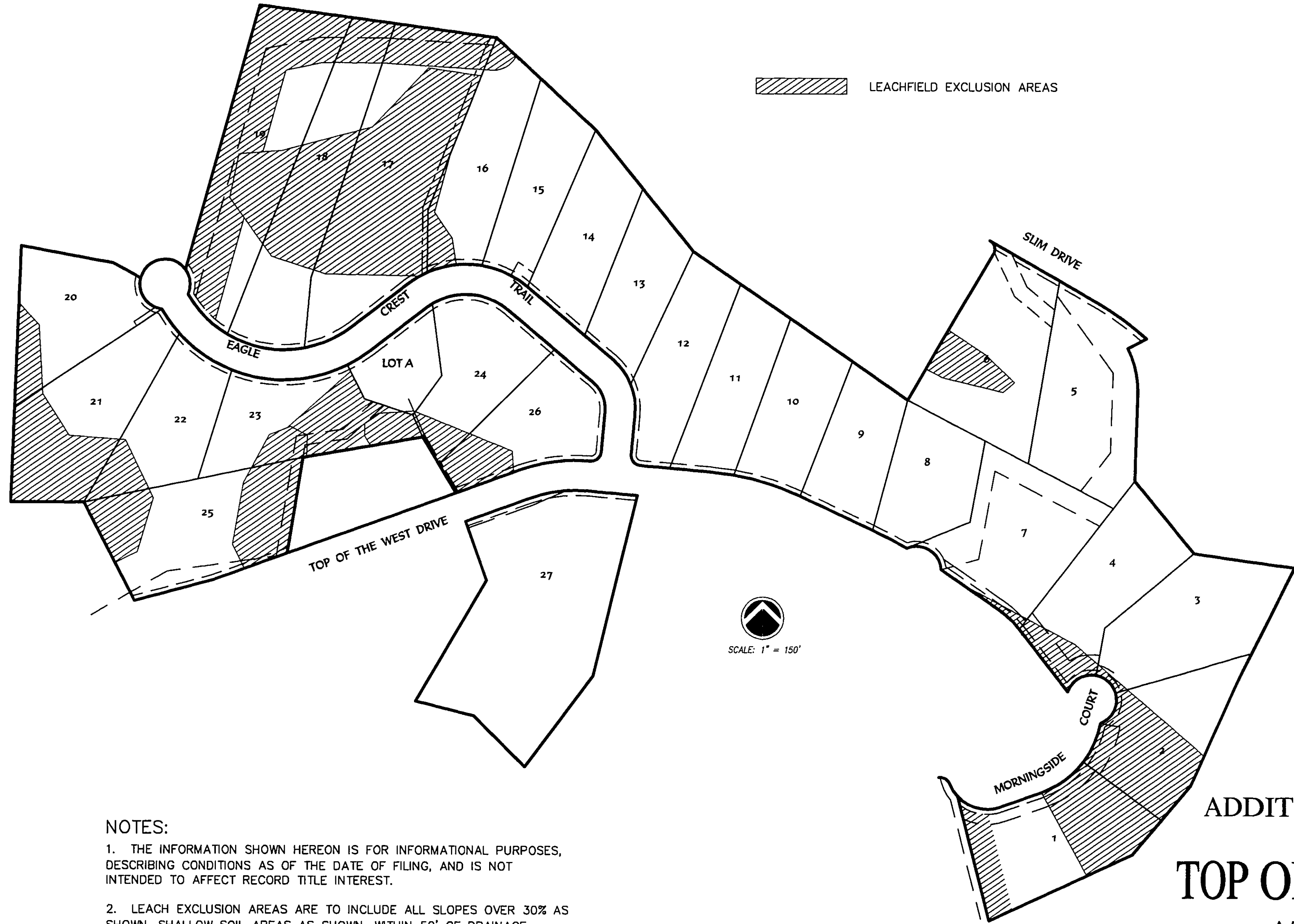


STAGE TWO, HOMESITE DEVELOPMENT (TO BE REQUIRED OF FUTURE HOME BUILDERS AND/OR DEVELOPERS OF PROJECT LANDS:

 LEACHFIELD EXCLUSION AREAS



- A. VEGETATION REMOVAL, CLEARING, AND GRADING SHALL ENTAIL NO MORE THAN IS PRUDENT FOR CONSTRUCTION OF THOSE FACILITIES NECESSARY FOR THE USE AND ENJOYMENT OF THE PROPERTY, IN THE OPINION OF THE COUNTY ENGINEER. CLEARING AND GRADING ACTIVITIES SHALL BE LIMITED TO SIX DRY SUMMER MONTHS (MAY 1 THROUGH OCTOBER 31). TREE AND BRUSH REMAINS SHALL BE CHIPPED AND SPREAD RATHER THAN BURNED. EARTH-DISTURBING ACTIVITIES OUTSIDE OF THIS SEASON WILL NECESSITATE PREPARATION AND APPROVAL OF AN INTERIM PLAN PROVIDING TEMPORARY CONSTRUCTION EROSION-CONTROL MEASURES.
- B. CUT SLOPES SHALL BE NO STEEPER THAN 1 TO 1 UNLESS STABLE ROCK IS PRESENT IN THE OPINION OF THE COUNTY ENGINEER.
- C. UNTREATED FILL SLOPES SHALL BE NO STEEPER THAN 1.5 TO 1; SLOPES UP TO 1 TO 1 MAY BE PERMITTED IN SPECIFIC INSTANCES WHERE THE COUNTY ENGINEER DETERMINES THAT STABILITY IS NOT COMPROMISED, IN WHICH CASE EROSION CONTROL MEASURES IN THE FORM OF ROCK RIP-RAP AND/OR STAPLED EROSION-CONTROL BLANKETS SHALL BE INSTALLED.
- D. ALL DRAINAGE DITCHES AND CULVERTS WITH A LONGITUDINAL GRADE EXCEEDING 7% SHALL BE ROCK-LINED WITH 2-INCH TO 8-INCH STONES, UNLESS SUCH DITCHES ARE IN AREAS OF ROCK WHICH IN THE OPINION OF THE COUNTY ENGINEER DO NOT PRESENT AN EROSION HAZARD.
- E. INLETS AND OUTLETS OF ALL CULVERTS SHALL BE ROCKED TO PREVENT EROSION AND UNDERCUTTING.
- F. CONCENTRATION OF DRAINAGE'S SHOULD BE AVOIDED WHERE POSSIBLE BY UTILIZING "SHEET FLOW" FROM TOES OF FILLS.
- G. ALL SITE, EROSION CONTROL, AND DRAINAGE WORK SHALL BE COMPLETED CONCURRENTLY WITH LOT DEVELOPMENT, AND SHALL BE REVIEWED BY THE COUNTY ENGINEER AT THE TIME OF FINAL BUILDING INSPECTIONS, TO INSURE THE CONSTRUCTED FACILITIES ARE PERFORMING SATISFACTORILY, AND/OR TO REQUIRE ANY ADDITIONAL CORRECTIVE MEASURES TO PROTECT THE QUALITY OF LAKE ALMANOR.

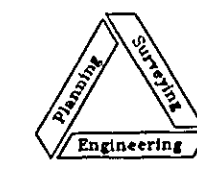
NOTES:

- 1. THE INFORMATION SHOWN HEREON IS FOR INFORMATIONAL PURPOSES, DESCRIBING CONDITIONS AS OF THE DATE OF FILING, AND IS NOT INTENDED TO AFFECT RECORD TITLE INTEREST.
- 2. LEACH EXCLUSION AREAS ARE TO INCLUDE ALL SLOPES OVER 30% AS SHOWN, SHALLOW SOIL AREAS AS SHOWN, WITHIN 50' OF DRAINAGE EASEMENTS AS SHOWN, AND WITHIN A SETBACK DISTANCE OF 4 TIMES A CUT BANK HEIGHT FROM THE TOP OF BANK, IN CONJUNCTION WITH THE REQUIREMENTS OF PLUMAS COUNTY ORDINANCE 76-162.

ADDITIONAL INFORMATION SHEET
OF
TOP OF THE WEST, UNIT No. 4
AT LAKE ALMANOR WEST

A SUBDIVISION OF LOT'S 27, 28 & 29, OF TOP OF THE WEST UNIT 1 & PARCEL #2 AS SHOWN ON 11 RS 77

IN SECTION 33, T28N, R7E MDB&M
PLUMAS COUNTY, CALIFORNIA



NST Engineering, Inc.
1495 Riverside Drive
Susanville, CA 96130
(530) 257-5173