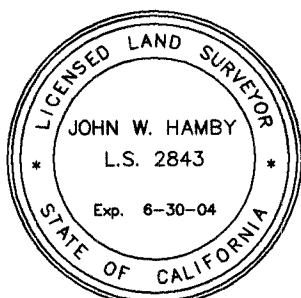


SURVEYOR'S STATEMENT

THIS MAP AND THE SURVEY PERFORMED THEREFOR IN MARCH, 2003, WERE MADE BY ME OR UNDER MY DIRECTION. THE SURVEY IS TRUE AND COMPLETE AS SHOWN. ALL OF THE MONUMENTS SHOWN HEREON ARE OF THE CHARACTER AND OCCUPY THE POSITIONS INDICATED AND ARE SUFFICIENT TO ENABLE THE SURVEY TO BE RETRACED.



DATED: 11-25-'03

John W. Hamby
JOHN W. HAMBY L.S. 2843

COUNTY TAX COLLECTOR'S CERTIFICATE

I, GINNY DUNBAR, TAX COLLECTOR OF THE COUNTY OF PLUMAS, STATE OF CALIFORNIA, DO HEREBY CERTIFY THAT THERE ARE NO TAX LIENS AGAINST THE LOTS AS SHOWN HEREON FOR UNPAID STATE, COUNTY, MUNICIPAL OR LOCAL TAXES OR SPECIAL ASSESSMENTS COLLECTED AS TAXES, EXCEPT TAXES OR ASSESSMENTS NOT YET PAYABLE. TAXES OR ASSESSMENTS WHICH ARE A LIEN BUT NOT YET PAYABLE ARE ESTIMATED TO BE IN THE AMOUNT OF none.

DATED: 12-2-03

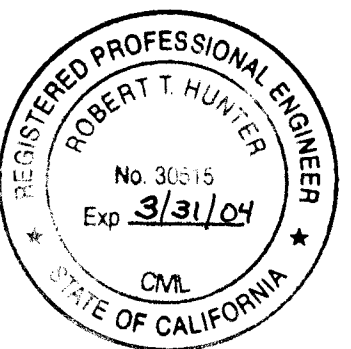
Ginny Dunbar
GINNY DUNBAR
PLUMAS COUNTY TAX COLLECTOR

COUNTY SURVEYOR'S STATEMENT

I HAVE EXAMINED THIS MAP AND FIND IT IS SUBSTANTIALLY THE SAME AS IT APPEARED ON THE TENTATIVE MAP AND ANY APPROVED ALTERATIONS THEREOF. ALL PROVISIONS OF THE SUBDIVISION MAP ACT AND ANY LOCAL ORDINANCES APPLICABLE AT THE TIME OF APPROVAL OF THE TENTATIVE MAP HAVE BEEN COMPLIED WITH, AND I AM SATISFIED THAT THE MAP IS TECHNICALLY CORRECT.

DATED: 12/1/2003

R. Tom Hunter
R. TOM HUNTER R.C.E. 30515
PLUMAS COUNTY SURVEYOR
LICENSE EXP. DATE 3-31-04



OWNER'S STATEMENT

GRIZZLY CREEK DEVELOPMENT, L.L.C., HAVING RECORD TITLE INTEREST IN THE HEREIN SUBDIVIDED LANDS, DOES HEREBY CONSENT TO THE PREPARATION AND RECORDATION OF THIS MAP.

BLACKTAIL RIDGE, GRIZZLY RANCH ROAD, ARROWLEAF ROAD, GRAY FOX LANE, BLUE FLAX LANE, PEPPERGRASS LANE, SORREL LANE, CLUBHOUSE DRIVE AND SPRING MEADOW DRIVE, CREEK ROAD AND P.U.E. EASEMENTS AS SHOWN ON THE MAP ARE HEREBY OFFERED FOR DEDICATION AS PUBLIC UTILITY EASEMENTS FOR UNDERGROUND UTILITIES, AND AS ACCESS FOR MAINTENANCE THEREOF AND WILL BE GRANTED TO THE GRIZZLY RANCH ASSOCIATION AS PRIVATE ROADS, P.U.E.S AND SNOW STORAGE EASEMENTS FOR COMMON USE OF THE OWNERS OF GRIZZLY RANCH ASSOCIATION. SAID PRIVATE ROADS WILL BE MAINTAINED BY THE GRIZZLY RANCH ASSOCIATION.

GRIZZLY CREEK DEVELOPMENT, L.L.C.
A DELAWARE LIMITED LIABILITY COMPANY

BY: GRIZZLY CREEK MANAGER, L.L.C.
A CALIFORNIA LIMITED LIABILITY COMPANY
ITS MANAGING MEMBER

BY: DDC GRIZZLY CREEK, INC.,
A CALIFORNIA CORPORATION
ITS MANAGER

John Turner
JOHN TURNER
ASSISTANT VICE PRESIDENT

Michael A. Mohler
MICHAEL A. MOHLER
SENIOR VICE PRESIDENT

TRUSTEE'S CERTIFICATE

CAL-SIERRA TITLE COMPANY, AS TRUSTEE UNDER A DEED OF TRUST DATED 1-9-2002, AND RECORDED ON 1-11-2002, INST. # 2002-000905 DOES HEREBY CONSENT TO THE PREPARATION AND RECORDING OF THIS MAP AND CONSENTS TO THE DEDICATION FOR UNDERGROUND PUBLIC UTILITY EASEMENTS AND ACCESS FOR MAINTENANCE AS SHOWN.

DATED: 11-25-2003

CAL - SIERRA TITLE COMPANY
By: *David O. Windle*
DAVID O. WINDLE
PRESIDENT

State of CALIFORNIA }
County of PLUMAS }

On 11-25-2003 before me, *S. Paul Sen*
personally appeared *David O. Windle*

personally known to me - OR - proved to me on the basis of satisfactory evidence to be the person whose name is subscribed to the within instrument and acknowledged to me that he executed the same in his authorized capacity, and that by his signature on the instrument the person or the entity upon behalf of which the person acted, executed the instrument.

My Commission expires 2-2-2007 WITNESS my hand and official seal.

David O. Windle
1428311

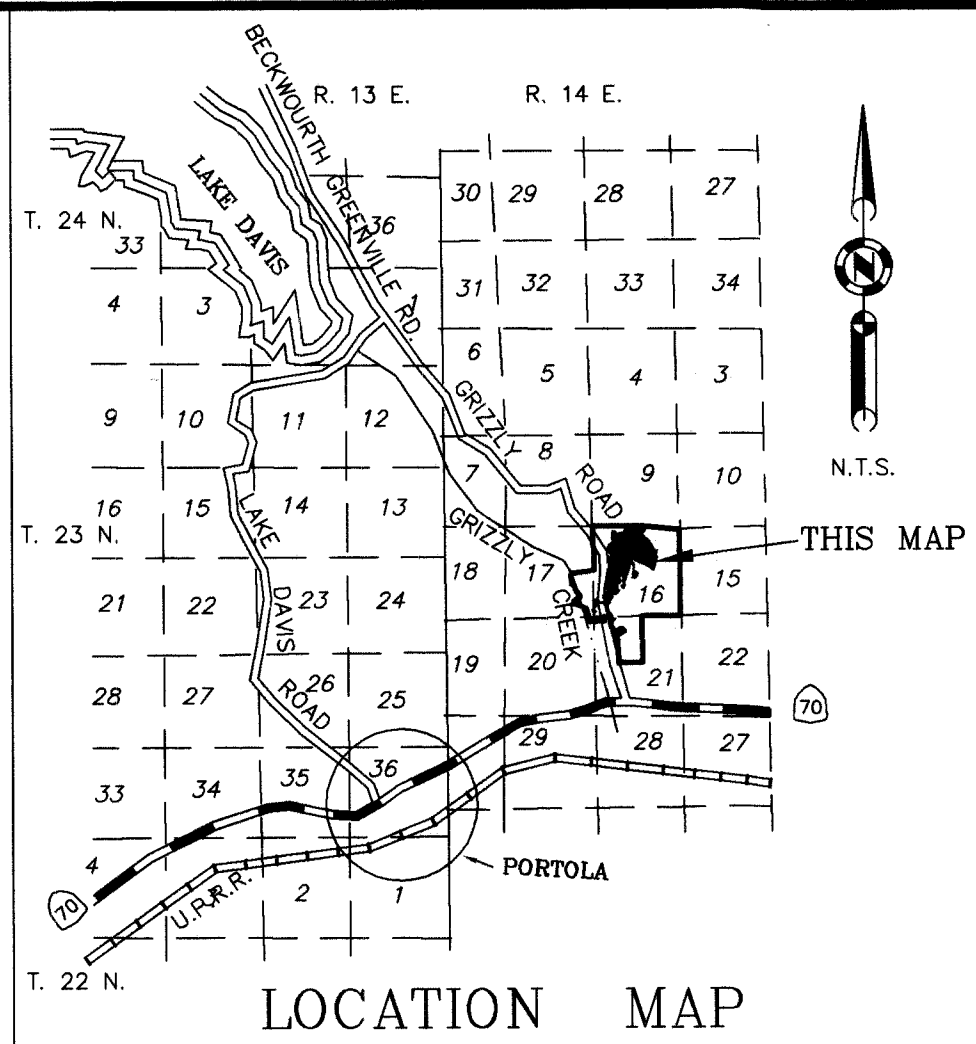
State of CALIFORNIA }
County of PLUMAS }

On NOV. 25, 2003 before me, M. Eschenbaum
personally appeared JOHN TURNER AND MICHAEL A. MOHLER

personally known to me - OR - proved to me on the basis of satisfactory evidence to be the persons whose names are subscribed to the within instrument and acknowledged to me that they executed the same in their authorized capacities, and that by their signatures on the instrument the persons or the entity upon behalf of which the persons acted, executed the instrument.

My Commission expires 3-22-2006 WITNESS my hand and official seal.

M. Eschenbaum
COMMISSION # 1344505



AREA TABULATION

146.90 acres in Lots
25.28 acres in roads
172.18 acres total

COUNTY BOARD CLERK'S CERTIFICATE

I, NANCY DAFORNO, CLERK TO THE PLUMAS COUNTY BOARD OF SUPERVISORS, HEREBY CERTIFY THAT THE HEREIN EMBODIED MAP WAS APPROVED BY SAID BOARD OF SUPERVISORS CONVENED IN A REGULAR MEETING UPON THE DAY OF December, 2003. THE OFFER OF DEDICATION FOR UNDERGROUND PUBLIC UTILITY EASEMENTS AND ACCESS FOR MAINTENANCE AS SHOWN ON THE MAP WERE ACCEPTED FOR THE USES NOTED.

DATED: 12/2/03

Nancy Daforno
NANCY DAFORNO
CLERK TO THE BOARD OF SUPERVISORS

COUNTY RECORDER'S CERTIFICATE

FILED THIS 3rd DAY OF December 2003, AT 3:36 P.M. IN BOOK 9 OF MAPS AT PAGE 88-98 AT THE REQUEST OF THE COUNTY SURVEYOR.

FEE \$28.00

FILE NO. 2003-14464

KATHLEEN WILLIAMS, COUNTY RECORDER

Jelly Wilhinson
DEPUTY

GRIZZLY RANCH, UNIT 1
a Planned Development
For
Grizzly Creek Development, L.L.C.

A portion of the Sections 16, 17 & 21
T. 23 N., R. 14E., M.D.M.

Plumas County ~ California
Scale 1" = 100' February, 2003

Hamby Surveying Inc.
P.O. Box 1209
Portola, CA 96122
(530) 832-5571