

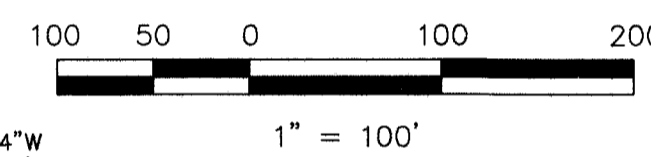
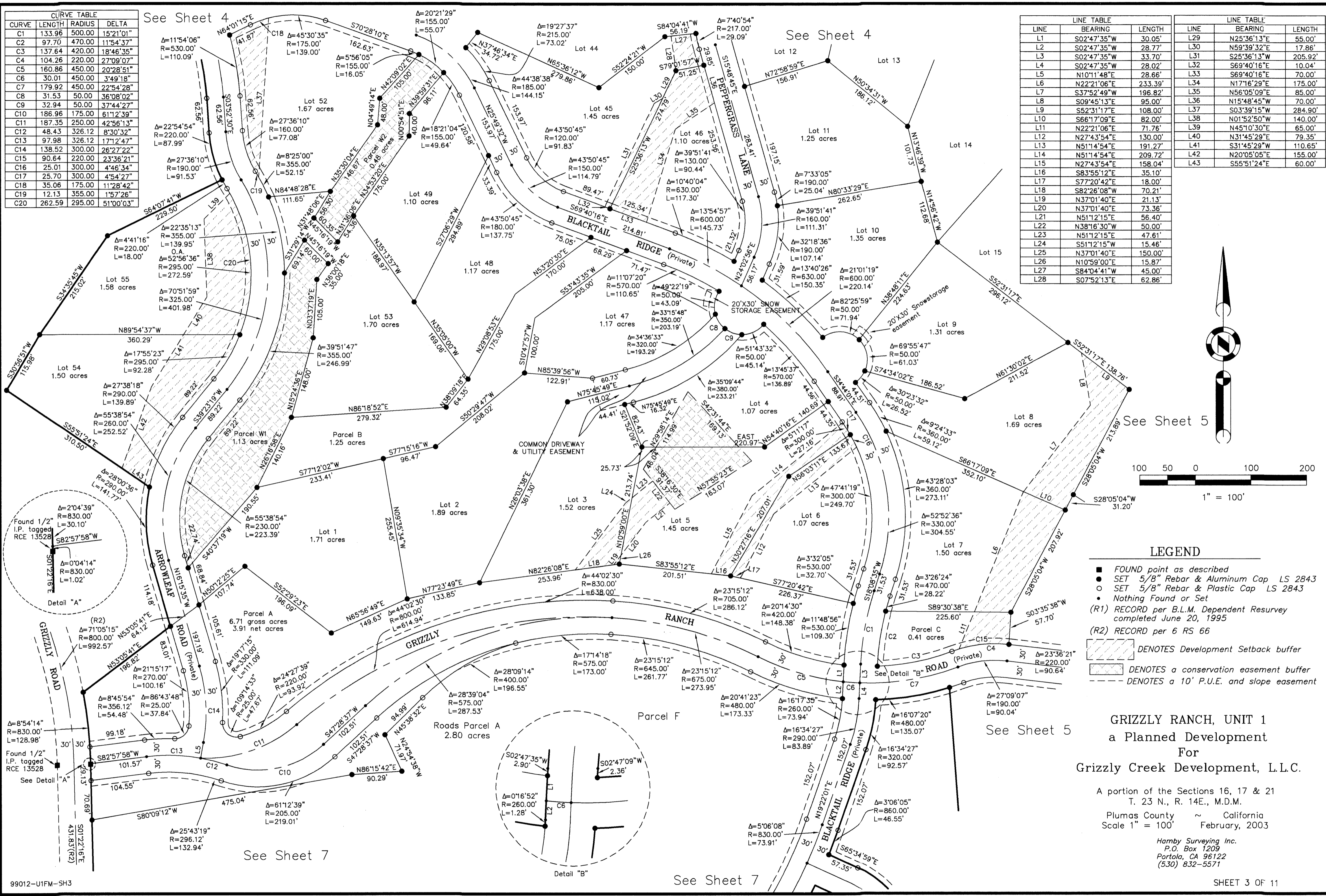
CURVE	LENGTH	RADIUS	DELTA
C1	133.96	500.00	15°21'01"
C2	97.70	470.00	11°54'37"
C3	137.64	420.00	18°46'35"
C4	104.26	220.00	27°09'07"
C5	160.86	450.00	20°28'51"
C6	30.01	450.00	3°49'18"
C7	179.92	450.00	22°54'28"
C8	31.53	50.00	36°08'02"
C9	32.94	50.00	37°44'27"
C10	186.96	175.00	61°12'39"
C11	187.35	250.00	42°56'13"
C12	48.43	326.12	8°30'32"
C13	97.98	326.12	17°12'47"
C14	138.52	300.00	26°27'22"
C15	90.64	220.00	23°36'21"
C16	25.01	300.00	4°54'27"
C17	25.70	300.00	4°54'27"
C18	35.06	175.00	11°28'42"
C19	12.13	355.00	5°17'26"
C20	262.59	295.00	51°00'03"

See Sheet 4

See Sheet 4

LINE	BEARING	LENGTH
L1	S02°47'35"W	30.05'
L2	S02°47'35"W	28.77'
L3	S02°47'35"W	33.70'
L4	S02°47'35"W	28.02'
L5	N10°11'48"E	28.66'
L6	N22°21'06"E	233.39'
L7	S37°52'49"W	196.82'
L8	S09°45'13"E	95.00'
L9	S52°31'17"E	108.00'
L10	S66°17'09"E	82.00'
L11	N22°21'06"E	71.76'
L12	N27°43'54"E	130.00'
L13	N51°14'54"E	191.27'
L14	N51°14'54"E	209.72'
L15	N27°43'54"E	158.04'
L16	S83°55'12"E	35.10'
L17	S77°20'42"E	18.00'
L18	S82°26'08"W	70.21'
L19	N37°01'40"E	21.13'
L20	N37°01'40"E	73.36'
L21	N51°12'15"E	56.40'
L22	N38°16'30"W	50.00'
L23	N51°12'15"E	47.61'
L24	S51°12'15"W	15.46'
L25	N37°01'40"E	150.00'
L26	N10°59'00"E	15.87'
L27	S84°04'41"W	45.00'
L28	S07°52'13"E	62.86'

LINE	BEARING	LENGTH
L29	N25°36'13"E	55.00'
L30	N59°39'32"E	17.86'
L31	S25°36'13"W	205.92'
L32	S69°40'16"E	10.04'
L33	S69°40'16"E	70.00'
L34	N17°16'29"E	175.00'
L35	N56°05'09"E	85.00'
L36	N15°48'45"W	70.00'
L37	S03°39'15"W	284.90'
L38	N01°52'50"W	140.00'
L39	N45°10'30"E	65.00'
L40	N31°45'29"E	79.35'
L41	S31°45'29"W	110.65'
L42	N20°05'05"E	155.00'
L43	S55°51'24"E	60.00'



LEGEND

- FOUND point as described
- SET 5/8" Rebar & Aluminum Cap LS 2843
- SET 5/8" Rebar & Plastic Cap LS 2843
- Nothing Found or Set
- (R1) RECORD per B.L.M. Dependent Resurvey completed June 20, 1995
- (R2) RECORD per 6 RS 66
- ▨ DENOTES Development Setback buffer
- ▩ DENOTES a conservation easement buffer
- - - DENOTES a 10' P.U.E. and slope easement

GRIZZLY RANCH, UNIT 1
a Planned Development
For
Grizzly Creek Development, L.L.C.

A portion of the Sections 16, 17 & 21
T. 23 N., R. 14E., M.D.M.
Plumas County ~ California
Scale 1" = 100' February, 2003

Hamby Surveying Inc.
P.O. Box 1209
Portola, CA 96122
(530) 832-5571