

FINAL MAP

AMERICAN RIDGE

BEING A PORTION OF THE SE 1/4 OF THE SE 1/4 OF SECTION 35, T.25 N., R.9 E., M.D.M.

IN THE UNINCORPORATED TERRITORY OF PLUMAS COUNTY, CALIFORNIA

NEVADA CITY ENGINEERING, INC.
505 COYOTE STREET ~ P.O. BOX 1437 ~ NEVADA CITY ~ CALIFORNIA

PENCE
DOC 2012-0004680

GUTIERREZ
DOC 2012-0007084

SMITH
DOC 2009-0007336

NOTES:

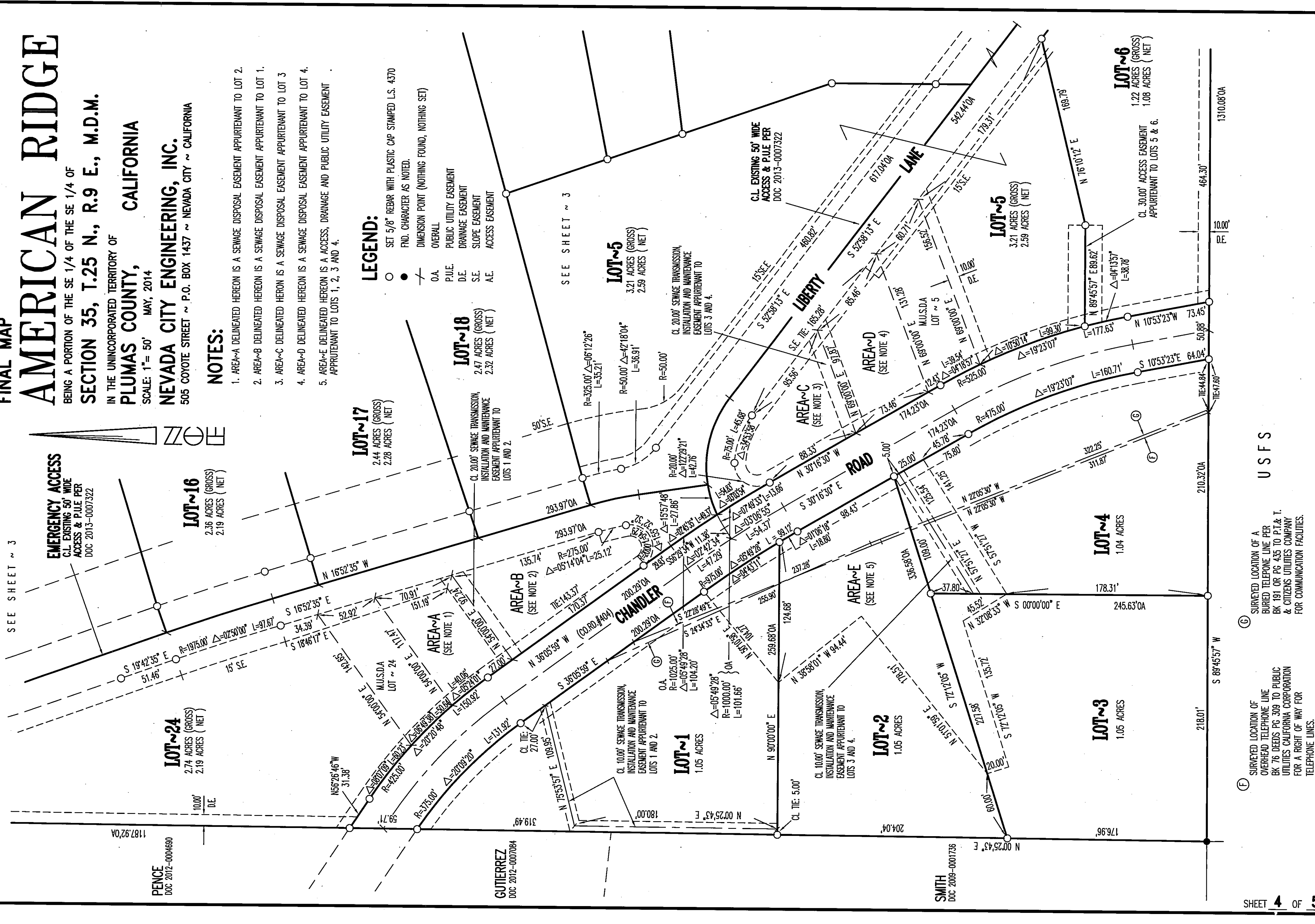
1. AREA-A DELINEATED HEREON IS A SEWAGE DISPOSAL EASEMENT APPURTENANT TO LOT 2.
2. AREA-B DELINEATED HEREON IS A SEWAGE DISPOSAL EASEMENT APPURTENANT TO LOT 1.
3. AREA-C DELINEATED HEREON IS A SEWAGE DISPOSAL EASEMENT APPURTENANT TO LOT 3.
4. AREA-D DELINEATED HEREON IS A SEWAGE DISPOSAL EASEMENT APPURTENANT TO LOT 4.
5. AREA-E DELINEATED HEREON IS A ACCESS, DRAINAGE AND PUBLIC UTILITY EASEMENT APPURTENANT TO LOTS 1, 2, 3 AND 4.

LEGEND:

- SET 5/8" REBAR WITH PLASTIC CAP STAMPED L.S. 4370
- FND. CHARACTER AS NOTED.
- DIMENSION POINT (NOTHING FOUND, NOTHING SET)
- O.A. OVERALL
- P.U.E. PUBLIC UTILITY EASEMENT
- D.E. DRAINAGE EASEMENT
- S.E. SLOPE EASEMENT
- A.E. ACCESS EASEMENT

SEE SHEET ~ 3

SEE SHEET ~ 3



USFS

- (G) SURVEYED LOCATION OF A BURIED TELEPHONE LINE PER BK 191 OR PG 435 TO P.T. & I. & CITIZENS UTILITIES COMPANY FOR COMMUNICATION FACILITIES.
- (F) SURVEYED LOCATION OF OVERHEAD TELEPHONE LINE BK 76 DEEDS PG 309 TO PUBLIC UTILITIES CALIFORNIA CORPORATION FOR A RIGHT OF WAY FOR TELEPHONE LINES.

10 W 133