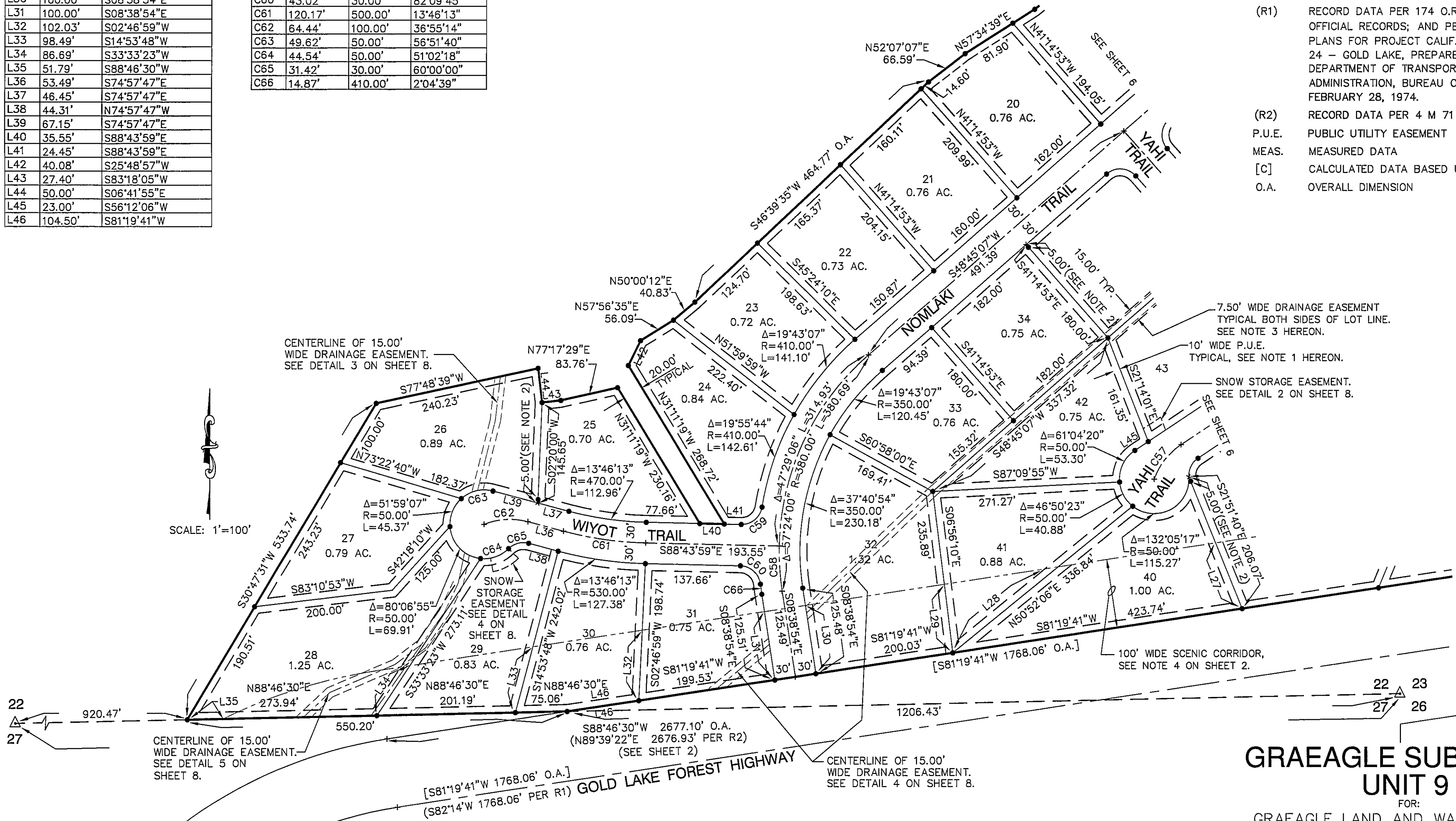


LINE	LENGTH	BEARING
L27	102.71'	S21°51'40"E
L28	197.26'	S50°52'06"W
L29	100.05'	N06°56'10"W
L30	100.00'	S08°38'54"E
L31	100.00'	S08°38'54"E
L32	102.03'	S02°46'59"W
L33	98.49'	S14°53'48"W
L34	86.69'	S33°33'23"W
L35	51.79'	S88°46'30"W
L36	53.49'	S74°57'47"E
L37	46.45'	S74°57'47"E
L38	44.31'	N74°57'47"W
L39	67.15'	S74°57'47"E
L40	35.55'	S88°43'59"E
L41	24.45'	S88°43'59"E
L42	40.08'	S25°48'57"W
L43	27.40'	S83°18'05"W
L44	50.00'	S06°41'55"E
L45	23.00'	S56°12'06"W
L46	104.50'	S81°19'41"W

CURVE	LENGTH	RADIUS	DELTA
C57	64.35'	100.00'	36°52'13"
C58	65.76'	380.00'	9°54'54"
C59	43.02'	30.00'	82°09'45"
C60	43.02'	30.00'	82°09'45"
C61	120.17'	500.00'	13°46'13"
C62	64.44'	100.00'	36°55'14"
C63	49.62'	50.00'	56°51'40"
C64	44.54'	50.00'	51°02'18"
C65	31.42'	30.00'	60°00'00"
C66	14.87'	410.00'	2°04'39"

- LEGEND**
- △ FOUND MONUMENT AS NOTED.
 - SET 1/2" REBAR WITH ALUMINUM CAP STAMPED L.S. 7045
 - + COMPUTED POINT, NOTHING FOUND OR SET.
 - (R1) RECORD DATA PER 174 O.R. 415, PLUMAS COUNTY OFFICIAL RECORDS; AND PER THE "AS CONSTRUCTED PLANS FOR PROJECT CALIF. F.H. 24-1(4) ROUTE NO. 24 - GOLD LAKE, PREPARED BY THE UNITED STATES DEPARTMENT OF TRANSPORTATION, FEDERAL HIGHWAY ADMINISTRATION, BUREAU OF PUBLIC ROADS", DATED FEBRUARY 28, 1974.
 - (R2) RECORD DATA PER 4 M 71
 - P.U.E. PUBLIC UTILITY EASEMENT
 - MEAS. MEASURED DATA
 - [C] CALCULATED DATA BASED UPON RECORD INFORMATION.
 - O.A. OVERALL DIMENSION



- NOTE:**
- A 10' WIDE PUBLIC UTILITY EASEMENT (P.U.E.), UNLESS SHOWN HEREON AS A DIFFERENT WIDTH, SHALL EXIST ON ALL FRONT, SIDE AND BACK LINES OF ALL LOTS SHOWN ON THIS MAP. THESE EASEMENTS ARE HEREBY DEDICATED TO THE SPECIFIC SERVING UTILITY AGENCIES.
 - SET 1/2" REBAR WITH ALUMINUM CAP STAMPED L.S. 7045 WC, FOR A WITNESS CORNER TO THE TRUE LOT CORNER LOCATION.
 - THE 15.00' WIDE DRAINAGE EASEMENTS SHOWN HEREON ARE HEREBY OFFERED FOR DEDICATION TO PLUMAS COUNTY.

**GRAEAGLE SUBDIVISION
UNIT 9**

FOR:
GRAEAGLE LAND AND WATER COMPANY,
A CALIFORNIA CORPORATION
BEING A PORTION OF DOC. 2001-11223
WITHIN PORTIONS OF: SECTIONS 22 AND 23, T. 22 N., R. 12 E., M.D.B.M.
IN THE UNINCORPORATED AREA OF
PLUMAS COUNTY, CALIFORNIA
PREPARED BY:
BASTIAN ENGINEERING
211 POPLAR VALLEY ROAD
BLAIRSDEN, CALIFORNIA 96103
L.S. 7045

10 M 141