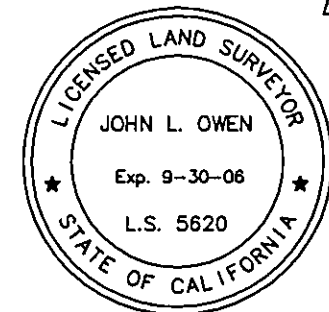


SURVEYOR'S STATEMENT

THIS MAP WAS PREPARED BY ME OR UNDER MY DIRECTION AND IS BASED UPON A FIELD SURVEY IN CONFORMANCE WITH THE REQUIREMENTS OF THE SUBDIVISION MAP ACT AND LOCAL ORDINANCE AT THE REQUEST OF GRIZZLY CREEK DEVELOPMENT, L.L.C. IN FEBRUARY 2005. I HEREBY STATE THAT THIS FINAL MAP SUBSTANTIALLY CONFORMS TO THE CONDITIONALLY APPROVED TENTATIVE MAP. ALL OF THE MONUMENTS SHOWN HEREON ARE OF THE CHARACTER AND OCCUPY THE POSITIONS INDICATED, OR THEY WILL BE SET IN SUCH POSITIONS ON OR BEFORE ONE YEAR AFTER THE RECORDATION OF THIS MAP BY THE PLUMAS COUNTY RECORDER AND THE MONUMENTS ARE SUFFICIENT TO ENABLE THE SURVEY TO BE RETRACED.



DATED: 11-21-05

John L. Owen
JOHN L. OWEN L.S. 5620
LICENSE EXPIRES 9-30-06

COUNTY SURVEYOR'S STATEMENT

I HAVE EXAMINED THIS MAP AND FIND IT IS SUBSTANTIALLY THE SAME AS IT APPEARED ON THE TENTATIVE MAP AND ANY APPROVED ALTERATIONS THEREOF. ALL PROVISIONS OF THE SUBDIVISION MAP ACT AND ANY LOCAL ORDINANCES APPLICABLE AT THE TIME OF APPROVAL OF THE TENTATIVE MAP HAVE BEEN COMPLIED WITH, AND I AM SATISFIED THAT THE MAP IS TECHNICALLY CORRECT.



DATED 3/13/06

R. Tom Hunter
R. TOM HUNTER R.C.E.30515
PLUMAS COUNTY SURVEYOR
LICENSE EXP. DATE 3-31-06

TRUSTEE'S CERTIFICATE

CALIFORNIA BANK AND TRUST, A CALIFORNIA BANKING CORPORATION, AS TRUSTEE UNDER A DEED OF TRUST DATED 12-21-2004, AND RECORDED ON 1-12-2005 AS DOCUMENT NO. 2005-000399 OF OFFICIAL RECORDS, DOES HEREBY CONSENT TO THE PREPARATION AND RECORDING OF THIS MAP AND CONSENTS TO THE DEDICATION FOR UNDERGROUND PUBLIC UTILITY EASEMENTS AND ACCESS FOR MAINTENANCE AS SHOWN.

CALIFORNIA BANK AND TRUST

DATED: 11-23-05

By Alana Troy

State of California
County of Los Angeles

On November 23, 2005 before me, Lourdes Delgado, NOTARY PUBLIC.

personally appeared Marisa Drury

personally known to me - OR - proved to me on the basis of satisfactory evidence to be the persons whose names are subscribed to the within instrument and acknowledged to me that they executed the same in their authorized capacities, and that by their signatures on the instrument the persons or the entity upon behalf of which the persons acted, executed the instrument.

Commission # 1607055

My Commission expires

October 14, 2009

WITNESS my hand and official seal.

Lourdes Delgado

NOTES:

- 1. THIS MAP REPRESENTS A SUBDIVISION OF THE LANDS DESCRIBED IN DOCUMENT 2004-13688, BEING A PORTION OF RESULTING PARCELS 3 AND 5 OF SAID LOT LINE ADJUSTMENT.
- 2. THIS PROPERTY MAY BE ENCUMBERED BY THE FOLLOWING DOCUMENTS OF RECORD
A. PLUMAS-SIERRA RURAL ELECTRIC, 73 DEEDS 71
B. U.S.A., WATER PIPELINE, 342 O.R. 128
C. MAINTENANCE EASEMENTS, DOC. 2003-15286 AND DOC. 2003-14465
D. A DEVELOPMENT AGREEMENT DOC. # 2002-0011167
- 3. A GEOTECHNICAL AND SOILS REPORT FOR THIS SUBDIVISION, PREPARED SEPTEMBER 3, 2003 BY PATRICK PILLING, RGE 2292 IS ON FILE WITH THE PLUMAS COUNTY ENGINEER.

COUNTY TAX COLLECTOR'S CERTIFICATE

I, GINNY DUNBAR, TAX COLLECTOR OF THE COUNTY OF PLUMAS, STATE OF CALIFORNIA, DO HEREBY CERTIFY THAT THERE ARE NO TAX LIENS AGAINST THE LOTS AS SHOWN HEREON FOR UNPAID STATE, COUNTY, MUNICIPAL OR LOCAL TAXES OR SPECIAL ASSESSMENTS COLLECTED AS TAXES, EXCEPT TAXES OR ASSESSMENTS NOT YET PAYABLE. TAXES OR ASSESSMENTS WHICH ARE A LIEN BUT NOT YET PAYABLE ARE ESTIMATED TO BE IN THE AMOUNT OF 33,180.00.

DATED: 3/8/06

Ginny Dunbar by Debra J. Dugan, ASST. TTC.
GINNY DUNBAR
PLUMAS COUNTY TAX COLLECTOR

OWNER'S STATEMENT

GRIZZLY CREEK DEVELOPMENT, L.L.C., HAVING RECORD TITLE INTEREST IN THE HEREIN SUBDIVIDED LANDS, DOES HEREBY CONSENT TO THE PREPARATION AND RECORDATION OF THIS MAP.

"ACORN WAY", "BIG CEDAR LANE", "BUCKS CROSSING", "GRIZZLY RANCH ROAD", "SOUTH RIDGE ROAD", "SPRING MEADOW DRIVE", "STARFLOWER DRIVE", "WHISKER BRUSH WAY", AND THE 10 FOOT P.U.E.'S AS SHOWN ON THE MAP ARE HEREBY OFFERED FOR DEDICATION AS PUBLIC UTILITY EASEMENTS FOR UNDERGROUND UTILITIES, AND AS ACCESS FOR MAINTENANCE OF THOSE UTILITIES.

"ACORN WAY", "BIG CEDAR LANE", "BUCKS CROSSING", "GRIZZLY RANCH ROAD", "SOUTH RIDGE ROAD", "SPRING MEADOW DRIVE", "STARFLOWER DRIVE", "WHISKER BRUSH WAY", SLOPE EASEMENTS, COMMON DRIVEWAY EASEMENTS AND SNOW STORAGE EASEMENTS AS SHOWN ON THE MAP WILL BE GRANTED TO THE GRIZZLY RANCH ASSOCIATION AS PRIVATE ROADS FOR MAINTENANCE AND COMMON USE OF THE OWNERS OF THE GRIZZLY RANCH ASSOCIATION. SAID PRIVATE ROADS WILL BE MAINTAINED BY THE GRIZZLY RANCH ASSOCIATION.

PARCEL "T" AND PARCEL "U" AS SHOWN ON THE MAP WILL BE GRANTED TO THE GRIZZLY RANCH ASSOCIATION FOR THE USE NOTED IN THE PLANNED DEVELOPMENT PERMIT.

GRIZZLY CREEK DEVELOPMENT, L.L.C.
A DELAWARE LIMITED LIABILITY COMPANY

BY: GRIZZLY CREEK MANAGER, L.L.C.
A CALIFORNIA LIMITED LIABILITY COMPANY
ITS MANAGING MEMBER

BY: LDD GRIZZLY CREEK, INC.,
A CALIFORNIA CORPORATION
ITS MANAGER

Michael A. Mohler
MICHAEL A. MOHLER
SENIOR VICE PRESIDENT

George S. Mercado
GEORGE S. MERCADO
VICE PRESIDENT

State of California
County of Plumas

On 4-29-05 before me, M. Eschenbaum, Notary Public

personally appeared Michael A. Mohler and George S. Mercado

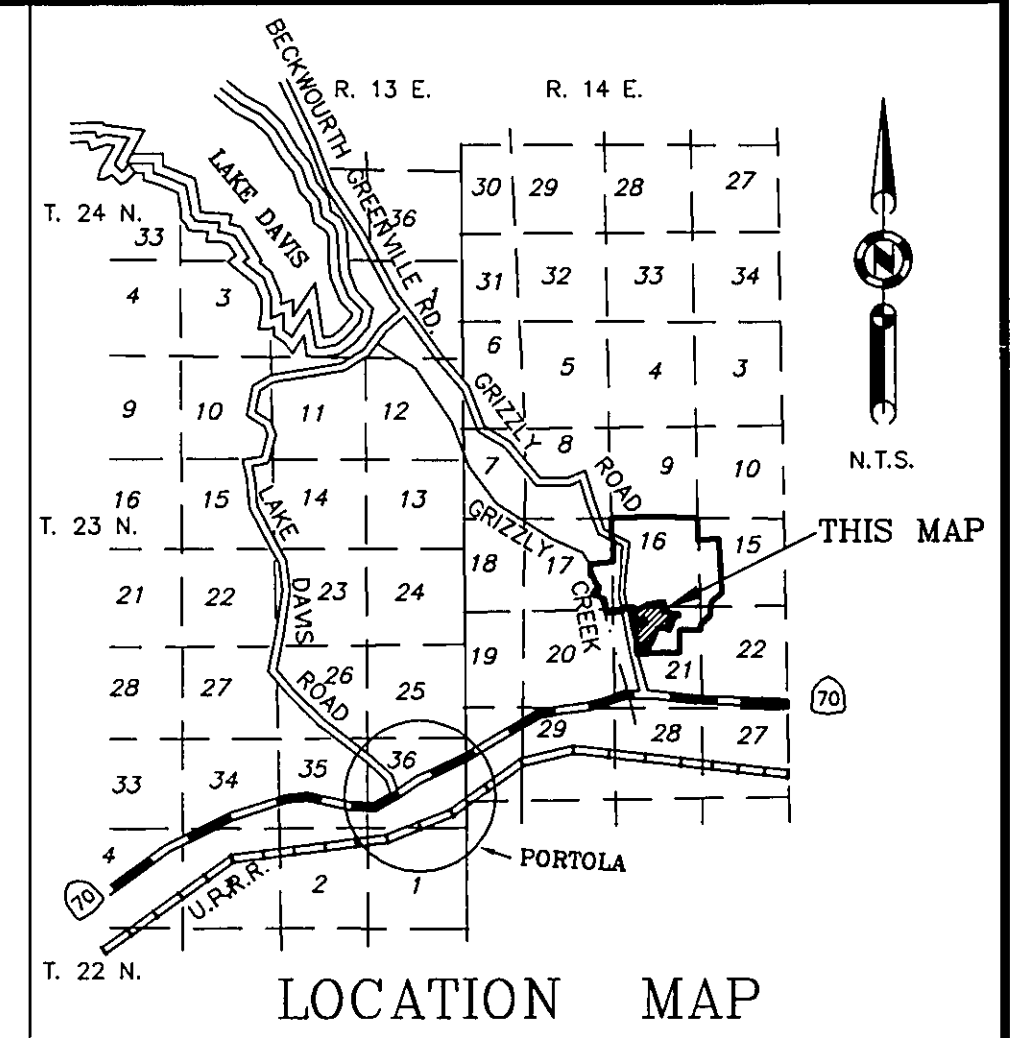
personally known to me - OR - proved to me on the basis of satisfactory evidence to be the persons whose names are subscribed to the within instrument and acknowledged to me that they executed the same in their authorized capacities, and that by their signatures on the instrument the persons or the entity upon behalf of which the persons acted, executed the instrument.

My Commission expires

3-22-06

WITNESS my hand and official seal.

M. Eschenbaum



AREA TABULATION

88.95 acres in Lots
10.80 acres in roads
99.75 acres total

COUNTY BOARD CLERK'S CERTIFICATE

I, NANCY DAFORNO, CLERK TO THE PLUMAS COUNTY BOARD OF SUPERVISORS, HEREBY CERTIFY THAT THE HEREIN EMBODIED MAP WAS APPROVED BY SAID BOARD OF SUPERVISORS CONVENED IN A REGULAR MEETING UPON THE DAY OF March, 2006. THE OFFER OF DEDICATION FOR UNDERGROUND PUBLIC UTILITY EASEMENTS AND ACCESS FOR MAINTENANCE AS SHOWN ON THE MAP WERE ACCEPTED FOR THE USES NOTED.

DATED: 3/14/06

Nancy DaForno
NANCY DAFORNO
CLERK TO THE BOARD OF SUPERVISORS

COUNTY RECORDER'S CERTIFICATE

FILED THIS 15th DAY OF March, 2006, AT 10:28 A.M. IN BOOK 10 OF MAPS AT PAGE 38 - 46 AT THE REQUEST OF THE COUNTY SURVEYOR.

FEE \$24.00

KATHLEEN WILLIAMS, COUNTY RECORDER

DOC. NO. 2006-0002038

By Laura L. Davis
DEPUTY

GRIZZLY RANCH, UNIT 5
a Planned Development
For
Grizzly Creek Development, L.L.C.

A portion of the Sections 16 and 21
T. 23 N., R. 14E., M.D.M.

Plumas County ~ California
Scale 1" = 100' February, 2005

Hamby Surveying Inc.
P.O. Box 1209
Portola, CA 96122
(530) 832-5571