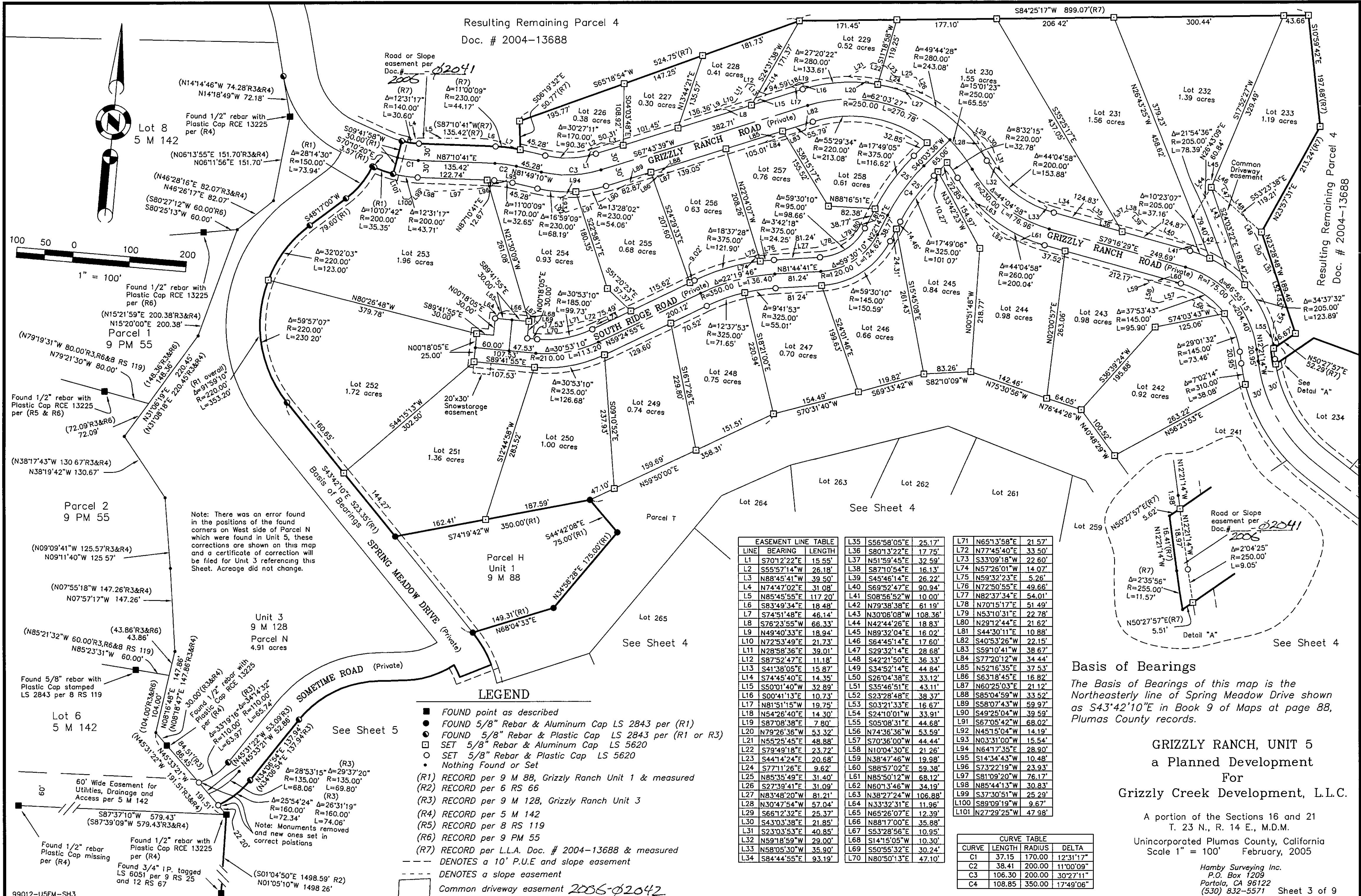


Resulting Remaining Parcel 4
Doc. # 2004-13688



Note: There was an error found in the positions of the found corners on West side of Parcel N which were found in Unit 5, these corrections are shown on this map and a certificate of correction will be filed for Unit 3 referencing this Sheet. Acreage did not change.

LEGEND

- FOUND point as described
- FOUND 5/8" Rebar & Aluminum Cap LS 2843 per (R1)
- FOUND 5/8" Rebar & Plastic Cap LS 2843 per (R1 or R3)
- SET 5/8" Rebar & Aluminum Cap LS 5620
- SET 5/8" Rebar & Plastic Cap LS 5620
- Nothing Found or Set
- (R1) RECORD per 9 M 88, Grizzly Ranch Unit 1 & measured
- (R2) RECORD per 6 RS 66
- (R3) RECORD per 9 M 128, Grizzly Ranch Unit 3
- (R4) RECORD per 5 M 142
- (R5) RECORD per 8 RS 119
- (R6) RECORD per 9 PM 55
- (R7) RECORD per L.L.A. Doc. # 2004-13688 & measured
- DENOTES a 10' P.U.E and slope easement
- - - DENOTES a slope easement
- Common driveway easement 2006-02042

EASEMENT LINE TABLE			
LINE	BEARING	LENGTH	
L1	S70°12'22"E	15.55'	L35 S56°58'05"E 25.17'
L2	S55°57'14"W	26.18'	L36 S80°13'22"E 17.75'
L3	N88°45'41"W	39.50'	L37 N51°59'45"E 32.59'
L4	N74°47'02"E	31.08'	L38 S87°10'54"E 16.13'
L5	N85°45'55"E	117.20'	L39 S45°46'14"E 26.22'
L6	S83°49'34"E	18.48'	L40 S69°52'47"E 90.94'
L7	S74°51'48"E	46.14'	L41 S08°56'52"W 10.00'
L8	S76°23'55"W	66.33'	L42 N79°38'38"E 61.19'
L9	N49°40'33"E	18.94'	L43 N30°06'08"W 108.36'
L10	N72°53'49"E	21.73'	L44 N42°44'26"E 18.83'
L11	N28°58'36"E	39.01'	L45 N89°32'04"E 16.02'
L12	S87°52'47"E	11.18'	L46 S64°45'14"E 17.60'
L13	S41°38'05"E	15.87'	L47 S29°32'14"E 28.68'
L14	S74°45'40"E	14.35'	L48 S42°21'50"E 36.33'
L15	S50°01'40"W	32.89'	L49 S34°52'14"E 44.84'
L16	S00°41'13"E	10.73'	L50 S26°04'38"E 33.12'
L17	N81°51'15"W	19.75'	L51 S35°46'51"E 43.11'
L18	N54°26'40"E	14.30'	L52 S23°28'48"E 38.37'
L19	S87°08'38"E	7.80'	L53 S03°21'33"E 16.67'
L20	N79°26'36"W	53.32'	L54 S24°10'01"W 33.91'
L21	N55°25'45"E	48.88'	L55 S05°08'31"E 44.68'
L22	S79°49'18"E	23.72'	L56 N74°36'36"W 53.59'
L23	S44°14'24"E	20.68'	L57 S70°36'00"W 44.44'
L24	S77°11'26"E	9.62'	L58 N10°04'30"E 21.26'
L25	N85°35'49"E	31.40'	L59 N38°47'46"W 19.98'
L26	S27°39'41"E	31.09'	L60 S88°57'02"E 59.38'
L27	N83°48'20"W	81.21'	L61 N85°50'12"W 68.12'
L28	N30°47'54"W	57.04'	L62 N60°13'46"W 34.19'
L29	S66°12'32"E	25.37'	L63 N38°27'24"W 106.88'
L30	S43°03'38"E	21.85'	L64 N33°32'31"E 11.96'
L31	S23°03'53"E	40.85'	L65 N65°26'07"E 12.39'
L32	N59°18'59"W	29.00'	L66 N88°17'00"E 35.88'
L33	N58°05'30"W	35.90'	L67 S53°28'56"E 10.95'
L34	S84°44'55"E	93.19'	L68 S14°15'05"W 10.30'
			L69 S50°55'32"E 30.24'
			L70 N80°50'13"E 47.10'

CURVE TABLE			
CURVE	LENGTH	RADIUS	DELTA
C1	37.15	170.00	12°31'17"
C2	38.41	200.00	11°00'09"
C3	106.30	200.00	30°27'11"
C4	108.85	350.00	17°49'06"

Basis of Bearings
The Basis of Bearings of this map is the Northeastly line of Spring Meadow Drive shown as S43°42'10"E in Book 9 of Maps at page 88, Plumas County records.

GRIZZLY RANCH, UNIT 5
a Planned Development
For
Grizzly Creek Development, L.L.C.

A portion of the Sections 16 and 21
T. 23 N., R. 14 E., M.D.M.
Unincorporated Plumas County, California
Scale 1" = 100' February, 2005

Hamby Surveying Inc.
P.O. Box 1209
Portola, CA 96122
(530) 832-5571 Sheet 3 of 9