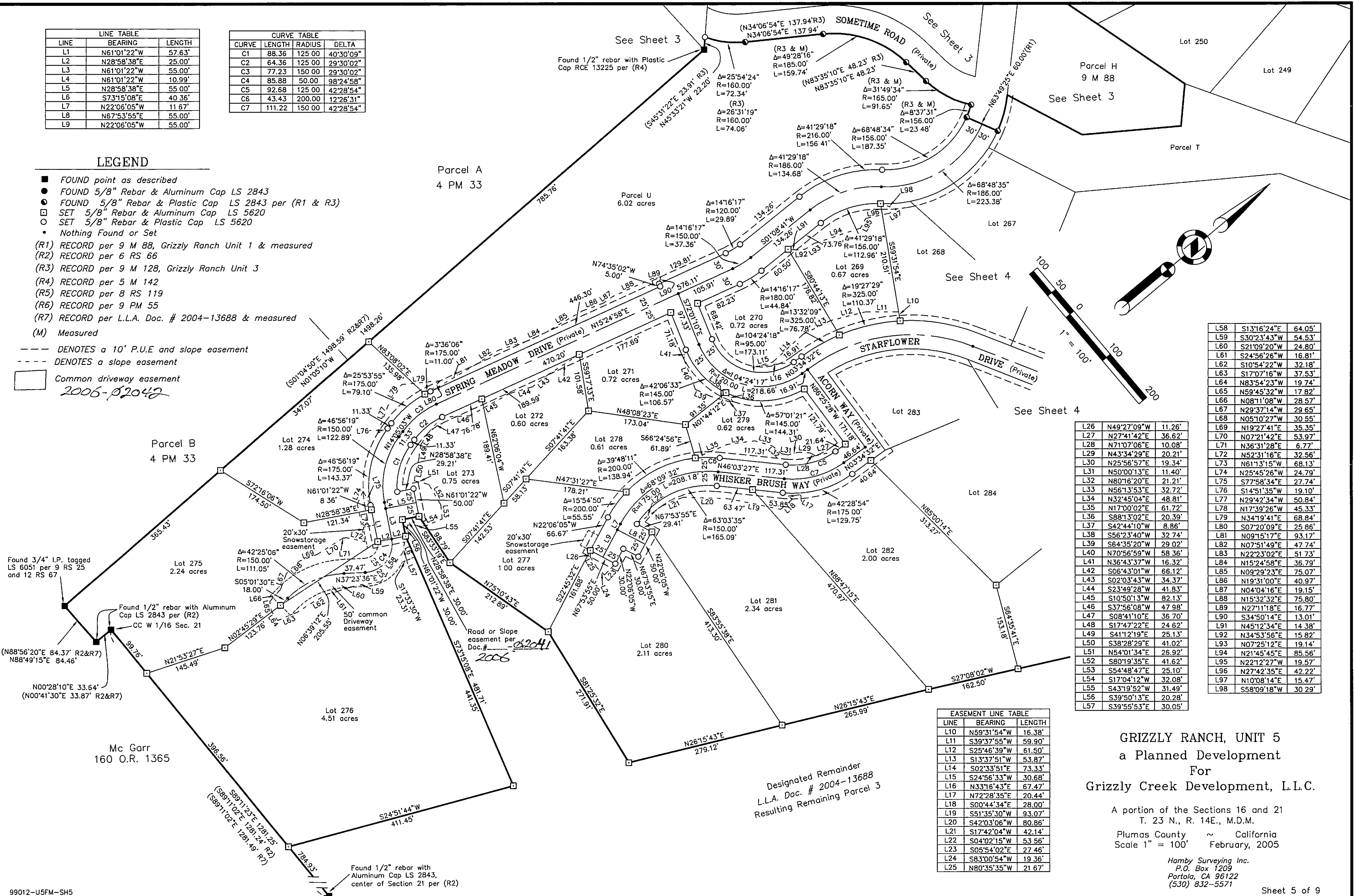


LINE	BEARING	LENGTH
L1	N61°01'22"W	57.63'
L2	N28°58'38"E	25.00'
L3	N61°01'22"W	55.00'
L4	N61°01'22"W	10.99'
L5	N28°58'38"E	55.00'
L6	S73°15'08"E	40.36'
L7	N22°06'05"W	11.67'
L8	N67°53'55"E	55.00'
L9	N22°06'05"W	55.00'

CURVE	LENGTH	RADIUS	DELTA
C1	88.36	125.00	40°30'09"
C2	64.36	125.00	29°30'02"
C3	77.23	150.00	29°30'02"
C4	85.88	50.00	98°24'58"
C5	92.68	125.00	42°28'54"
C6	43.43	200.00	12°26'31"
C7	111.22	150.00	42°28'54"

**LEGEND**

- FOUND point as described
- FOUND 5/8" Rebar & Aluminum Cap LS 2843
- FOUND 5/8" Rebar & Plastic Cap LS 2843 per (R1 & R3)
- SET 5/8" Rebar & Aluminum Cap LS 5620
- SET 5/8" Rebar & Plastic Cap LS 5620
- Nothing Found or Set
- (R1) RECORD per 9 M 88, Grizzly Ranch Unit 1 & measured
- (R2) RECORD per 6 RS 66
- (R3) RECORD per 9 M 128, Grizzly Ranch Unit 3
- (R4) RECORD per 5 M 142
- (R5) RECORD per 8 RS 119
- (R6) RECORD per 9 PM 55
- (R7) RECORD per L.L.A. Doc. # 2004-13688 & measured
- (M) Measured
- - - DENOTES a 10' P.U.E and slope easement
- - - DENOTES a slope easement
- Common driveway easement



L58	S13°16'24"E	64.05'
L59	S30°23'43"W	54.53'
L60	S21°09'20"W	24.80'
L61	S24°56'26"W	16.81'
L62	S10°54'22"W	32.18'
L63	S17°07'16"W	37.53'
L64	N83°54'23"W	19.74'
L65	N59°45'32"W	17.82'
L66	N08°11'08"W	28.57'
L67	N29°37'14"W	29.65'
L68	N05°10'27"W	30.55'
L69	N19°27'41"E	35.35'
L70	N07°21'42"E	53.97'
L71	N36°31'28"E	6.77'
L72	N52°31'16"E	32.56'
L73	N61°31'15"W	68.13'
L74	N25°45'26"W	24.79'
L75	S77°58'34"E	27.74'
L76	S14°51'35"W	19.10'
L77	N29°42'34"W	50.84'
L78	N17°39'26"W	45.33'
L79	N34°19'41"E	68.84'
L80	S07°20'09"E	25.86'
L81	N09°15'17"E	93.17'
L82	N07°51'49"E	47.74'
L83	N22°23'02"E	51.73'
L84	N15°24'58"E	36.79'
L85	N09°29'23"E	75.07'
L86	N19°31'00"E	40.97'
L87	N04°04'16"E	19.15'
L88	N15°32'32"E	75.80'
L89	N27°11'18"E	16.77'
L90	S34°50'14"E	13.01'
L91	N45°12'34"E	14.38'
L92	N34°53'56"E	15.82'
L93	N07°25'12"E	19.14'
L94	N21°45'45"E	85.56'
L95	N22°12'27"W	19.57'
L96	N27°42'35"E	42.22'
L97	N10°08'14"E	15.47'
L98	S58°09'18"W	30.29'

L26	N49°27'09"W	11.26'
L27	N27°41'42"E	36.62'
L28	N71°07'06"E	10.08'
L29	N43°34'29"E	20.21'
L30	N25°56'57"E	19.34'
L31	N50°00'13"E	11.40'
L32	N80°16'20"E	21.21'
L33	N56°13'53"E	32.72'
L34	N32°45'04"E	48.81'
L35	N17°00'02"E	61.72'
L36	S88°13'02"E	20.39'
L37	S42°44'10"W	8.86'
L38	S56°23'40"W	32.74'
L39	S64°35'20"W	29.02'
L40	N70°56'59"W	58.36'
L41	N36°43'37"W	16.32'
L42	S06°43'01"W	66.12'
L43	S02°03'43"W	34.37'
L44	S23°49'28"W	41.83'
L45	S10°50'13"W	82.13'
L46	S37°56'08"W	47.98'
L47	S08°41'10"E	36.70'
L48	S17°47'22"E	24.62'
L49	S41°12'19"E	25.13'
L50	S38°28'29"E	41.02'
L51	N54°01'34"E	26.92'
L52	S80°19'35"E	41.62'
L53	S54°48'47"E	25.10'
L54	S17°04'12"W	32.08'
L55	S43°19'52"W	31.49'
L56	S39°50'13"E	20.28'
L57	S39°55'53"E	30.05'

LINE	BEARING	LENGTH
L10	N59°31'54"W	16.38'
L11	S39°37'55"W	59.90'
L12	S25°46'39"W	61.50'
L13	S13°37'51"W	53.87'
L14	S02°33'51"E	73.33'
L15	S24°56'33"W	30.68'
L16	N33°16'43"E	67.47'
L17	N72°28'35"E	20.44'
L18	S00°44'34"E	28.00'
L19	S51°35'30"W	93.07'
L20	S42°03'06"W	80.86'
L21	S17°42'04"W	42.14'
L22	S04°02'15"W	53.56'
L23	S05°54'02"E	27.46'
L24	S83°00'54"W	19.36'
L25	N80°35'35"W	21.67'

**GRIZZLY RANCH, UNIT 5**  
a Planned Development  
For  
Grizzly Creek Development, L.L.C.

A portion of the Sections 16 and 21  
T. 23 N., R. 14E., M.D.M.

Plumas County ~ California  
Scale 1" = 100' February, 2005

Hamby Surveying Inc.  
P.O. Box 1209  
Portola, CA 96122  
(530) 832-5571