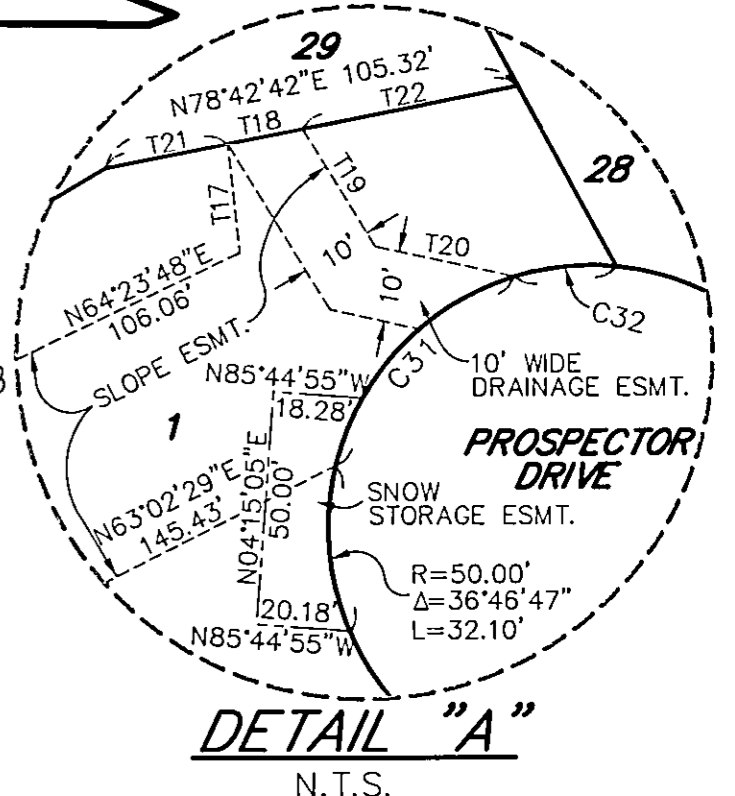
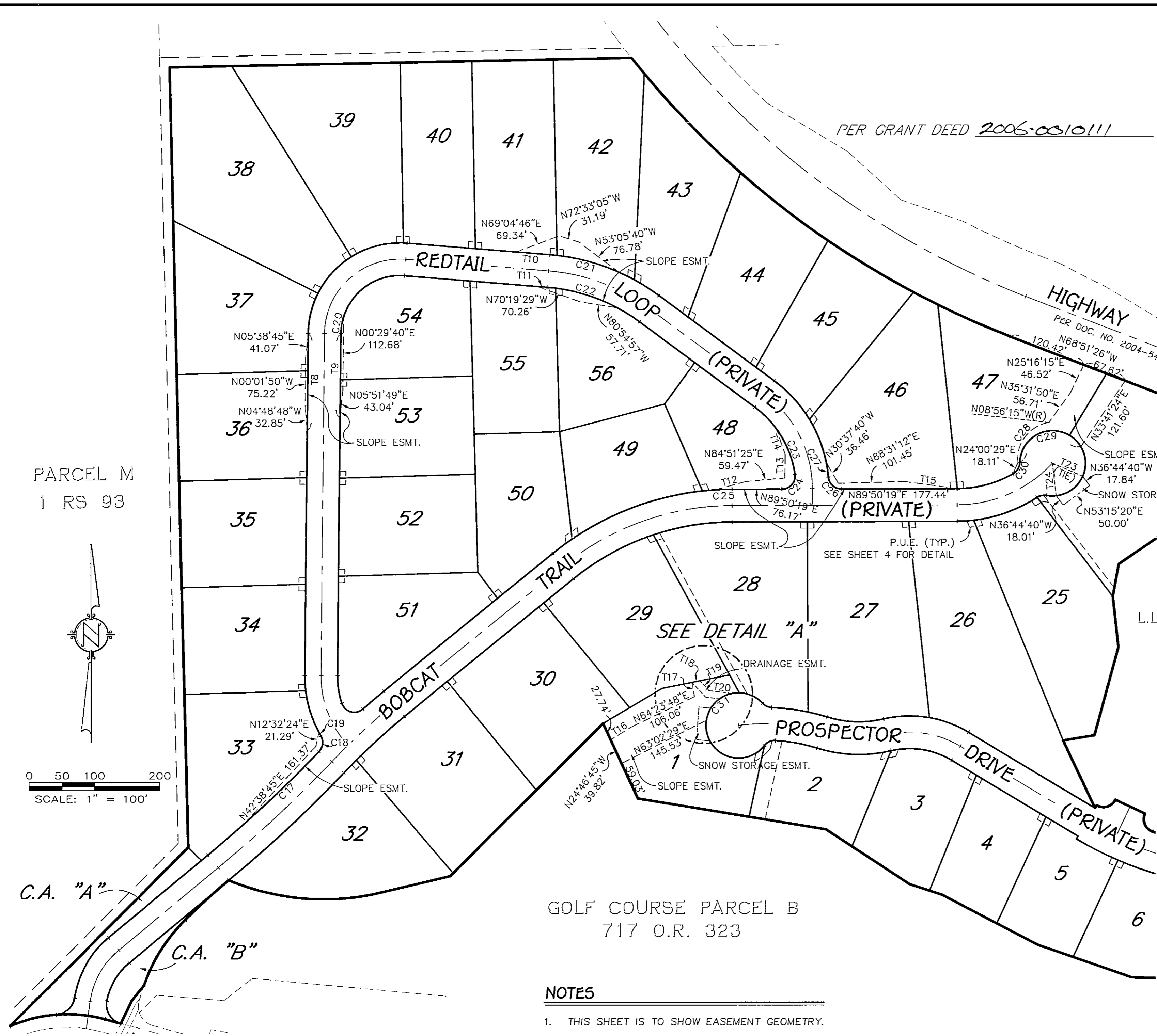
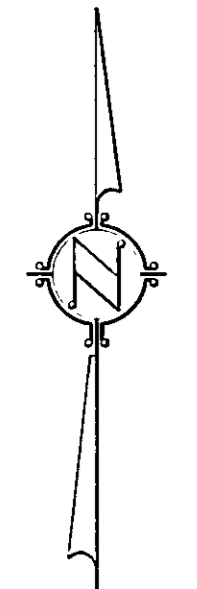


LINE TABLE			CURVE TABLE			
LINE	BEARING	DISTANCE	CURVE	RADIUS	DELTA	LENGTH
T1	N80°34'35"E	48.29'	C1	20.00'	95°44'21"	33.42'
T2	N31°07'35"E(R)	5.00'	C2	470.00'	03°59'00"	32.68'
T3	N08°17'05"E(R)	42.07'	C3	220.00'	12°42'24"	48.79'
T4	N08°17'05"E(R)	22.07'	C4	30.00'	76°43'04"	40.17'
T5	N08°17'05"E(R)	20.00'	C5	130.00'	18°41'55"	42.43'
T6	N25°23'14"E(R)	52.26'	C6	20.00'	113°20'57"	39.57'
T7	N00°09'41"W	26.34'	C7	1050.00'	02°18'09"	42.20'
T8	N00°28'43"E	148.83'	C8	20.00'	59°18'42"	20.70'
T9	N00°28'43"E	128.77'	C9	20.00'	43°23'30"	15.15'
T10	N85°23'44"W	50.98'	C10	30.00'	85°35'16"	44.81'
T11	N85°23'44"W	15.80'	C11	220.00'	06°55'54"	26.62'
T12	N74°44'28"E	48.84'	C12	20.00'	55°53'41"	19.51'
T13	N00°51'21"E	35.72'	C13	20.00'	45°18'40"	15.82'
T14	N18°50'29"W	41.79'	C14	320.00'	15°15'21"	85.20'
T15	N82°18'31"E	81.23'	C15	1025.00'	07°16'55"	130.27'
T16	N58°22'38"E	38.41'	C16	1025.00'	01°57'38"	35.07'
T17	N09°51'00"W	22.34'	C17	1950.00'	04°40'07"	158.89'
T18	N78°42'42"E	12.37'	C18	20.00'	73°44'05"	25.74'
T19	N42°51'36"W	20.55'	C19	180.00'	01°49'40"	5.74'
T20	N83°12'58"W	35.54'	C20	90.00'	17°17'49"	27.17'
T21	N78°42'42"E	46.76'	C21	325.00'	19°12'11"	108.93'
T22	N78°42'42"E	46.19'	C22	275.00'	23°29'00"	112.71'
T23	N66°33'13"W(R)	50.00'	C23	155.00'	28°02'47"	75.87'
T24	N10°18'33"E(R)	50.00'	C24	20.00'	97°56'49"	34.19'
			C25	435.00'	03°23'49"	25.79'
			C26	20.00'	85°14'30"	29.75'
			C27	205.00'	06°10'05"	22.07'
			C28	56.63'	87°09'20"	86.14'
			C29	50.00'	148°30'04"	129.59'
			C30	20.00'	59°18'42"	20.70'
			C31	50.00'	69°45'34"	60.88'
			C32	50.00'	12°30'14"	10.91'



PARCEL M
1 RS 93



0 50 100 200
SCALE: 1" = 100'

GOLF COURSE PARCEL B
717 O.R. 323

NOTES
1. THIS SHEET IS TO SHOW EASEMENT GEOMETRY.

DESIGNATED REMAINDER
A PORTION OF
L.L.A. 2004-0013713

OFFICIAL PLAT OF
WHITEHAWK RANCH
PHASE VIII, UNIT 2
A PLANNED DEVELOPMENT
FOR ASPEN DEVELOPMENT GROUP, INC.
SITUATE WITHIN SECTIONS 31 & 32
TOWNSHIP 22 NORTH, RANGE 13 EAST, MOUNT DIABLO MERIDIAN.
PLUMAS COUNTY CALIFORNIA
OCTOBER 2006

PLACES - Consulting Services Incorporated
Planners • Landscape Architects • Civil Engineers • Surveyors
1360 Greg Street, Suite 210 Sparks, Nevada 89431-6070 phone (775) 355-7721 facsimile (775) 355-7755
21717-01
Sheet 6 of 7