

Found Bearing Trees per (R3)
 8" Ponderosa Pine w/BT tag blazed & scribed N44 3/4"E, 21.3'
 8" Cedar w/BT tag blazed & scribed N48 1/4"W, 16.0'
 Found 3 1/4" USFS Aluminum Cap in mound of stone stamped as shown per (R3)

W1/16
 C
 S29
 LS 4753
 2003

Found Bearing Trees per (R3)
 10" Ponderosa Pine w/BT tag blazed & scribed N30 1/2"E, 19.9'
 10" Ponderosa Pine w/BT tag blazed & scribed S64 1/4"E, 23.4'

Found 3 1/4" USFS Aluminum Cap stamped as shown per (R3)

S1/16 | S29
 C
 LS 4753
 2003

Found BLM Brass Cap in mound of stone stamped as shown per (R3)
 T22N R13E
 1/4
 S30|S29
 1975

Found Bearing Trees per (R3)
 12" Juniper w/BT tag blazed & scribed N77"W, 16.5'
 14" Juniper w/BT tag blazed West, 13.2'

Basis of Bearings
 (S00°22'00"W 2655.88' R1 & R6)
 (S00°22'00"W)

NW 1/4 of the SW 1/4 of Section 29
 SW 1/4 of the SW 1/4 of Section 29

SW 1/16 Corner Section 29
 26" pine with Bearing Tree tag bears S64°11'E, 33.2'

S00°20'44"W
 1337.90'

S00°20'44"W
 1337.90'

S00°20'44"W
 1337.90'

S00°20'44"W
 1337.90'

S00°20'44"W
 1337.90'

S00°20'44"W
 1337.90'

S00°20'44"W
 1337.90'

S00°20'44"W
 1337.90'

S00°20'44"W
 1337.90'

S00°20'44"W
 1337.90'

S00°20'44"W
 1337.90'

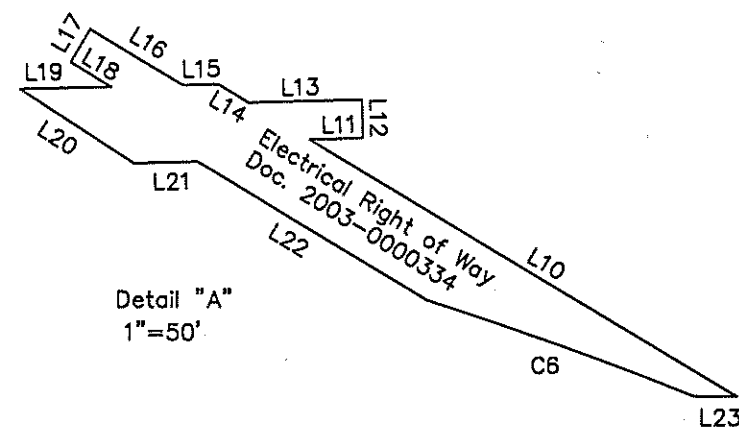
S00°20'44"W
 1337.90'

S00°20'44"W
 1337.90'

S00°20'44"W
 1337.90'

Basis of Bearings

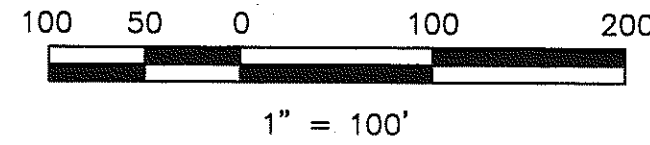
The Basis of Bearings of this map is the East line of the SE 1/4 of section 30 shown as N0°22'00"E in Book 7 of Record of Surveys at page 81



Detail "A"
 1"=50'

LINE	BEARING	LENGTH
L1	N89°54'22"E	52.36'
L2	S78°07'41"E	40.58'
L3	S00°05'44"E	28.47'
L4	S00°05'44"E	15.44'
L5	S38°08'19"E	5.00'
L6	S38°08'19"E	10.00'
L7	N51°51'41"E	36.33'
L8	N51°51'41"E	32.81'
L9	N51°51'41"E	40.58'
L10	N59°11'57"W	129.54'
L11	N88°16'39"E	13.77'
L12	N01°43'21"W	10.00'
L13	S88°16'39"W	29.46'
L14	N59°11'57"W	9.30'
L15	S88°16'39"W	9.30'
L16	N59°11'57"W	28.11'
L17	S30°48'03"W	10.00'
L18	S59°11'57"E	12.42'
L19	S88°16'39"W	23.82'
L20	S57°27'39"E	35.53'
L21	N88°16'39"E	16.52'
L22	S59°11'57"E	70.02'
L23	S89°54'52"E	11.23'
L24	N17°55'13"W	25.00'
L25	N70°06'22"E	30.00'
L26	N17°54'55"W	25.00'

CURVE	LENGTH	RADIUS	DELTA
C1	131.95	335.00	22°34'03"
C2	34.77	984.38	2°01'26"
C3	20.00	984.38	1°09'51"
C4	20.00	984.38	1°09'51"
C5	39.22	984.38	2°16'59"
C6	73.35	984.38	4°16'10"
C7	30.02	260.00	6°36'55"



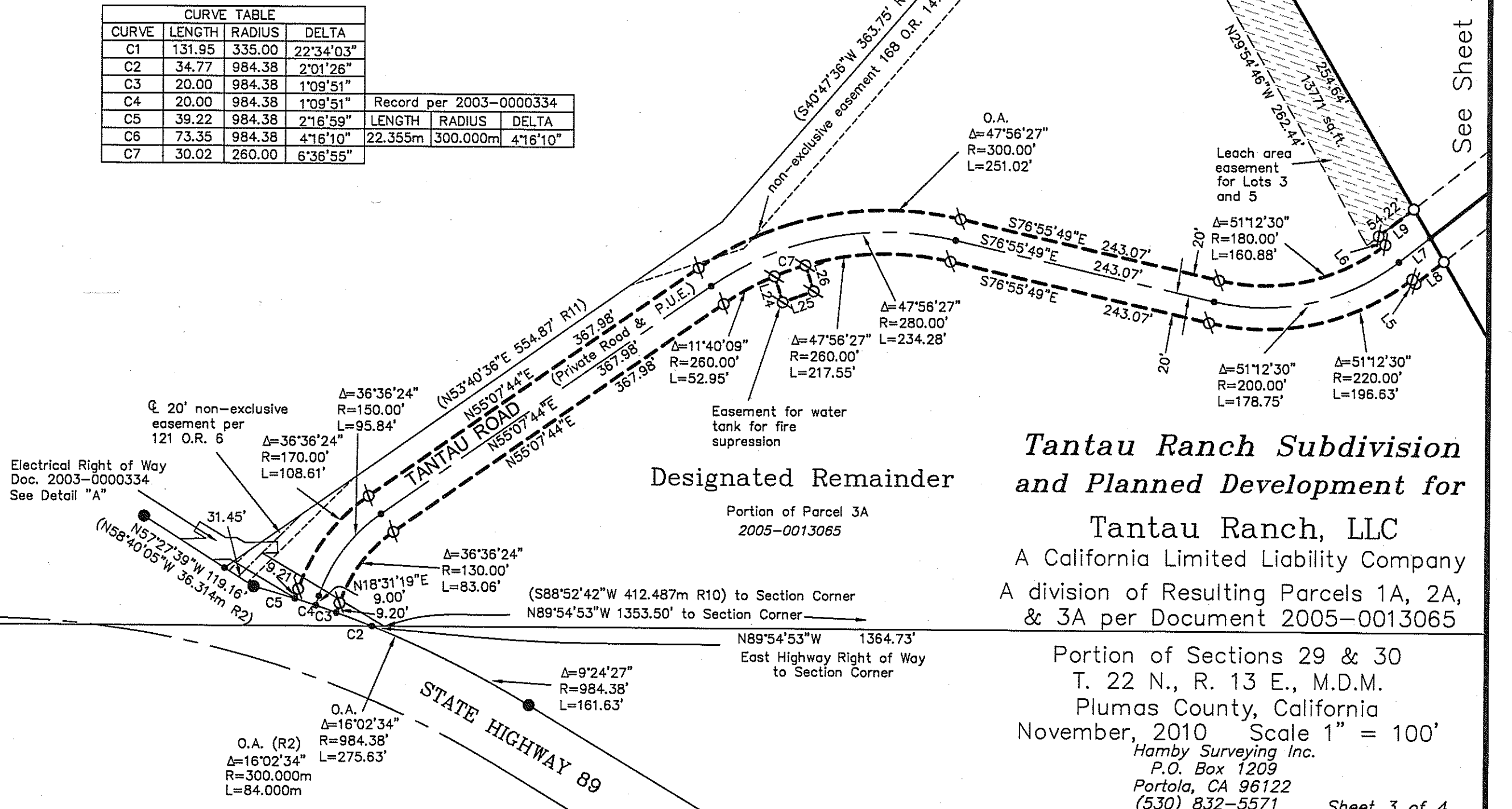
Designated Remainder

M.S. 3578B
 Portion of Parcel 1A
 2005-0013065

Found Mound of Rock Post missing per (R9)

LOT 1
 4.00 gross acres
 3.59 net acres

See Sheet 2



LEGEND

- FOUND point as described
- FOUND 3/4" rebar with Aluminum Cap stamped Caltrans per (R2)
- SET 5/8" rebar with Aluminum Cap LS 5620
- ⊗ SET 5/8" rebar with Plastic Cap LS 5620
- Nothing found or set
- (R1) RECORD per 7 RS 81
- (R2) RECORD per 15 RS 6
- (R3) RECORD per 13 RS 31
- (R4) RECORD per 8 RS 92
- (R5) RECORD per 11 PM 18
- (R6) RECORD per 10 RS 69
- (R7) RECORD per 1 RS 93
- (R8) RECORD per 6 RS 91
- (R9) RECORD Mineral Survey Plat No. 3578AB
- (R10) Doc. 2003-0000334
- (R11) Doc. 2005-0013065
- m meters
- O.A. Overall length

Tantau Ranch Subdivision and Planned Development for Tantau Ranch, LLC
 A California Limited Liability Company
 A division of Resulting Parcels 1A, 2A, & 3A per Document 2005-0013065

Portion of Sections 29 & 30
 T. 22 N., R. 13 E., M.D.M.
 Plumas County, California
 November, 2010 Scale 1" = 100'
 Hamby Surveying Inc.
 P.O. Box 1209
 Portola, CA 96122
 (530) 832-5571