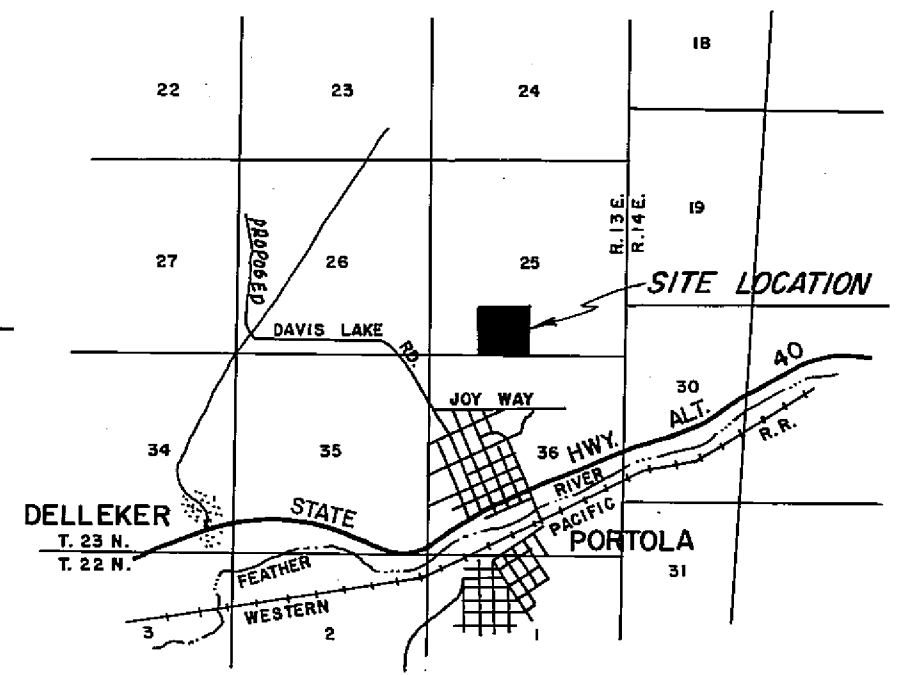
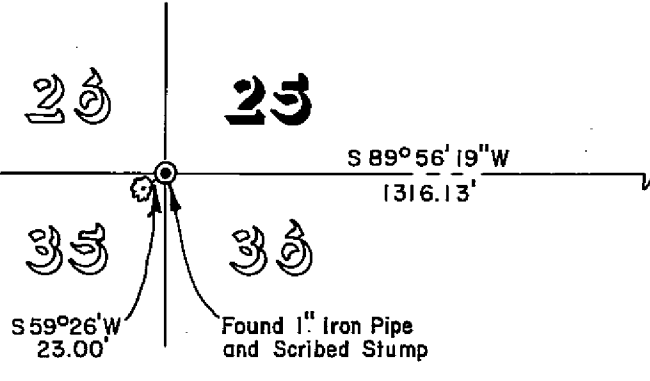
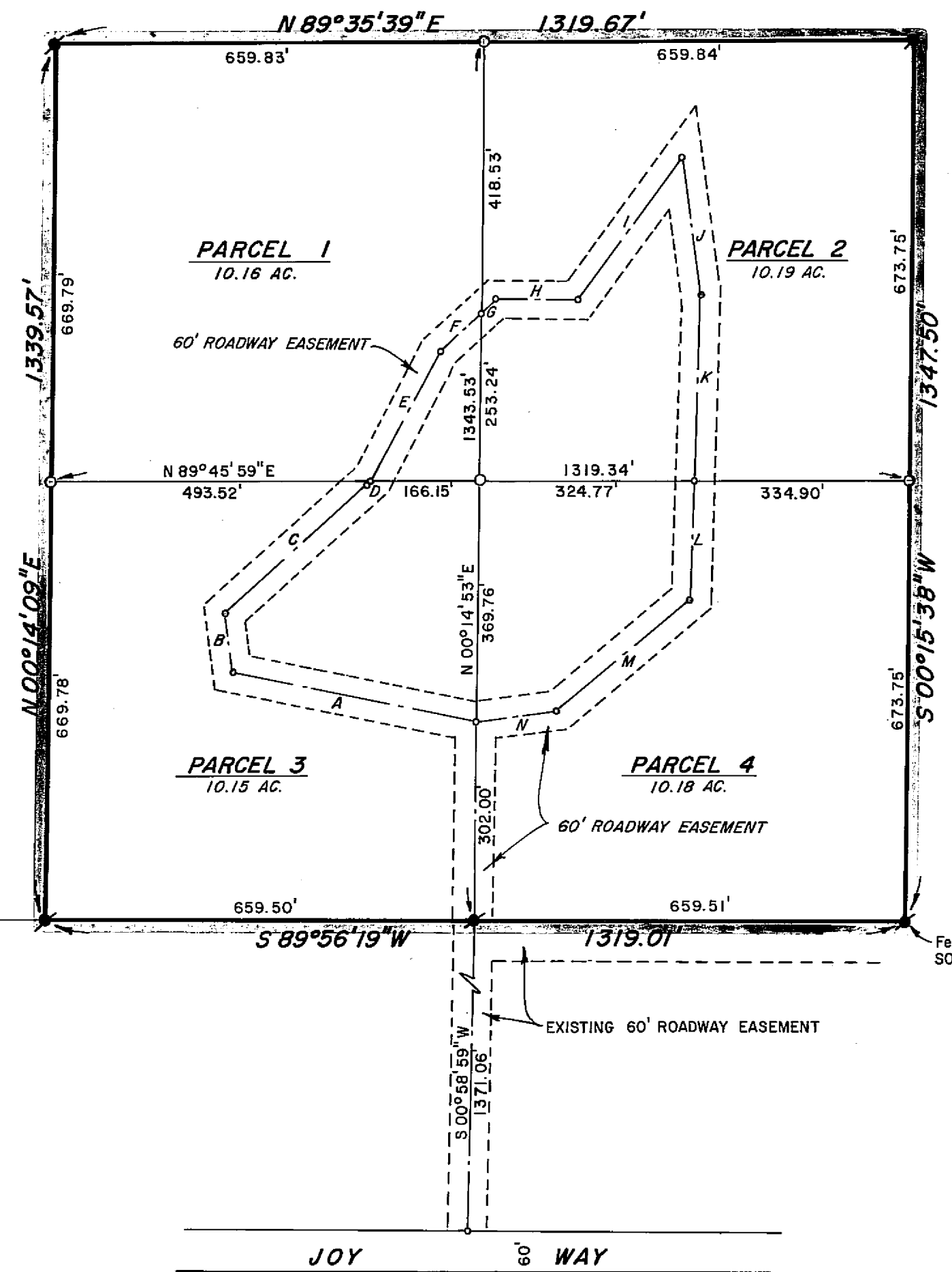


60' ROADWAY EASEMENT

"A"	N 78°58'44"W	383.65'
"B"	N 07°52'27"W	88.13'
"C"	N 47°24'33"E	300.84'
"D"	N 28°27'39"E	5.51'
"E"	N 28°27'39"E	219.89'
"F"	N 45°51'41"E	87.02'
"G"	N 45°51'41"E	28.60'
"H"	S 89°22'05"E	124.32'
"I"	N 35°00'00"E	271.03'
"J"	S 07°42'10"E	210.20'
"K"	S 01°45'38"W	281.54'
"L"	S 01°45'38"W	186.40'
"M"	S 50°07'28"W	262.37'
"N"	S 82°05'29"W	120.44'



LOCATION MAP
SCALE: 1" = 1 Mile

RECORDER'S CERTIFICATE

FILED FOR RECORD THIS 30th DAY OF November, 1967,
AT 4:40 P.M. IN BOOK 2 OF PARCEL MAPS AT PAGE 5 AT
THE REQUEST OF WALTER B. GRIMES. RECORDING NO. 2455

FEE 5.00

Eda Hoagland Grimes
COUNTY RECORDER

BY *Richard*
DEPUTY

COUNTY ENGINEER'S CERTIFICATE

THIS MAP HAS BEEN EXAMINED FOR CONFORMANCE WITH THE REQUIREMENTS
OF SECTION 11575 OF THE SUBDIVISION MAP ACT THIS 29th DAY OF
NOVEMBER, 1967.

Lawrence J. Brock
LAWRENCE J. BROCK, P.E. 13528

NOTES

THE BASIS OF BEARING IS THE SOUTH LINE OF THE S.W. 1/4 OF SECTION 25,
T.23N., R.13E., M.D.B.&M., GIVEN AS S 89°56'19"W ON THAT CERTAIN RECORD
OF SURVEY MAP FILED MAY 31, 1967, IN BOOK 3 OF RECORD OF SURVEYS AT
PAGE 88, RECORDING NO. 3890, IN THE OFFICIAL RECORDS OF THE COUNTY
OF PLUMAS, STATE OF CALIFORNIA.

TOTAL ACREAGE 40.68 AC.

SURVEYOR'S CERTIFICATE

THIS MAP WAS PREPARED BY ME OR UNDER MY DIRECTION AND WAS COMPILED
FROM RECORD DATA IN CONFORMANCE WITH THE REQUIREMENTS OF THE SUB-
DIVISION MAP ACT AT THE REQUEST OF JOSEPHINE JOHNSON IN SEPTEMBER,
1967. I HEREBY CERTIFY THAT IT CONFORMS TO THE APPROVED TENTATIVE
MAP AND THE CONDITIONS OF APPROVAL THEREOF, AND THAT ALL PROVISIONS
OF APPLICABLE STATE LAW AND LOCAL ORDINANCES HAVE BEEN COMPLIED
WITH.

Edward P. Norris
EDWARD P. NORRIS, L.S. 2846

LEGEND

3/4" IRON PIPE MARKED RCE 7294 AS
SHOWN ON R/S MAP, BOOK 3, PAGE 88.

COMPUTED CORNER LOCATION.

PARCEL MAP
A PORTION OF THE SOUTH HALF OF
SECTION 25, T.23N., R.13E., M.D.B.&M.
PLUMAS COUNTY, CALIFORNIA

MAP OF THE LANDS OF
JOSEPHINE JOHNSON
SCALE: 1" = 200' SEPTEMBER, 1967

WALTER B. GRIMES ASSOC.
CIVIL ENGINEERS & LAND SURVEYORS
1356 MANGROVE AVENUE, CHICO, CALIFORNIA

2pm 5