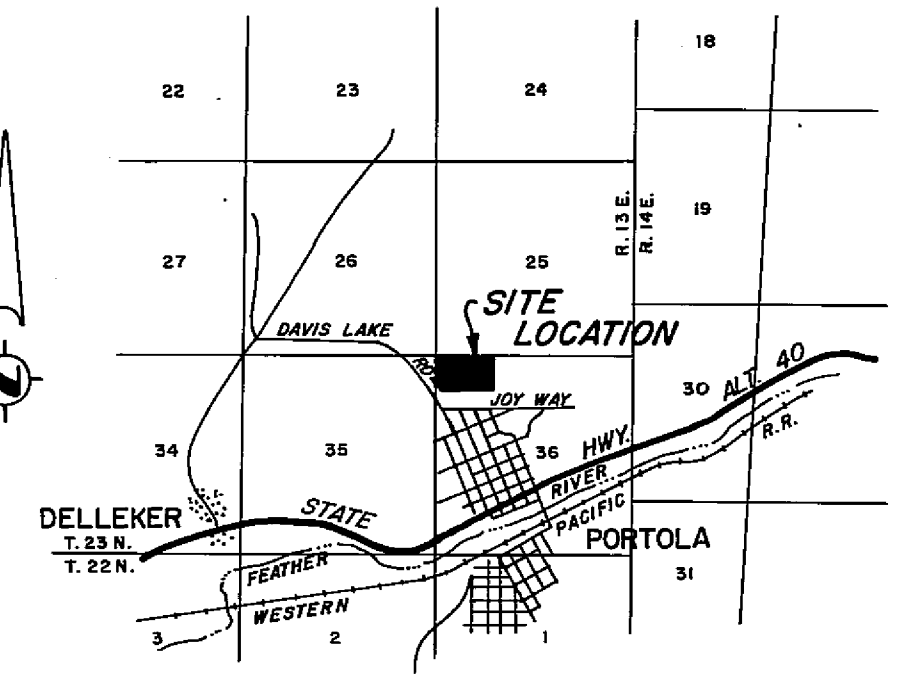


"A" - Δ = 02°17'31"
R = 750.25'
L = 30.01'

"B" - Δ = 08°00'35"
R = 750.25'
L = 104.88'

"C" - Δ = 00°56'46"
R = 750.25'
L = 12.39'



LOCATION MAP
SCALE: 1" = 1 Mile

- LEGEND**
- FOUND SECTION CORNER
 - FOUND 3/4" IRON PIPE MARKED RCE 7294
 - COMPUTED CORNER LOCATION

NOTES

THE BASIS OF BEARING IS THE NORTH LINE OF THE N.W. 1/4 OF SECTION 36, T.23N., R.13E., M.D.B. & M., GIVEN AS S 89° 56' 19" W ON THAT CERTAIN RECORD OF SURVEY MAP FILED MAY 31, 1967, IN BOOK 3 OF RECORD OF SURVEYS AT PAGE 88, RECORDING NO. 3890, IN THE PLUMAS COUNTY OFFICIAL RECORDS.

TOTAL ACREAGE 46.10 AC.

SURVEYOR'S CERTIFICATE

THIS MAP WAS PREPARED BY ME OR UNDER MY DIRECTION AND IS BASED UPON A FIELD SURVEY IN CONFORMANCE WITH THE REQUIREMENTS OF THE SUBDIVISION MAP ACT AT THE REQUEST OF ALBION J. JOY IN OCTOBER, 1967. I HEREBY CERTIFY THAT IT CONFORMS TO THE APPROVED TENTATIVE MAP AND THE CONDITIONS OF APPROVAL THEREOF, AND THAT ALL PROVISIONS OF APPLICABLE STATE LAW AND LOCAL ORDINANCES HAVE BEEN COMPLIED WITH.

Edward P. Norris
EDWARD P. NORRIS, L.S. 2846

RECORDER'S CERTIFICATE

FILED FOR RECORD THIS 29th DAY OF December, 1967, AT 1:20 P.M. IN BOOK 7 OF PARCEL MAPS AT PAGE 9 AT THE REQUEST OF WALTER B. GRIMES. RECORDING NO. 2720.

FEE 5.00

Ida Hogan Growold
COUNTY RECORDER

BY _____
DEPUTY

COUNTY ENGINEER'S CERTIFICATE

THIS MAP HAS BEEN EXAMINED FOR CONFORMANCE WITH THE REQUIREMENTS OF SECTION 11575 OF THE SUBDIVISION MAP ACT THIS 26th DAY OF DECEMBER, 1967.

Lawrence J. Brock
LAWRENCE J. BROCK, R.C.E. 13528

PARCEL MAP
A PORTION OF SECTIONS 35 & 36,
T.23 N., R.13 E., M.D.B. & M.
PLUMAS COUNTY, CALIFORNIA

MAP OF THE LANDS OF
ALBION J. JOY & CLARA E. JOY
AS TRUSTEES FOR
SCHERRY L. JOY

SCALE: 1" = 200' OCTOBER, 1967

WALTER B. GRIMES ASSOC.
CIVIL ENGINEERS & LAND SURVEYORS
1356 MANGROVE AVENUE, CHICO, CALIFORNIA