

SURVEYOR'S CERTIFICATE

THIS MAP WAS PREPARED BY ME OR UNDER MY
DIRECTION AND IS BASED UPON A FIELD SURVEY
IN CONFORMANCE WITH THE REQUIREMENTS OF THE
SUBDIVISION MAP ACT AT THE REQUEST OF THE
CHESTER PUBLIC UTILITIES DISTRICT IN NOVEMBER
1967.

I HEREBY CERTIFY THAT IT CONFORMS TO THE APPROVED TENTATIVE MAP AND THE CONDITIONS OF APPROVAL THEREOF; THAT ALL PROVISIONS OF APPLICABLE STATE LAW AND LOCAL ORDINANCES HAVE BEEN COMPLIED WITH.

Paul E. Simpson
PAUL E. SIMPSON, L. S. 3202

COUNTY ENGINEER'S CERTIFICATE

THIS MAP HAS BEEN EXAMINED THIS 22ND
DAY OF JANUARY, 1968, FOR CONFORMANCE
WITH THE REQUIREMENTS OF SECTION 11575 OF
THE SUBDIVISION MAP ACT.

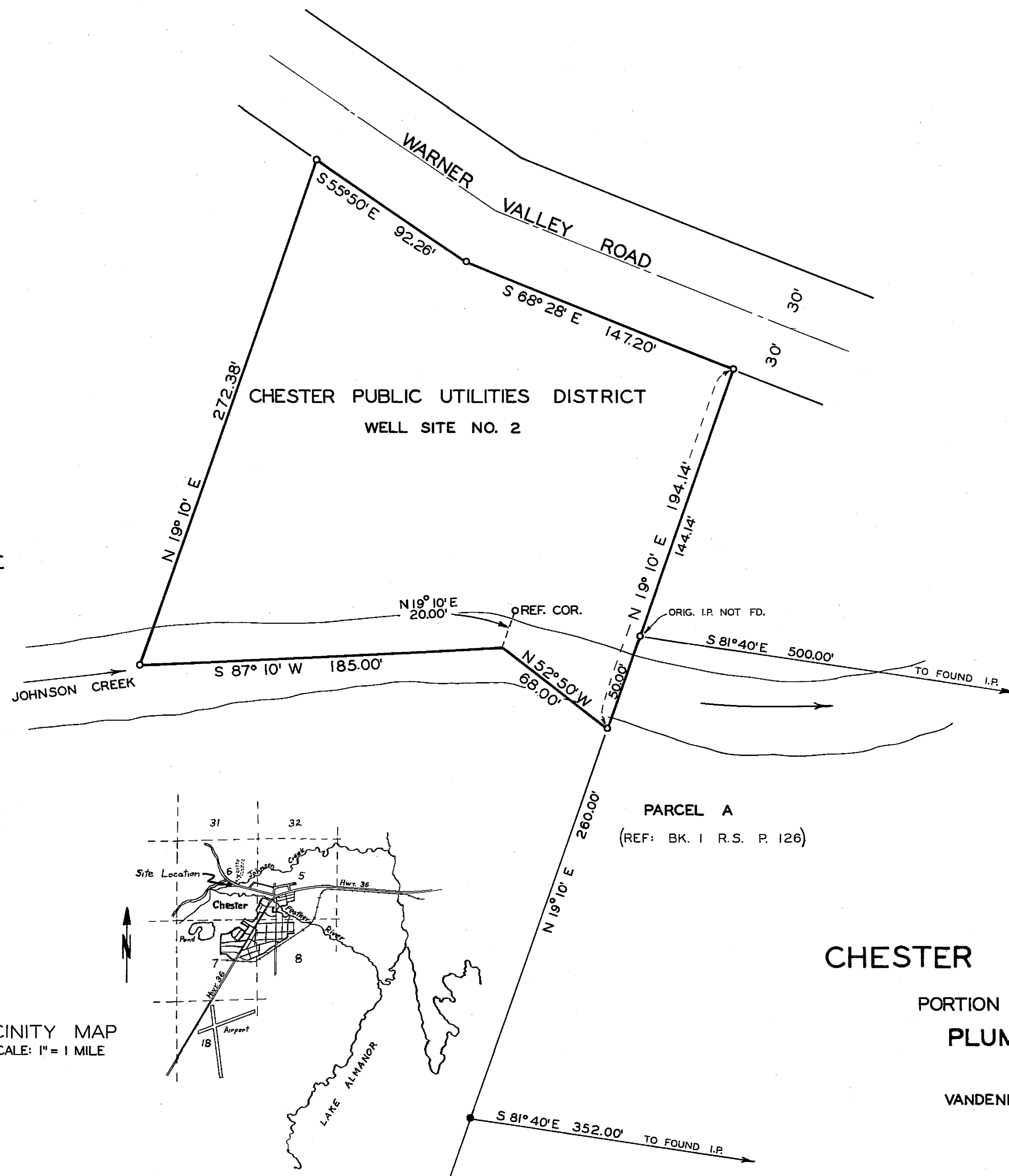
Lawrence J. Brock
LAWRENCE J. BROCK, R. C. E. 13528
PLUMAS COUNTY SURVEYOR

RECORDER'S CERTIFICATE

FILED THIS 22nd DAY OF January,
1968, AT 11:55 A M., IN BOOK 2 OF PARCEL
MAPS, AT PAGE 12, AT THE REQUEST OF
PAUL E. SIMPSON.

FEE: ~~\$590~~ *NO FEE*
FILE NO. *2924*

IDA HOGAN GRONVOLD
PLUMAS COUNTY RECORDER



SCALE: 1" = 40'

BASIS OF BEARINGS IS THE RECORD OF
SURVEY IN BOOK 1 ON PAGE 126.

— LEGEND —

FOUND IRON PIPE MONUMENT PER RECORD
OF SURVEY IN BOOK 1 ON PAGE 126.

 SET 1/2" IRON PIPE TAGGED "L.S. 3202".

PARCEL MAP FOR
CHESTER PUBLIC UTILITIES DISTRICT

PORTION OF SE 1/4 SEC. 6, T28N R7E, MDB&M

PLUMAS COUNTY, CALIFORNIA

SCALE: 1" = 40'

VANDENBERG & SIMPSON, ENGINEERS & SURVEYORS
SUSANVILLE, CALIFORNIA