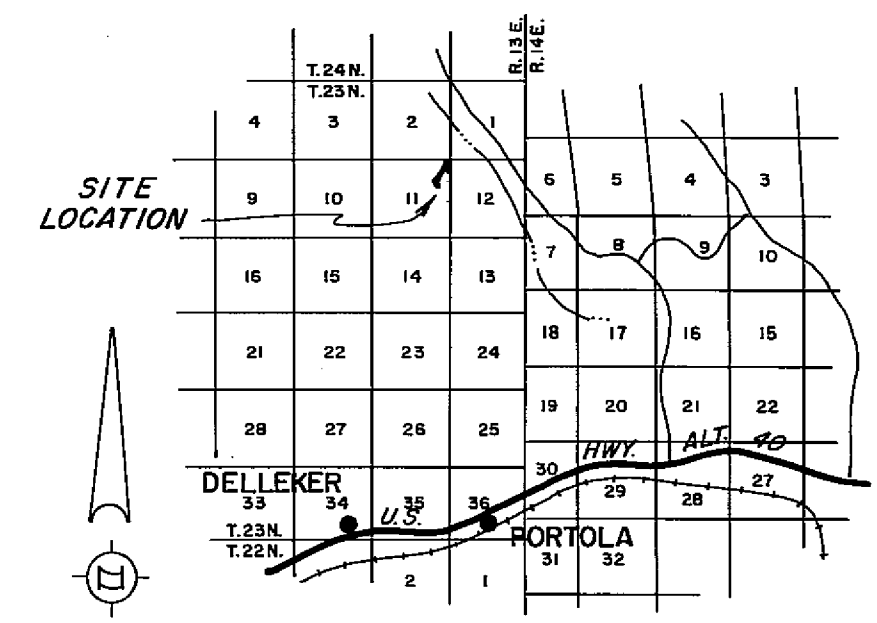
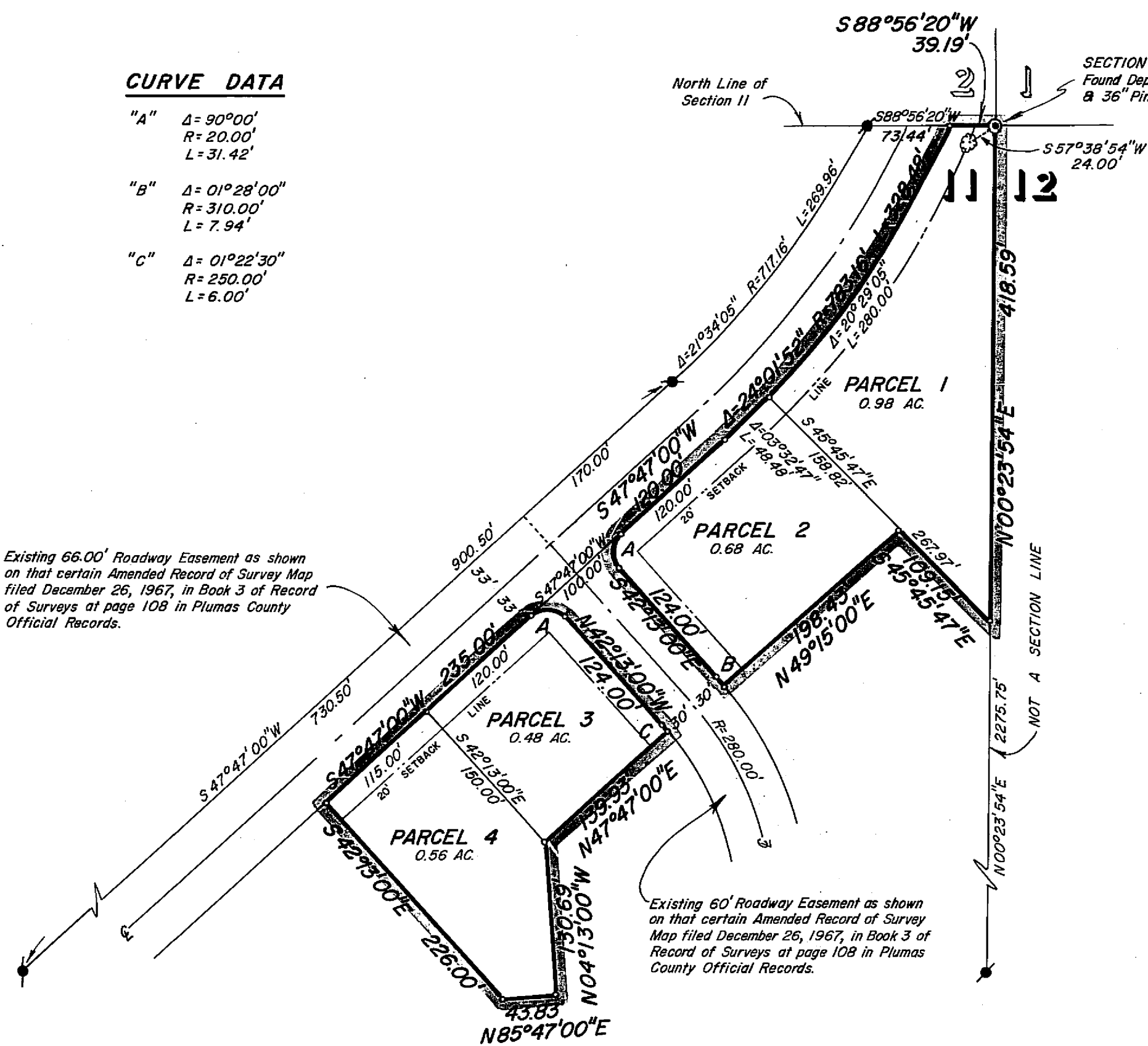


CURVE DATA

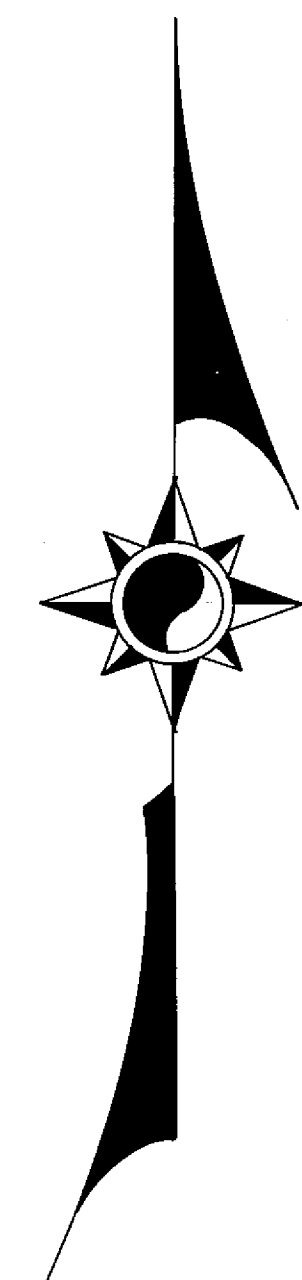
- "A" Δ = 90°00'
R = 20.00'
L = 31.42'
- "B" Δ = 01°28'00"
R = 310.00'
L = 7.94'
- "C" Δ = 01°22'30"
R = 250.00'
L = 6.00'

Existing 66.00' Roadway Easement as shown on that certain Amended Record of Survey Map filed December 26, 1967, in Book 3 of Record of Surveys at page 108 in Plumas County Official Records.

Existing 60' Roadway Easement as shown on that certain Amended Record of Survey Map filed December 26, 1967, in Book 3 of Record of Surveys at page 108 in Plumas County Official Records.



LOCATION MAP
SCALE: 1"=2-1/2 Miles



LEGEND

- FOUND 3/4" IRON PIPE MARKED RCE 7294
- FOUND SECTION CORNER AS SHOWN
- FOUND BEARING TREE
- COMPUTED CORNER LOCATION

NOTES

THE BASIS OF BEARING IS THE NORTH LINE OF SECTION 11, T.23N., R.13E., M.D.B.&M., GIVEN AS N88°56'20"E ON THAT CERTAIN AMENDED RECORD OF SURVEY MAP FILED DECEMBER 26, 1967, IN BOOK 3 OF RECORD OF SURVEYS AT PAGE 108, RECORDING NO. 2695, IN THE PLUMAS COUNTY OFFICIAL RECORDS.

TOTAL ACREAGE 2.70 AC.

SURVEYOR'S CERTIFICATE

THIS MAP WAS PREPARED BY ME OR UNDER MY DIRECTION AND IS BASED UPON A FIELD SURVEY IN CONFORMANCE WITH THE REQUIREMENTS OF THE SUBDIVISION MAP ACT AT THE REQUEST OF BIDWELL LAND AND DEVELOPMENT CO. IN JANUARY, 1968. I HEREBY CERTIFY THAT IT CONFORMS TO THE APPROVED TENTATIVE MAP AND THE CONDITIONS OF APPROVAL THEREOF, AND THAT ALL PROVISIONS OF APPLICABLE STATE LAW AND LOCAL ORDINANCES HAVE BEEN COMPLIED WITH.

Edward P. Norris
EDWARD P. NORRIS, L.S. 2846

RECORDER'S CERTIFICATE

FILED THIS 19th DAY OF March, 1968, AT 10:46 A.M.
IN BOOK 2 OF PARCEL MAPS AT PAGE 18 AT THE REQUEST OF
WALTER B. GRIMES. RECORDING NO. 3228

FEE 5⁰⁰

John Logan Grinstead
COUNTY RECORDER

BY _____
DEPUTY

COUNTY ENGINEER'S CERTIFICATE

THIS MAP HAS BEEN EXAMINED FOR CONFORMANCE WITH THE REQUIREMENTS OF SECTION 11575 OF THE SUBDIVISION MAP ACT THIS 19th DAY OF March, 1968.

Darrell P. Payne CE 8596
LAWRENCE J. BROCK, R.C.E. 13528
Asst. County Engineer

PARCEL MAP
A PORTION OF SECTIONS 11 & 12,
T. 23 N., R. 13 E., M.D.B. & M.
PLUMAS COUNTY, CALIFORNIA

MAP OF THE LANDS OF
BIDWELL LAND AND DEVELOPMENT CO.
SCALE: 1" = 100' JANUARY, 1968

G WALTER B. **A**
RIMES ASSOC.
CIVIL ENGINEERS & LAND SURVEYORS
1356 MANGROVE AVENUE, CHICO, CALIFORNIA