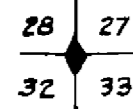


Basis of Bearing for this Record of Survey is California State Co-ordinate System, Zone I. Bearings shown are Grid bearings. Distances shown are Ground distances. To convert ground distances to grid distances within the Town of Taylorsville, multiply by 0.99981173.

The remaining field evidence of the location of the Indian Valley Railroad and the recorded calls to Section Corner 22-23-26-27 were used to reset said corner. A diligent search disclosed no acceptable monumentation for the East quarter corner of Section 27. The corner was therefore deemed lost and was re-established by single proportionate measure.

A diligent search disclosed no acceptable monumentation of the South or West quarter corners of Section 27. The South quarter corner of Section 27 was re-established by single proportionate measure and the West quarter corner was re-established by using record bearing and distance from the Southwest Section corner in accordance with G.L.O. instructions. The center of Section 27 was determined by the intersection of a line from the South quarter corner having a bearing determined by the mean of the East and West boundaries of Section 27 with the East-West centerline of the Section.

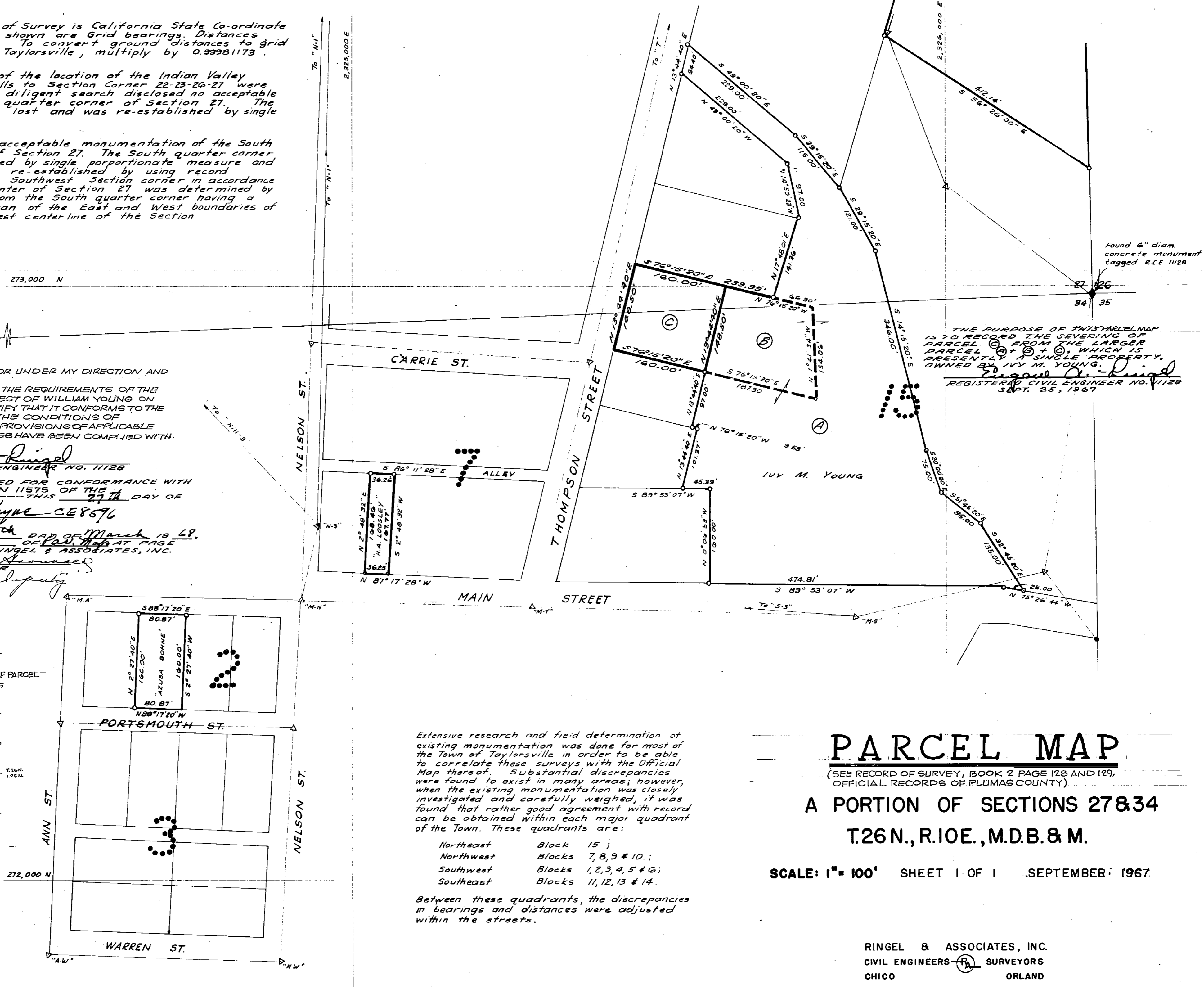
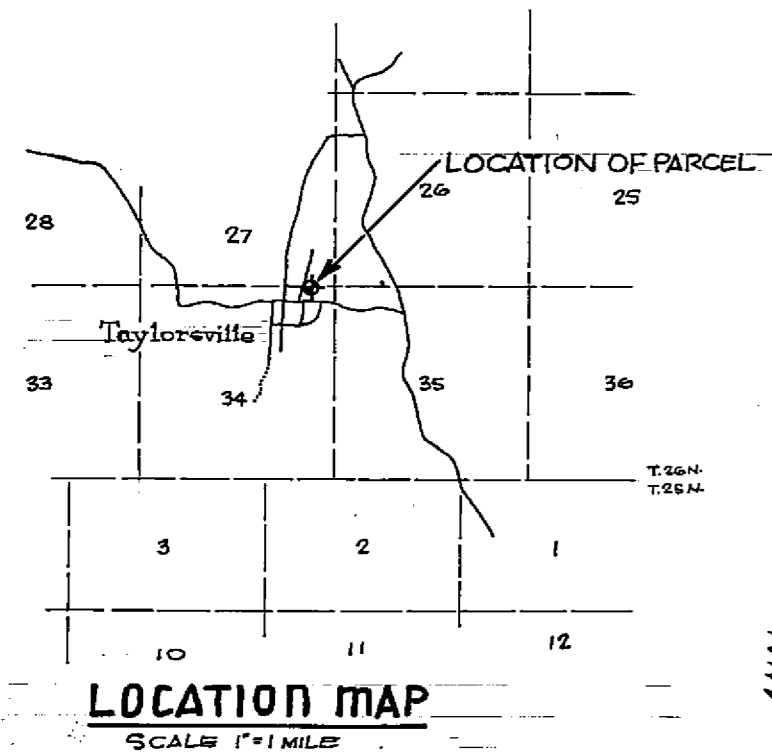


THIS MAP WAS PREPARED BY ME OR UNDER MY DIRECTION AND WAS COMPILED FROM RECORD DATA IN CONFORMANCE WITH THE REQUIREMENTS OF THE SUBDIVISION MAP ACT AT THE REQUEST OF WILLIAM YOUNG ON SEPTEMBER 1, 1967. I HEREBY CERTIFY THAT IT CONFORMS TO THE APPROVED TENTATIVE MAP AND THE CONDITIONS OF APPROVAL THEREOF; THAT ALL PROVISIONS OF APPLICABLE STATE LAW AND LOCAL ORDINANCES HAVE BEEN COMPLIED WITH.

Eugene A. Ringel
REGISTERED CIVIL ENGINEER NO. 11128

THIS MAP HAS BEEN EXAMINED FOR CONFORMANCE WITH THE REQUIREMENTS OF SECTION 11575 OF THE SUBDIVISION MAP ACT THIS 27th DAY OF March 1968.
#3390 *Asst. Darrell P. Payne* CE 8576
COUNTY SURVEYOR

FILED FOR RECORD THIS 27th DAY OF March 1968, AT 2:45 P.M. IN BOOK 2 OF P.M. MAP AT PAGE 19, AT THE REQUEST OF RINGEL & ASSOCIATES, INC.
Dea. Norman Alward
COUNTY RECORDER
Hebecker, Deputy



Extensive research and field determination of existing monumentation was done for most of the Town of Taylorsville in order to be able to correlate these surveys with the Official Map thereof. Substantial discrepancies were found to exist in many areas; however, when the existing monumentation was closely investigated and carefully weighed, it was found that rather good agreement with record can be obtained within each major quadrant of the Town. These quadrants are:

- Northeast Block 15;
- Northwest Blocks 7, 8, 9 & 10;
- Southwest Blocks 1, 2, 3, 4, 5 & 6;
- Southeast Blocks 11, 12, 13 & 14.

Between these quadrants, the discrepancies in bearings and distances were adjusted within the streets.

PARCEL MAP

(SEE RECORD OF SURVEY, BOOK 2 PAGE 128 AND 129, OFFICIAL RECORDS OF PLUMAS COUNTY)

A PORTION OF SECTIONS 27 & 34
T.26N., R.10E., M.D.B. & M.

SCALE: 1" = 100' SHEET 1 OF 1 SEPTEMBER 1967

RINGEL & ASSOCIATES, INC.
CIVIL ENGINEERS & SURVEYORS
CHICO ORLAND