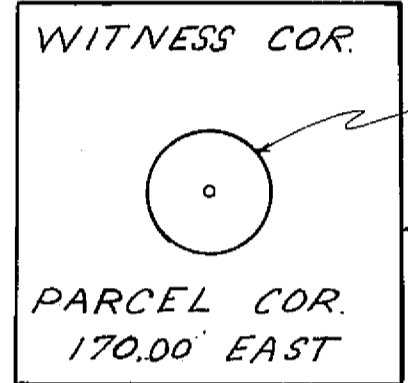


N.W. 1/4, N.W. 1/4 Sec. 34, T.27N., R.9E.  
(M.D.M.)

Q (Total)  
R = 1020  
Δ = 29°42'00"  
L = 439.72'  
C = 436.32'



TYPICAL WITNESS CORNER TAG

- LEGEND
- o W.C. Set 1 1/4" Iron Pipe Witness Corner, tagged as noted
  - o Set 1/2" Steel Pin and Plastic Cap stamped R.C.E. 11173
  - Found monuments as noted
  - Rec. Records (From deed or filed map)
  - Mea.Meas. Measured
  - Calc. Calculated
  - O.R. Official Records (Plumas County)
  - Bk. Book
  - p. Page
  - Fd. Found
  - I.P. Iron Pipe
  - I.P.& T. Iron Pipe and Tag

SCALE 1"=50'

SURVEYOR'S CERTIFICATE

This map was prepared by me or under my direction (and is based upon a field survey) in conformance with the requirements of the Subdivision Map Act at the request of B. W. Adams, May 27, 1968. I hereby certify that it conforms to the approved tentative map and the conditions of approval thereof; that all provisions of applicable state law and local ordinances have been complied with.

*John C. Simpson*  
John C. Simpson  
R.C.E. 11173



COUNTY SURVEYOR'S CERTIFICATE

This map has been examined this 3rd day of June, 1968, for conformance with the requirements of Section 11575 of the Subdivision Map Act.

*Darrell P. Payne*  
Darrell P. Payne, C.E. 8596  
Plumas County Surveyor

NOTE

Tentative Map approved by Planning Commission May 20, 1968

PARCEL MAP  
OF  
FOUR PARCELS WITHIN  
N.W. 1/4, N.W. 1/4, SEC. 34, T.27N., R.9E.  
(M.D.M.)

PLUMAS COUNTY CALIFORNIA  
RECORD OWNER B.W. ADAMS

JOHN C. SIMPSON P.E.  
CIVIL ENGINEER  
QUINCY CALIFORNIA

RECORDER'S CERTIFICATE

Filed this 3rd day of June, 1968, at 1:25 P.M. in Book 2 of Parcel Maps at Page 25 at the request of John C. Simpson.

*Ira Hogan Gronwald*  
Ira Hogan Gronwald  
Plumas County Recorder

Fee \$5.00  
File No. 4016