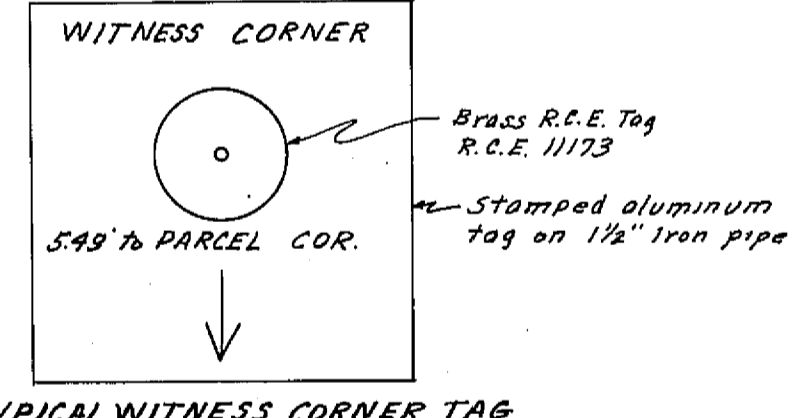
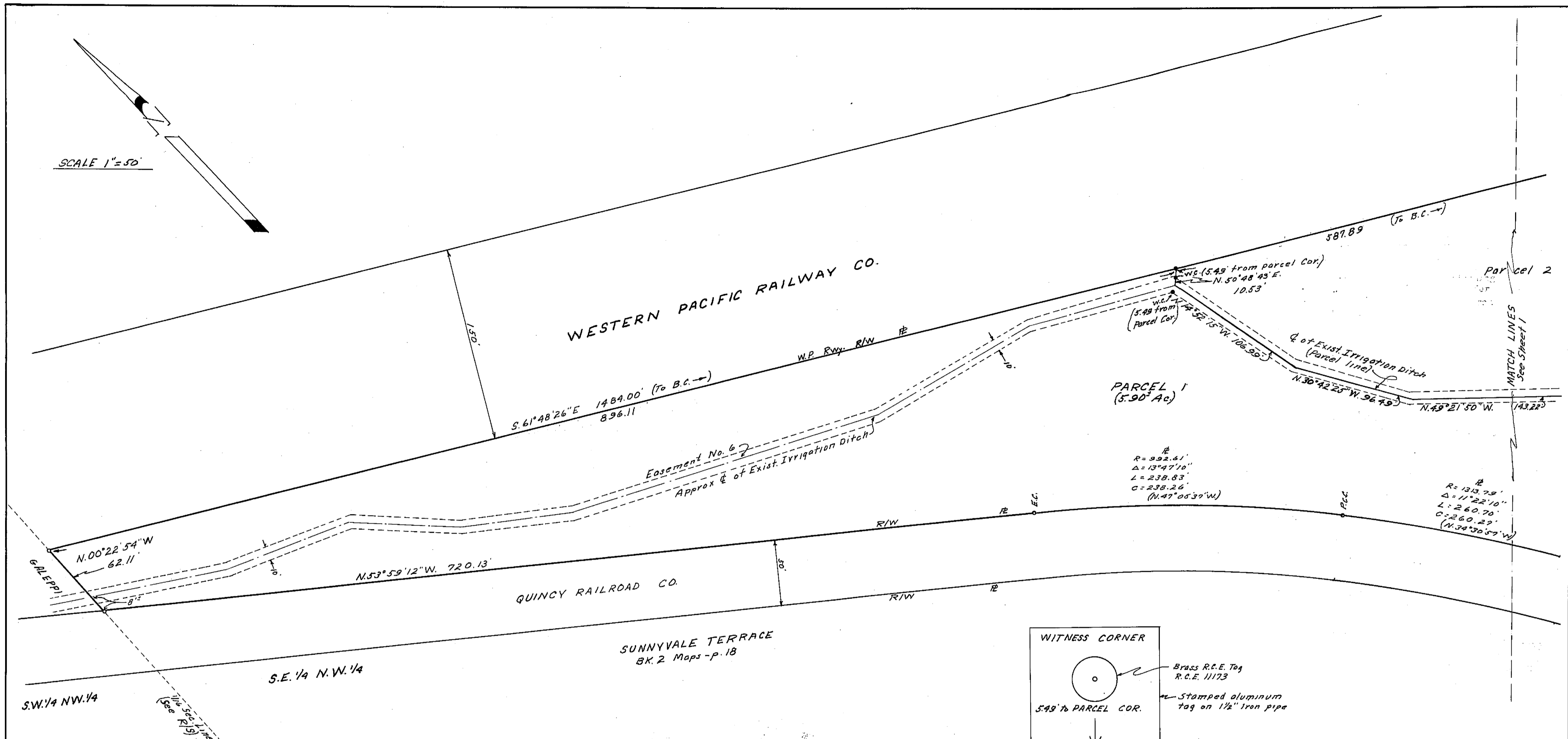


SCALE 1"=50'



Easement No. 1

60' Easement for roadway, utilities, drainage facilities and incidental purposes, granted to Simpson - O.R. Bk. 174, p. 428 (for benefit of Zampedri parcel and Parcel 1 hereon),

Granted to Zampedri (by predecessor Simpson) O.R. Bk. 176, p. 396

To be granted in connection with conveyance of Parcel 2 hereon for benefit thereof (See also R/S Bk. 3, p. 97, 98 & 99 and P.M. Bk. 1, p. 81 and 82)

Easement No. 2

50' Easement for roadway, utilities, drainage and incidental purposes for benefit of Parcel 1 hereon, reserved by Simpson in conveyance to Zampedri O.R. Bk. 176, p. 396

Easement No. 3

60' Easement for roadway, utilities, drainage and incidental purposes granted to Simpson O.R. Bk. 174, p. 428, Zampedri O.R. Bk. 176, p. 396, to be granted in connection with conveyance to Parcel 2 hereon for benefit thereof.

Easement No. 4

(Quincy R.R. to Western Pacific Rwy.) - 80' Easement for roadway, utilities, drainage and incidental purposes granted to Chamberlain O.R. Bk. 169, p. 741.

To be granted in connection with conveyance of Parcel 2 hereon for benefit thereof.

Easement No. 5

30' Easement for roadway, utilities, drainage and incidental purposes to be granted in connection with conveyance of Parcel 2 hereon for benefit thereof.

Easement No. 6

16' Easement to be reserved to permit continued operation and maintenance of an existing irrigation ditch at the parcel corner of Parcel 1 hereon.

JOHN C. SIMPSON, P.E.
CIVIL ENGINEER
QUINCY - CALIFORNIA

PARCEL MAP
OF
SUBDIVISION INTO THREE PARCELS
OF
CERTAIN LANDS OF ERNEST G. LEONHARDT
IN SECTION 8, T.24 N., R.10 E. (M.D.M.)
PLUMAS COUNTY - CALIFORNIA
SHEET 2 OF 2