

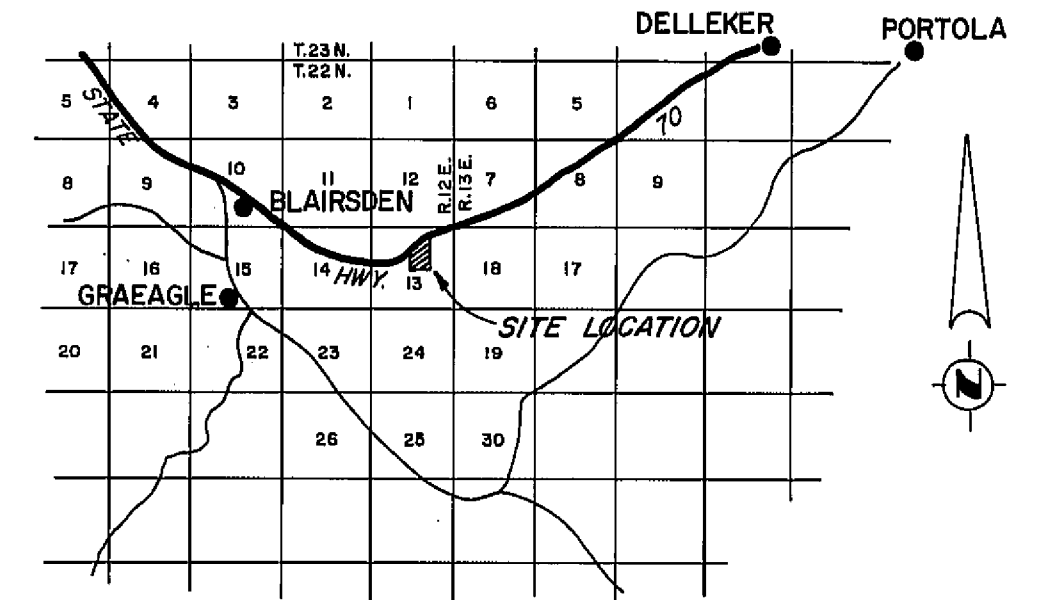
**NOTES**

THE BASIS OF BEARING IS THE CENTERLINE OF STATE HIGHWAY ROUTE NO. 70 FROM STA. F200+10.71 TO STA. F220+97.10 GIVEN AS N 46°11'20"E ON THE RECONSTRUCTION MAP THEREOF DATED MARCH, 1960.

TOTAL ACREAGE 50.42 AC.

**LEGEND**

FOUND 3/4" IRON PIPE MARKED LS 2846  
 SET 3/4" IRON PIPE MARKED RCE 7294  
 COMPUTED CORNER LOCATION



**LOCATION MAP**

SCALE: 1" = 2-1/2 Miles

**RECORDER'S CERTIFICATE**

FILED THIS 3<sup>rd</sup> DAY OF October, 1968, AT 4:05 P.M.  
 IN BOOK 2 OF PARCEL MAPS AT PAGE 40 AT THE REQUEST OF  
 WALTER B. GRIMES. RECORDING NO. 2003

FEE 5.00

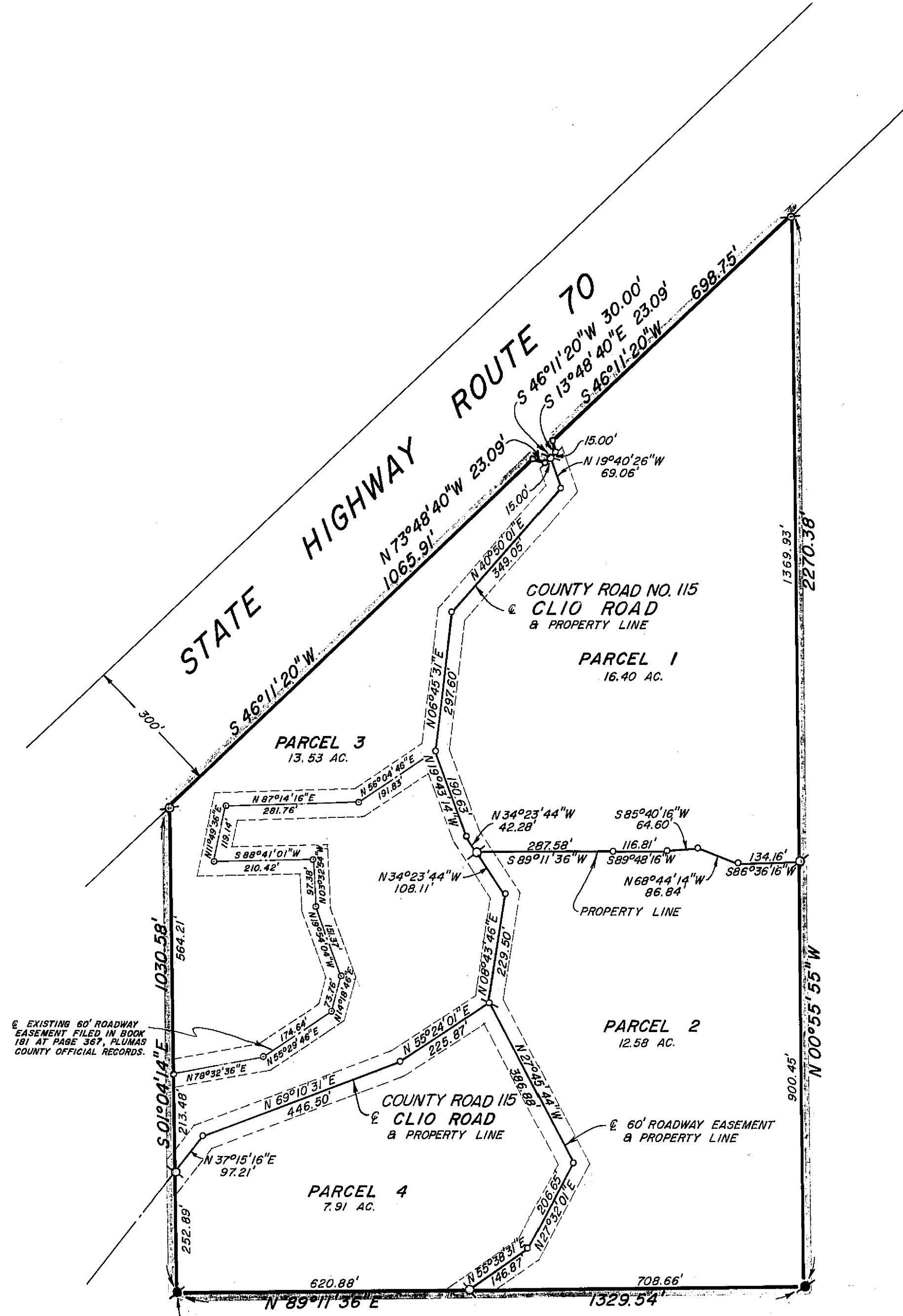
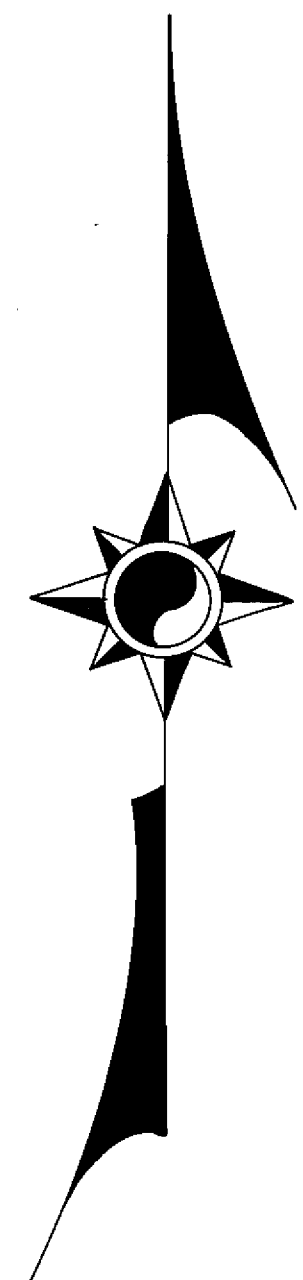
*Ida Hogan Gunwood*  
 COUNTY RECORDER

BY \_\_\_\_\_  
 DEPUTY

**COUNTY ENGINEER'S CERTIFICATE**

THIS MAP HAS BEEN EXAMINED FOR CONFORMANCE WITH THE REQUIREMENTS OF SECTION 11575 OF THE SUBDIVISION MAP ACT THIS 23rd DAY OF September, 1968.

*Darrell P. Payne*  
 DARRELL P. PAYNE, R.C.E. 8596



**SURVEYOR'S CERTIFICATE**

THIS MAP WAS PREPARED BY ME OR UNDER MY DIRECTION AND IS BASED UPON A FIELD SURVEY IN CONFORMANCE WITH THE REQUIREMENTS OF THE SUBDIVISION MAP ACT AT THE REQUEST OF ROBERT TROMBLY IN AUGUST, 1968. I HEREBY CERTIFY THAT IT CONFORMS TO THE APPROVED TENTATIVE MAP AND THE CONDITIONS OF APPROVAL THEREOF, AND THAT ALL PROVISIONS OF APPLICABLE STATE LAW AND LOCAL ORDINANCES HAVE BEEN COMPLIED WITH.

*Edward P. Norris*  
 EDWARD P. NORRIS, L.S. 2846

**PARCEL MAP**  
 A PORTION OF SECTION 13,  
 T. 22 N., R. 12 E., M. D. B. & M.  
 PLUMAS COUNTY, CALIFORNIA

MAP OF THE LANDS OF  
 ROBERT TROMBLY

SCALE: 1" = 200' AUGUST, 1968

**G** WALTER B. **A**  
 RIMES ASSOC.