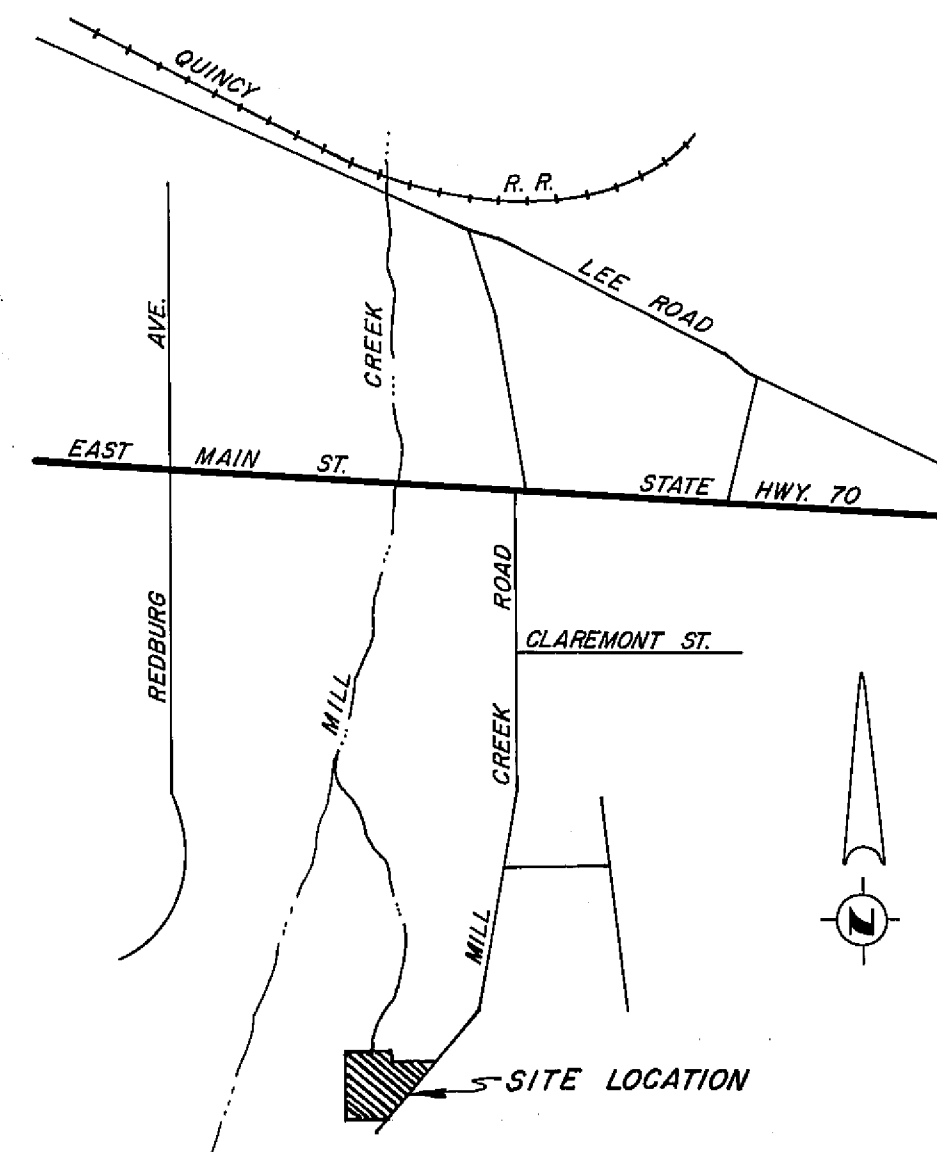
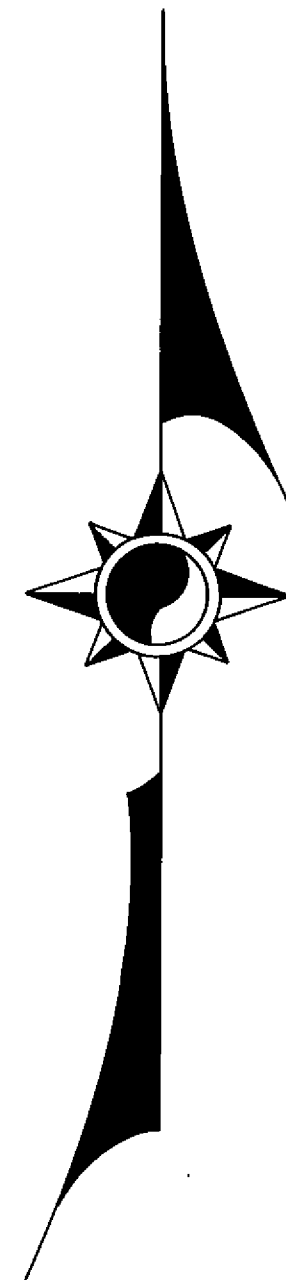
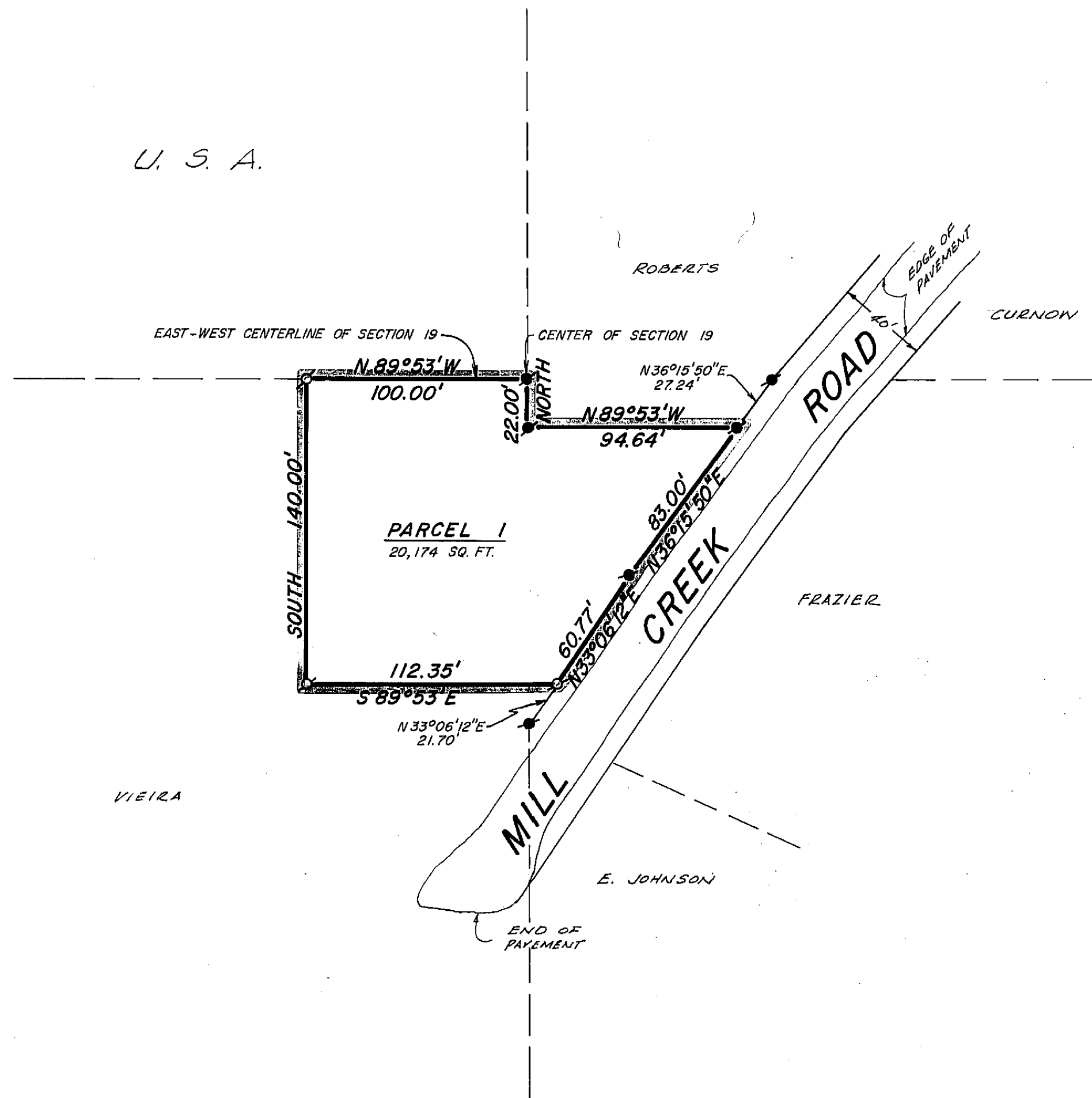


U. S. A.



LOCATION MAP  
NO SCALE

LEGEND

FOUND PIPE OR PIN MARKED RCE 11173  
SET 3/4" IRON PIPE MARKED RCE 7294

NOTES

THE BASIS OF BEARING IS THE EAST-WEST CENTERLINE OF SECTION 19, T.24N., R.10E., M.D.B.&M., GIVEN AS S 89°53'E ON THAT CERTAIN RECORD OF SURVEY MAP FILED IN BOOK 1 OF RECORD OF SURVEYS AT PAGE 9 IN THE PLUMAS COUNTY OFFICIAL RECORDS.

TOTAL ACREAGE 0.46 AC.

SURVEYOR'S CERTIFICATE

THIS MAP WAS PREPARED BY ME OR UNDER MY DIRECTION AND IS BASED UPON A FIELD SURVEY IN CONFORMANCE WITH THE REQUIREMENTS OF THE SUBDIVISION MAP ACT AT THE REQUEST OF JOE VIEIRA IN AUGUST, 1968. I HEREBY CERTIFY THAT IT CONFORMS TO THE APPROVED TENTATIVE MAP AND THE CONDITIONS OF APPROVAL THEREOF, AND THAT ALL PROVISIONS OF APPLICABLE STATE LAW AND LOCAL ORDINANCES HAVE BEEN COMPLIED WITH.

*Edward P. Norris*  
EDWARD P. NORRIS, L.S. 2846

RECORDER'S CERTIFICATE

FILED THIS 1<sup>st</sup> DAY OF November, 1968, AT 3:30 P.M. IN BOOK 2 OF PARCEL MAPS AT PAGE 43 AT THE REQUEST OF WALTER B. GRIMES. RECORDING NO. 2367.

FEE 5.00.

*Ida Logan Gronwald*  
COUNTY RECORDER

BY \_\_\_\_\_  
DEPUTY

COUNTY ENGINEER'S CERTIFICATE

THIS MAP HAS BEEN EXAMINED FOR CONFORMANCE WITH THE REQUIREMENTS OF SECTION 11575 OF THE SUBDIVISION MAP ACT THIS 1<sup>st</sup> DAY OF November, 1968.

*Darrell P. Payne*  
DARRELL P. PAYNE, R.C.E. 8596

PARCEL MAP  
A PORTION OF THE SOUTH 1/2 OF  
SECTION 19, T.24N., R.10E., M.D.B.&M.  
PLUMAS COUNTY, CALIFORNIA

MAP OF THE LANDS OF  
JOE VIEIRA

SCALE: 1" = 50'

AUGUST, 1968

**G** WALTER B. **A**  
RIMES ASSOC.  
CIVIL ENGINEERS & LAND SURVEYORS  
1356 MANGROVE AVENUE, CHICO, CALIFORNIA

2 pm 43  
15 min  
4 pages