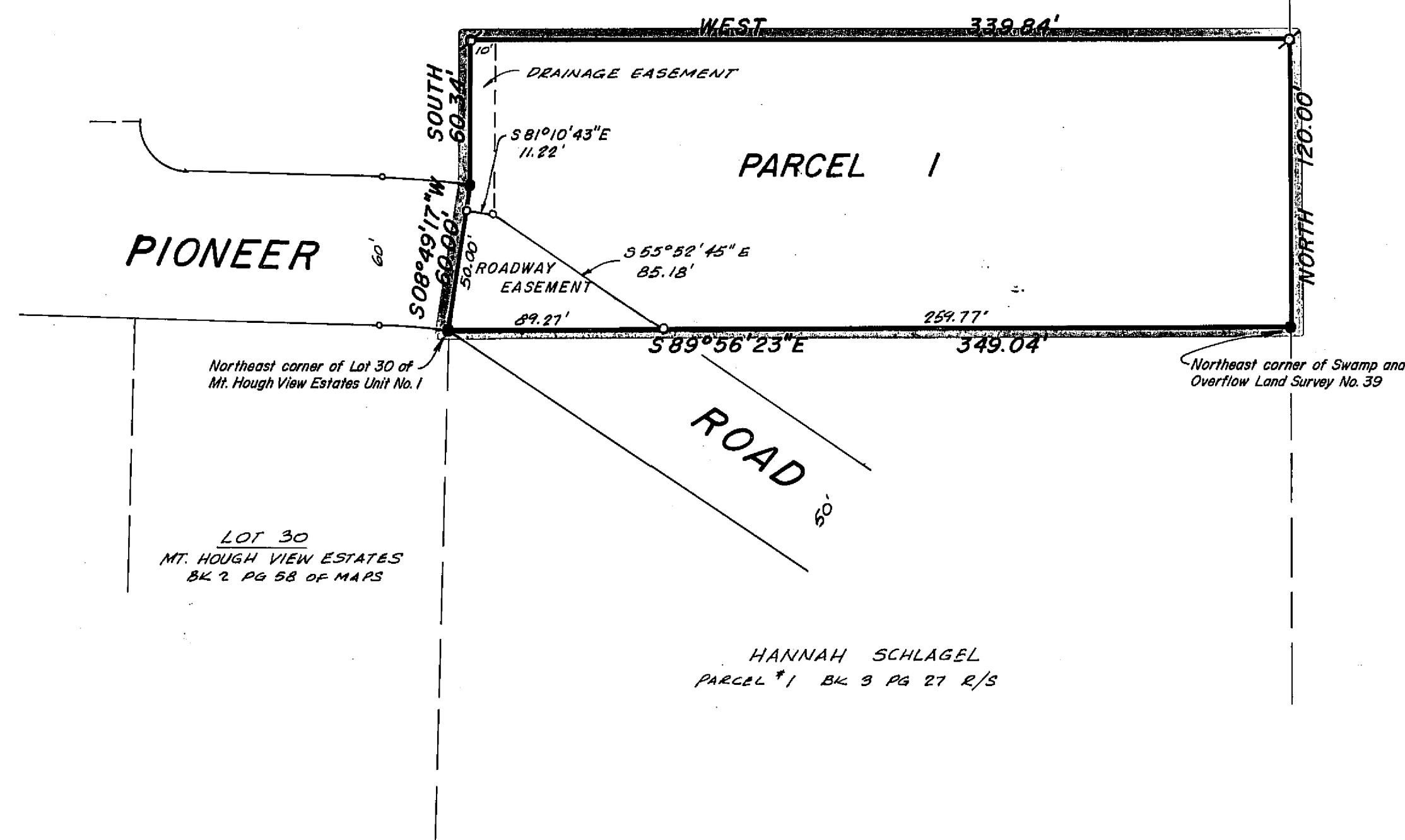
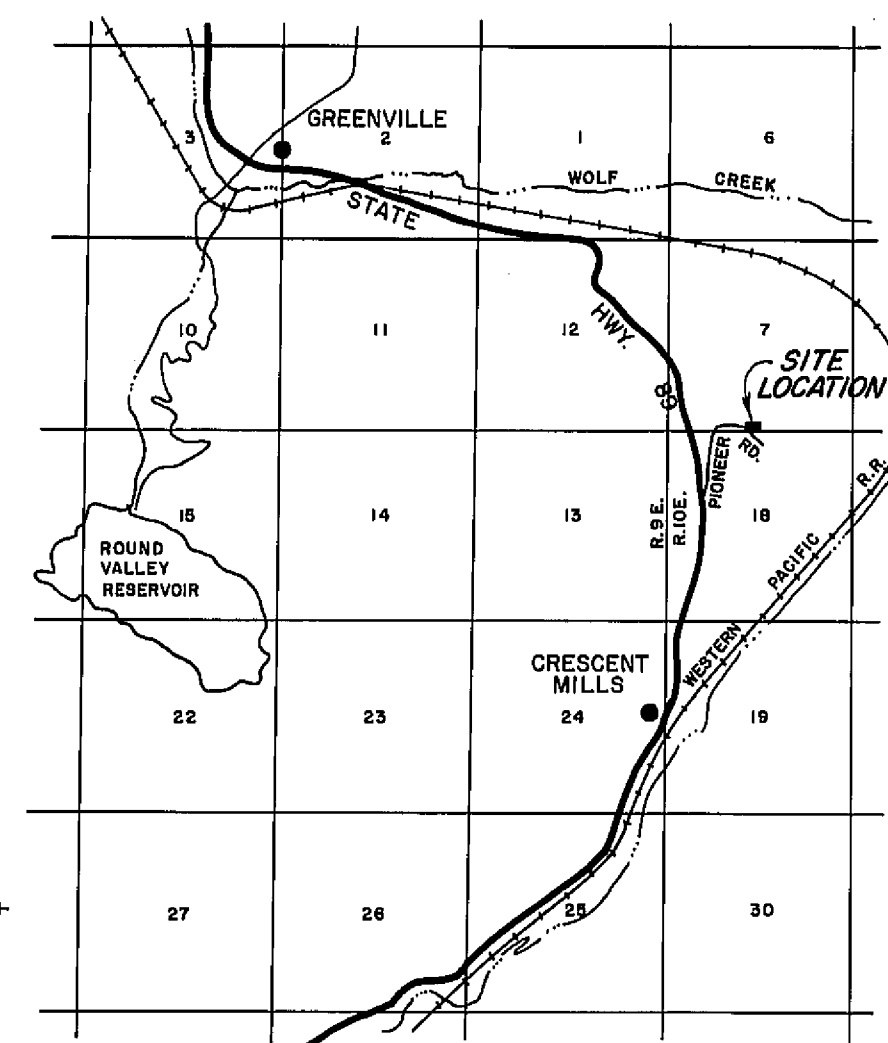
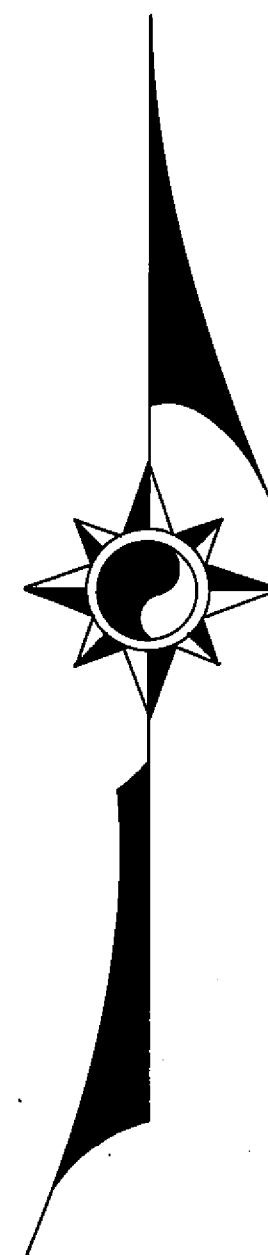


MOUNT HOUGH VIEW ESTATES INC.



U. S. A.



LOCATION MAP
SCALE: 1" = 1 Mile

LEGEND

SET 3/4" IRON PIPE MARKED LS 2846
FOUND 1" IRON PIPE MARKED RCE 11128
COMPUTED CORNER LOCATION



NOTES

THE BASIS OF BEARING IS THE NORTH LINE OF PARCEL 1, GIVEN AS N 89°56'23"W ON THAT CERTAIN RECORD OF SURVEY MAP FILED JULY 14, 1965, IN BOOK 3 OF SURVEYS AT PAGE 27, FILE NO. 185, IN THE PLUMAS COUNTY OFFICIAL RECORDS.

TOTAL ACREAGE

0.94 AC.

SURVEYOR'S CERTIFICATE

THIS MAP WAS PREPARED BY ME OR UNDER MY DIRECTION AND IS BASED UPON A FIELD SURVEY IN CONFORMANCE WITH THE REQUIREMENTS OF THE SUBDIVISION MAP ACT AT THE REQUEST OF DENNIS LEE SCHLAGEL IN OCTOBER, 1967. I HEREBY CERTIFY THAT IT CONFORMS TO THE APPROVED TENTATIVE MAP AND THE CONDITIONS OF APPROVAL THEREOF, AND THAT ALL PROVISIONS OF APPLICABLE STATE LAW AND LOCAL ORDINANCES HAVE BEEN COMPLIED WITH.

Edward P. Norris
EDWARD P. NORRIS, L.S. 2846

RECORDER'S CERTIFICATE

FILED FOR RECORD THIS 1st DAY OF November, 1968, AT 3:31 P.M. IN BOOK 2 OF PARCEL MAPS AT PAGE 44 AT THE REQUEST OF WALTER B. GRIMES. RECORDING NO. 2368.

FEE 5.00

Walter B. Grimes
COUNTY RECORDER

BY _____
DEPUTY

COUNTY ENGINEER'S CERTIFICATE

THIS MAP HAS BEEN EXAMINED FOR CONFORMANCE WITH THE REQUIREMENTS OF SECTION 11575 OF THE SUBDIVISION MAP ACT THIS 1st DAY OF November, 1968.

Darrell P. Pogue RCE 8526
LAWRENCE J. BROCK, RCE 13526

PARCEL MAP
A PORTION OF THE S.W. 1/4 OF
SECTION 7, T.26N., R.10E., M.D.B.&M.
PLUMAS COUNTY, CALIFORNIA

MAP OF THE LANDS OF
MOUNT HOUGH VIEW ESTATES INCORPORATED
SCALE: 1" = 50' OCTOBER, 1968

G WALTER B. ASSOC.
RIMES
CIVIL ENGINEERS & LAND SURVEYORS
1356 MANGROVE AVENUE, CHICO, CALIFORNIA