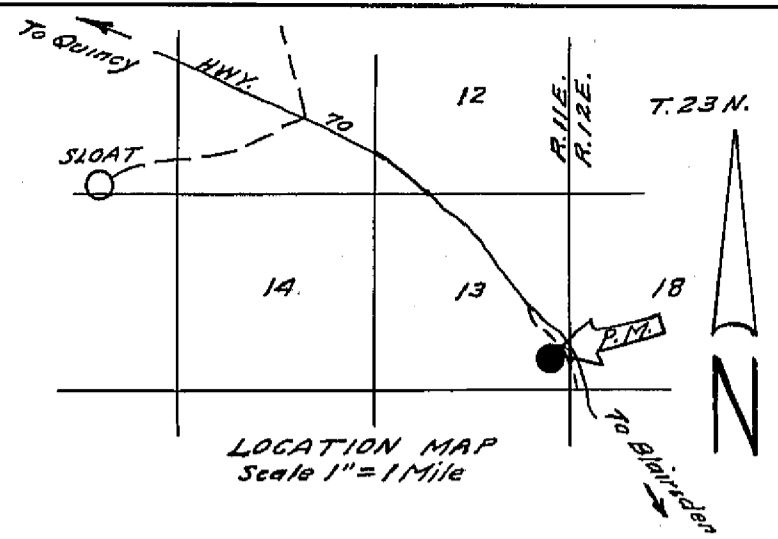
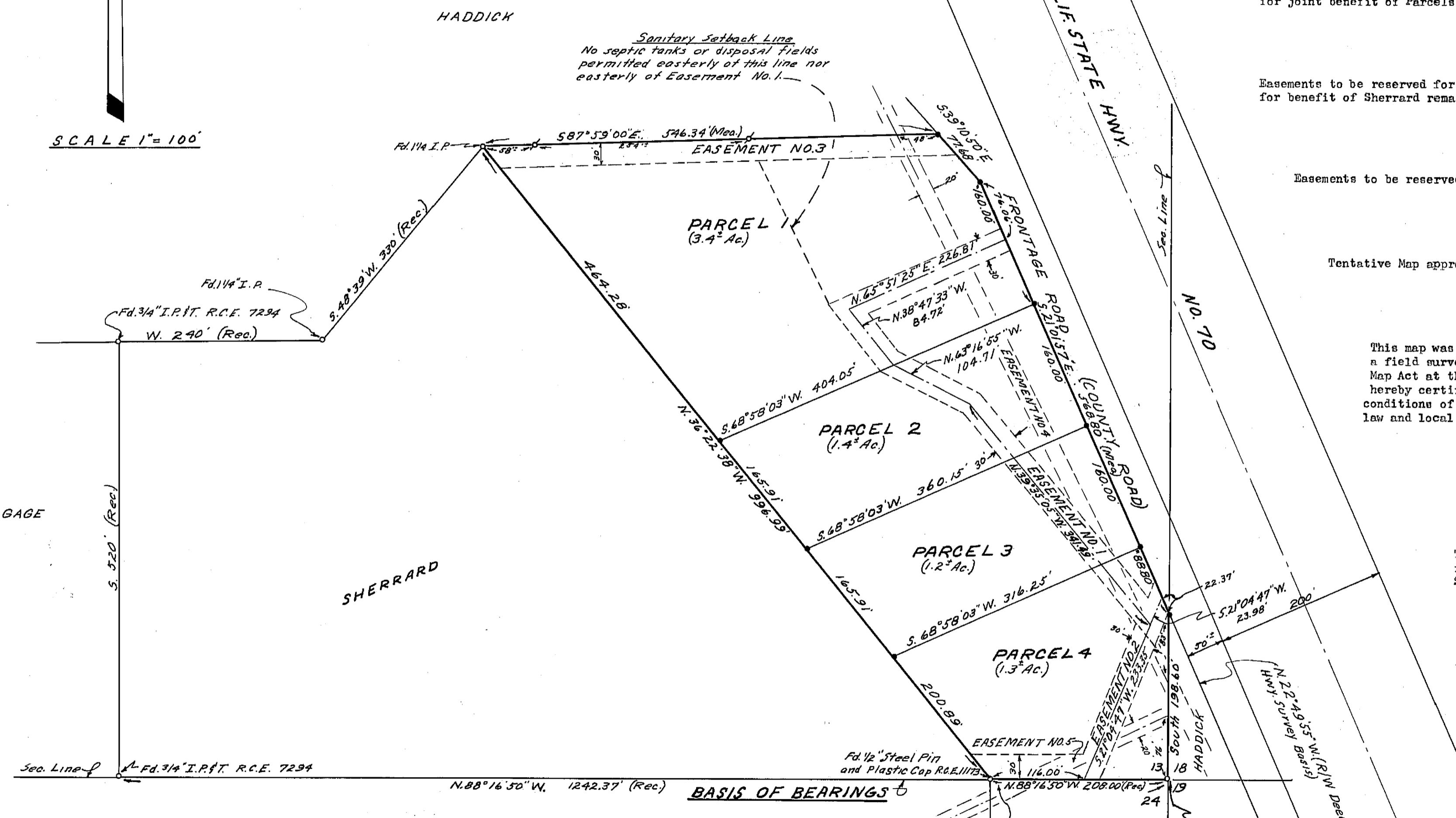


SCALE 1" = 100'



S.E. 1/4, S.E. 1/4, Sec. 13, T.23 N., R.12 E. (M.D.M.)



GAGE

SHERRARD

WARD

VAIL (BK.2, P.M.-P.26)

LEGEND

o	Found monuments as indicated	R.C.E.	Registered Civil Engineer
•	Set 1/2" Steel pin with plastic cap stamped "R.C.E. 11173"	Bk.	Book
	Record (Deed, Parcel Map, etc.)	p.	Page
Rec.	Record (Deed, Parcel Map, etc.)	P.M.	Parcel Map
Mea.	Measured	Ac.	Acre
Fd.	Found	Sec.	Section
I.P.	Iron Pipe	R/W	Right-of-Way
I.P. & T.	Iron Pipe and Tag		

EASEMENT NO. 1
Easement to be reserved for roadway, utility, drainage and incidental purposes for joint benefit of Parcels 1, 2, 3 & 4.

EASEMENTS NO. 2 & 3
Easements to be reserved for roadway, utility, drainage and incidental purposes for benefit of Sherrard remainder.

EASEMENTS NO. 4 & 5
Easements to be reserved for existing overhead electric utility lines.

NOTE
Tentative Map approved by Plumas County Planning Commission Oct. 28, 1968.

SURVEYOR'S CERTIFICATE
This map was prepared by me or under my direction (and is based upon a field survey) in conformance with the requirements of the Subdivision Map Act at the request of William M. Sherrard, October 15, 1968. I hereby certify that it conforms to the approved tentative map and the conditions of approval thereof; that all provisions of applicable state law and local ordinances have been complied with.

John C. Simpson
John C. Simpson
R.C.E. 11173

COUNTY SURVEYOR'S CERTIFICATE
This map has been examined this 4th day of Nov., 1968, for conformance with the requirements of Section 11575 of the Subdivision Map Act.
Darrell P. Payne
Plumas County Surveyor



PARCEL MAP
OF
SUBDIVISION OF FOUR PARCELS
A PORTION OF THE LANDS OF
WILLIAM M. SHERRARD
RECORD OWNER
NEAR CROMBERG
PLUMAS COUNTY - CALIFORNIA

RECORDER'S CERTIFICATE
Filed this 4th day of Nov., 1968, at 2:35 P.M.
in Book 2 of Parcel Maps at Page 46 at the request of
John C. Simpson.
Ida Hogan Gronvold
Ida Hogan Gronvold
Plumas County Recorder

N.E. 1/4, N.E. 1/4 Sec. 24

Fee \$5.00
File No. 2388

JOHN C. SIMPSON - P.E.
CIVIL ENGINEER
QUINCY - CALIFORNIA