

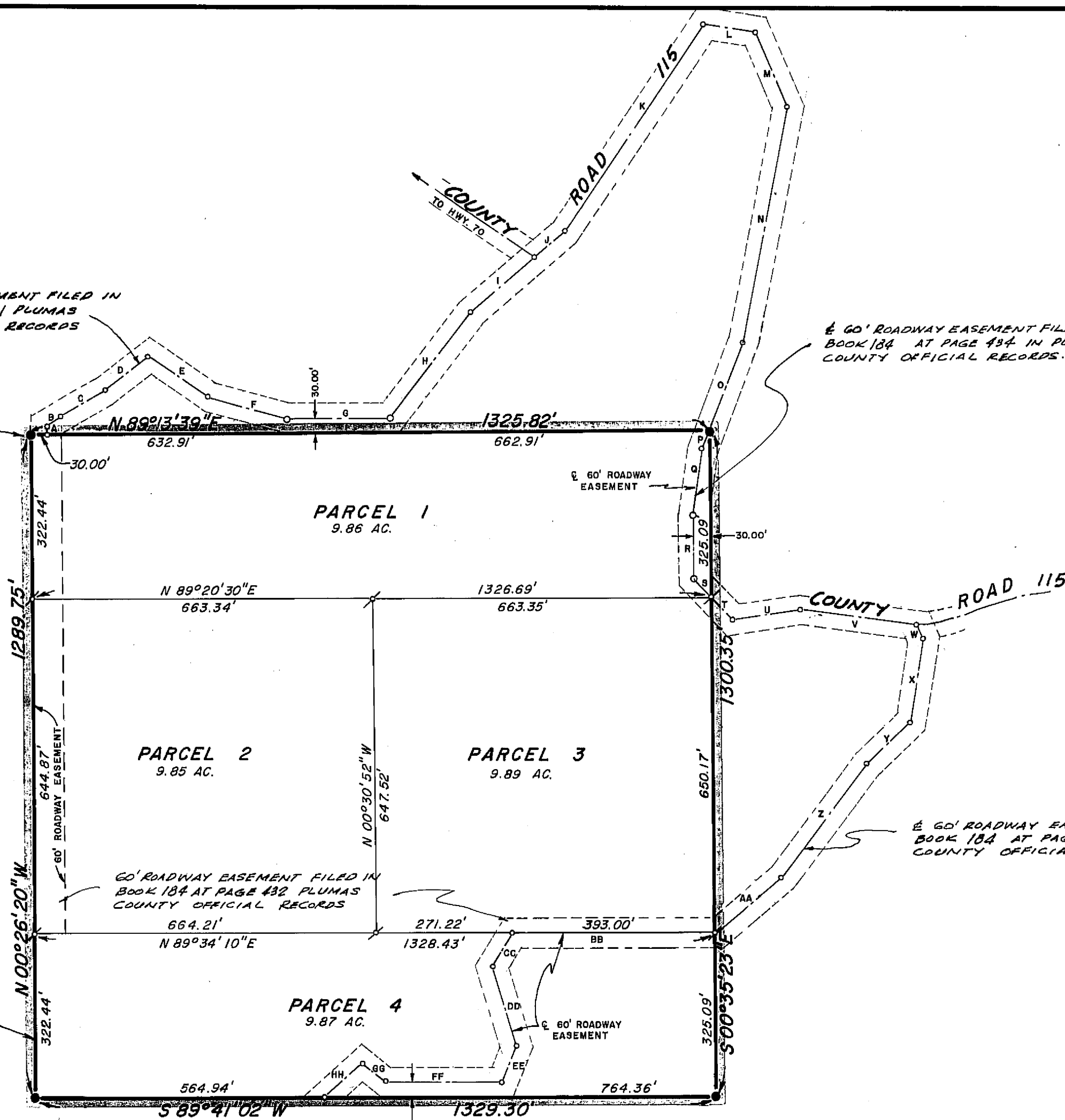
60' ROADWAY EASEMENT FILED IN BOOK 184 AT PAGE 431 PLUMAS COUNTY OFFICIAL RECORDS

60' ROADWAY EASEMENT FILED IN BOOK 184 AT PAGE 434 IN PLUMAS COUNTY OFFICIAL RECORDS

60' ROADWAY EASEMENT FILED IN BOOK 184 AT PAGE 479 IN PLUMAS COUNTY OFFICIAL RECORDS

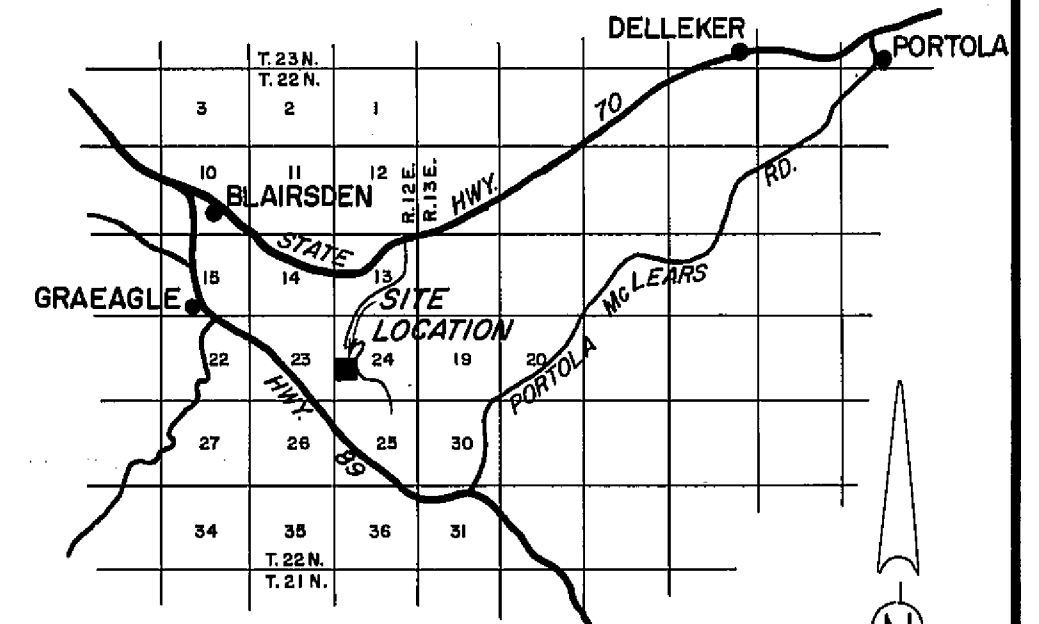
WEST 1/4 CORNER SECTION 24

WEST LINE OF S.W. 1/4 OF SECTION 24

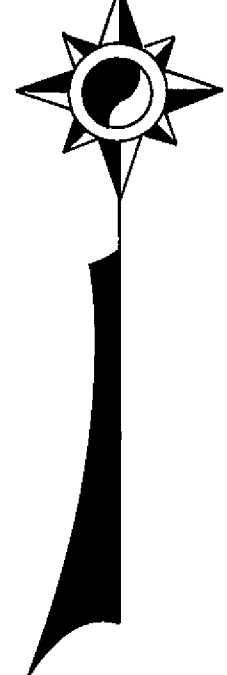


60' ROADWAY EASEMENT:

A	N 00° 26' 20" W	23.91'
B	N 50° 48' 21" E	33.71'
C	N 60° 03' 29" E	104.29'
D	N 52° 26' 06" E	105.51'
E	S 55° 27' 22" E	140.31'
F	S 75° 07' 33" E	177.10'
G	N 89° 13' 39" E	180.80'
H	N 36° 58' 69" E	263.46'
J	N 49° 24' 51" E	169.60'
K	N 33° 31' 36" E	73.99'
L	N 33° 31' 36" E	492.40'
M	S 81° 38' 03" E	103.10'
N	S 22° 02' 57" E	159.50'
O	N 10° 11' 44" W	468.62'
P	S 20° 30' 02" W	188.86'
Q	S 23° 18' 25" W	38.71'
R	S 08° 25' 58" W	91.30'
S	S 00° 35' 23" E	166.66'
T	S 42° 58' 42" E	44.50'
U	S 42° 58' 42" E	58.06'
V	N 82° 09' 49" E	134.66'
W	S 83° 01' 47" E	229.58'
X	S 26° 33' 54" E	31.31'
Y	S 09° 56' 52" W	167.67'
Z	S 45° 48' 29" W	115.94'
AA	S 36° 28' 42" W	277.38'
BB	S 52° 21' 48" W	165.65'
CC	S 89° 34' 10" W	393.00'
DD	S 28° 54' 09" W	84.13'
EE	S 17° 05' 12" E	158.77'
FF	S 19° 36' 21" W	73.23'
GG	S 89° 41' 02" W	229.04'
HH	N 51° 01' 09" W	56.88'
	N 48° 54' 17" W	101.08'



LOCATION MAP SCALE: 1" = 2 1/2 Miles



NOTES

THE BASIS OF BEARING IS THE WEST LINE OF THE S.W. 1/4 OF SECTION 24, T.22N., R.12E., M.D.B.&M., GIVEN AS N00°26'20"W ON THAT CERTAIN AMENDED RECORD OF SURVEY MAP FILED APRIL 4, 1967, IN BOOK 3 OF RECORD OF SURVEYS AT PAGE 84 IN THE PLUMAS COUNTY OFFICIAL RECORDS.

TOTAL ACREAGE 39.47 AC.

SURVEYOR'S CERTIFICATE

THIS MAP WAS PREPARED BY ME OR UNDER MY DIRECTION AND WAS COMPILED FROM RECORD DATA IN CONFORMANCE WITH THE REQUIREMENTS OF THE SUBDIVISION MAP ACT AT THE REQUEST OF JOSEPHINE JOHNSON IN JULY, 1968. I HEREBY CERTIFY THAT IT CONFORMS TO THE APPROVED TENTATIVE MAP AND THE CONDITIONS OF APPROVAL THEREOF, AND THAT ALL PROVISIONS OF APPLICABLE STATE LAW AND LOCAL ORDINANCES HAVE BEEN COMPLIED WITH.

Edward P. Norris EDWARD P. NORRIS, L.S. 2846

RECORDER'S CERTIFICATE

FILED THIS 12th DAY OF November, 1968, AT 4:30 P.M. IN BOOK 2 OF PARCEL MAPS AT PAGE 49 AT THE REQUEST OF WALTER B. GRIMES. RECORDING NO. 2474.

FEE 5.00

Signature of Walter B. Grimes, COUNTY RECORDER

BY DEPUTY

COUNTY ENGINEER'S CERTIFICATE

THIS MAP HAS BEEN EXAMINED FOR CONFORMANCE WITH THE REQUIREMENTS OF SECTION 11575 OF THE SUBDIVISION MAP ACT THIS 1st DAY OF November, 1968.

Signature of Darrell P. Payne, DARRELL P. PAYNE, R.C.E. 8596

LEGEND

- COMPUTED CORNER LOCATION
- CORNER AS SHOWN ON AMENDED R/S MAP IN BK. 3, PG. 84, PLUMAS CO. O/R
- SET 3/4" IRON PIPE MARKED RCE 7294

PARCEL MAP THE N.W. 1/4 OF THE S.W. 1/4 OF SECTION 24, T.22N., R.12E., M.D.B.&M. PLUMAS COUNTY, CALIFORNIA

MAP OF THE LANDS OF JOSEPHINE JOHNSON SCALE: 1" = 200' JULY, 1968

WALTER B. GRIMES ASSOC. CIVIL ENGINEERS & LAND SURVEYORS 1356 MANGROVE AVENUE, CHICO, CALIFORNIA