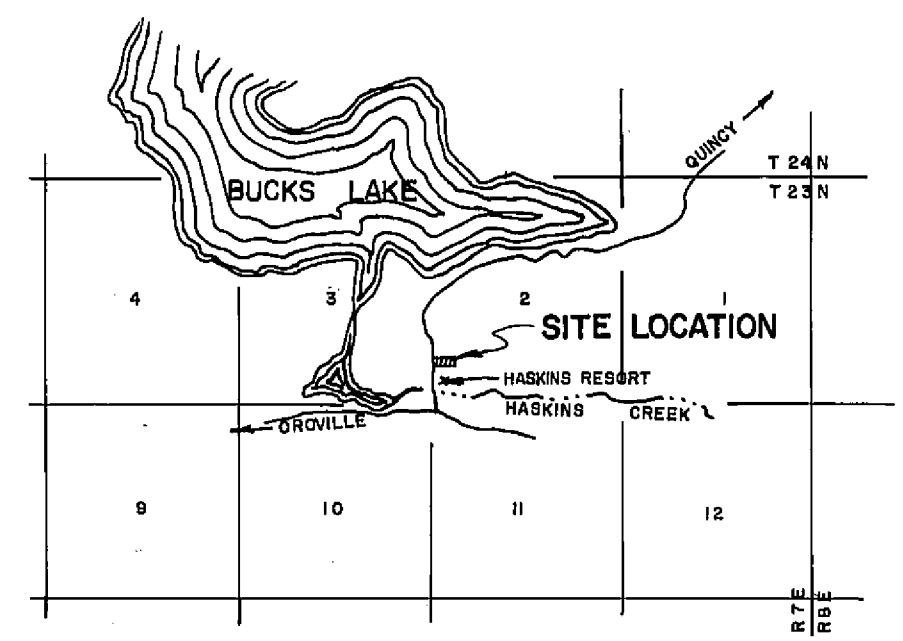
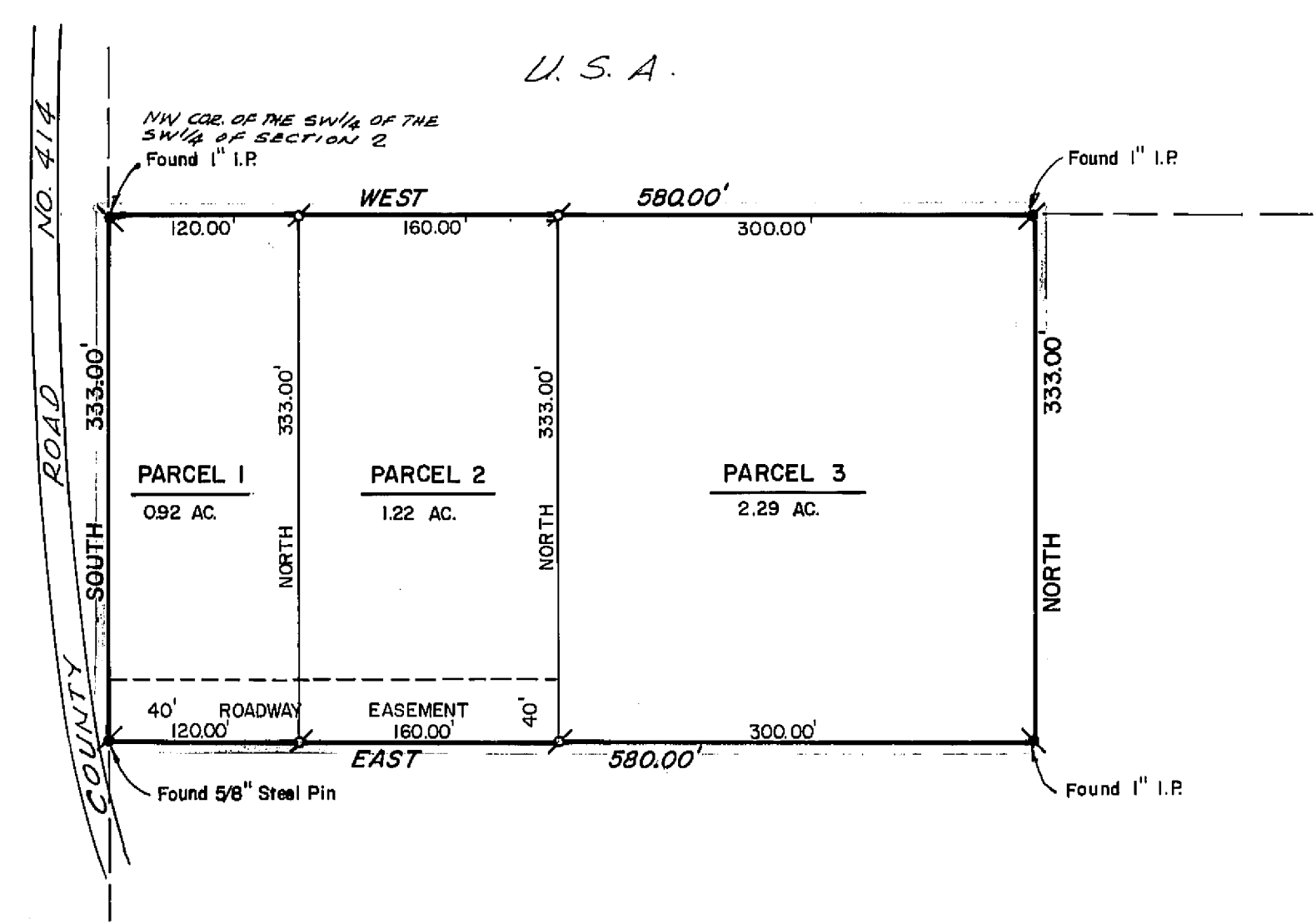


P.G. # E.



LOCATION MAP  
SCALE 1"=1 MILE

NOTES.

CORNER AS NOTED  
SET 3/4" I.P. TAGGED R.C.E. 13328  
THE BASIS OF BEARING IS THE WEST LINE OF THE SW 1/4 OF THE SW 1/4 OF SECTION 2, T.23N, R.7E, M.D.B.&M. GIVEN AS SOUTH IN BOOK 171 AT PAGE 665, PLUMAS COUNTY OFFICIAL RECORDS.

RECORDERS CERTIFICATE.

FILED FOR RECORD THIS 31<sup>ST</sup> DAY OF December, 1968, AT 11:52 AM  
IN BOOK 2 OF PARCEL MAPS AT PAGE 60 AT THE REQUEST OF  
WALTER B. GRIMES, RECORDING NO. 2998.  
FEE \$ 5.00  
\_\_\_\_\_  
COUNTY RECORDER  
\_\_\_\_\_  
DEPUTY

SURVEYORS CERTIFICATE.

THIS MAP WAS PREPARED BY ME OR UNDER MY DIRECTION AND WAS COMPILED FROM RECORD DATA IN CONFORMANCE WITH THE REQUIREMENTS OF THE SUBDIVISION MAP ACT AT THE REQUEST OF BLUE CHIP MOTELCO, A NEVADA CORPORATION IN DECEMBER, 1968. I HEREBY CERTIFY THAT IT CONFORMS TO THE APPROVED TENTATIVE MAP AND THE CONDITIONS OF APPROVAL THEREOF, AND THAT ALL PROVISIONS OF APPLICABLE STATE LAW AND LOCAL ORDINANCES HAVE BEEN COMPLIED WITH.

\_\_\_\_\_  
DONALD C. MAJOR R.C.E. 13328

COUNTY ENGINEERS CERTIFICATE.

THIS MAP HAS BEEN EXAMINED FOR CONFORMANCE WITH THE REQUIREMENTS OF SECTION 11575 OF THE SUBDIVISION MAP ACT THIS 31<sup>ST</sup> DAY OF Dec, 1968  
\_\_\_\_\_  
DARRELL P. PAYNE, R.C.E. 6596

PARCEL MAP  
A PORTION OF THE S.W. 1/4 OF  
SECTION 2, T.23N, R.7E., M.D.B.&M.  
PLUMAS COUNTY, CALIFORNIA

MAP OF THE LANDS OF  
BLUECHIP MOTELCO  
A NEVADA CORPORATION

SCALE 1"= 100'

DECEMBER, 1968

WALTER B. GRIMES AND ASSOC.  
CIVIL ENGINEERS & LAND SURVEYORS  
1356 MANGROVE AVENUE, CHICO, CALIFORNIA