

NOTES

The Basis of Bearing is by Solar Observation.

Total Acreage 856.86 AC.

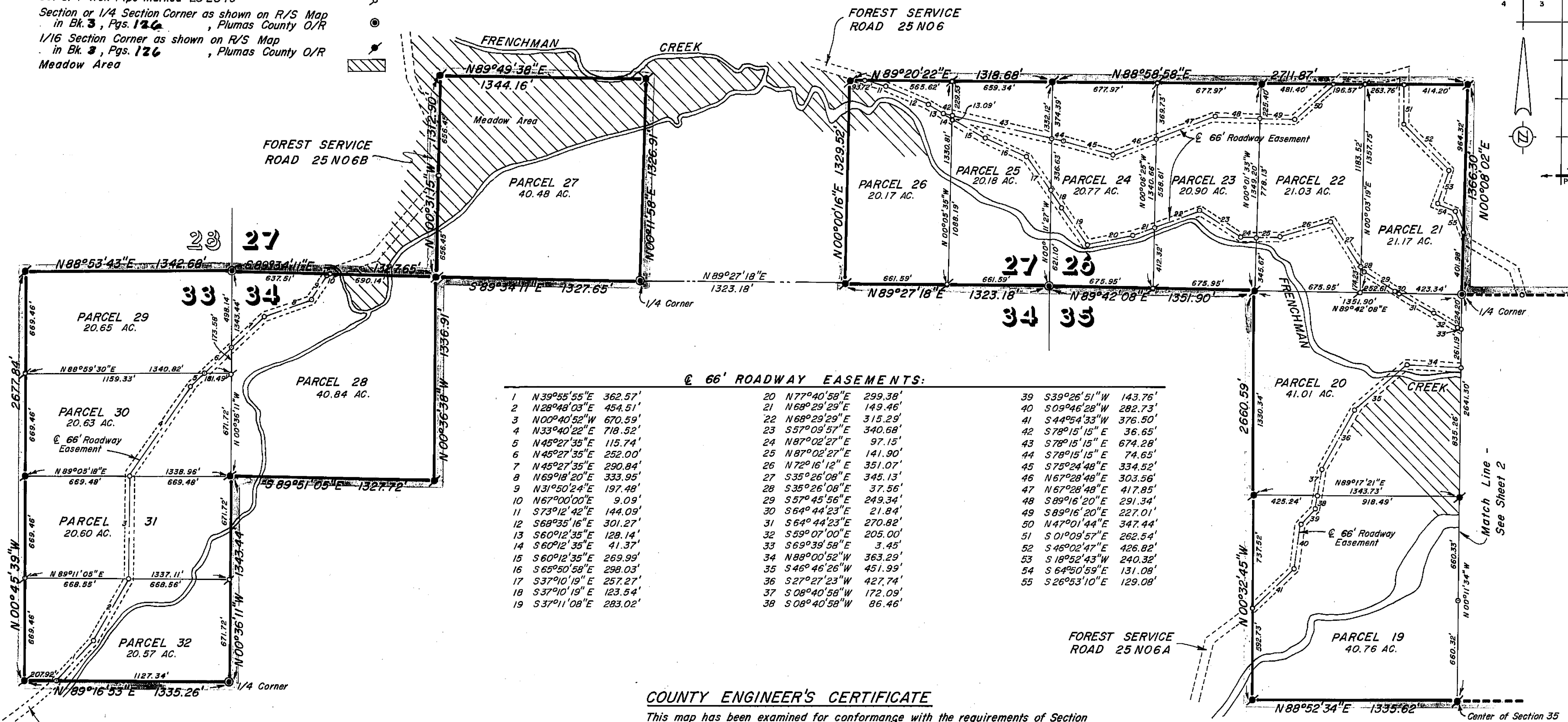
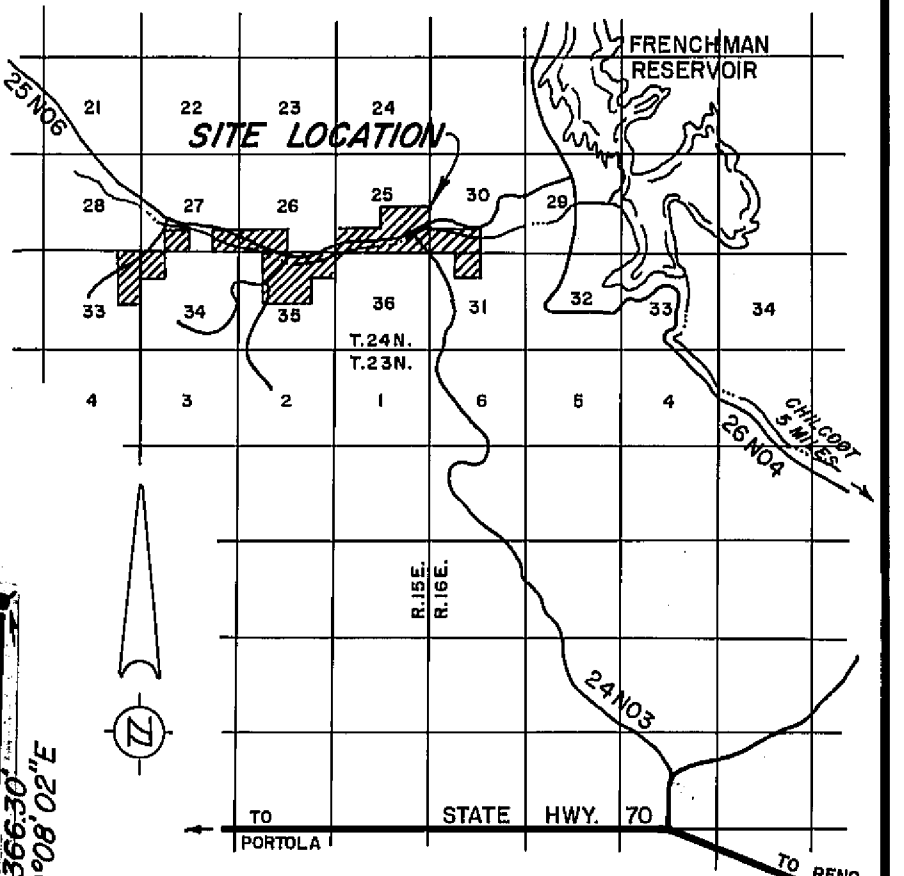
LEGEND

Computed Corner Location

Set 3/4" Iron Pipe marked LS 2846

Section or 1/4 Section Corner as shown on R/S Map in Bk. 3, Pgs. 126, Plumas County O/R

1/16 Section Corner as shown on R/S Map in Bk. 3, Pgs. 126, Plumas County O/R Meadow Area



66' ROADWAY EASEMENTS:

1 N 39°55'55"E 362.57'	20 N 77°40'58"E 299.38'	39 S 39°26'51"W 143.76'
2 N 28°48'03"E 454.51'	21 N 68°29'29"E 149.46'	40 S 09°46'28"W 282.73'
3 N 00°40'52"W 670.59'	22 N 68°29'29"E 315.29'	41 S 44°54'33"W 376.50'
4 N 33°40'22"E 718.52'	23 S 57°09'57"E 340.68'	42 S 78°15'15"E 36.65'
5 N 45°27'35"E 115.74'	24 N 87°02'27"E 97.15'	43 S 78°15'15"E 674.28'
6 N 45°27'35"E 252.00'	25 N 87°02'27"E 141.90'	44 S 78°15'15"E 74.65'
7 N 45°27'35"E 290.84'	26 N 72°16'12"E 351.07'	45 S 75°24'48"E 334.52'
8 N 69°18'20"E 333.95'	27 S 35°26'08"E 345.13'	46 N 67°28'48"E 303.56'
9 N 31°50'24"E 197.48'	28 S 35°26'08"E 37.56'	47 N 67°28'48"E 417.85'
10 N 67°00'00"E 9.09'	29 S 57°45'56"E 249.34'	48 S 89°16'20"E 291.34'
11 S 73°12'42"E 144.09'	30 S 64°44'23"E 21.84'	49 S 89°16'20"E 227.01'
12 S 68°35'16"E 301.27'	31 S 64°44'23"E 270.82'	50 N 47°01'44"E 347.44'
13 S 60°12'35"E 128.14'	32 S 59°07'00"E 205.00'	51 S 01°09'57"E 262.54'
14 S 60°12'35"E 41.37'	33 S 69°39'58"E 3.45'	52 S 46°02'47"E 426.82'
15 S 60°12'35"E 269.99'	34 N 88°00'52"W 363.29'	53 S 18°52'43"W 240.32'
16 S 65°50'58"E 298.03'	35 S 46°46'26"W 451.99'	54 S 64°50'59"E 131.08'
17 S 37°10'19"E 257.27'	36 S 27°27'23"W 427.74'	55 S 26°53'10"E 129.08'
18 S 37°10'19"E 123.54'	37 S 08°40'58"E 172.05'	
19 S 37°11'08"E 283.02'	38 S 08°40'58"W 86.46'	

COUNTY ENGINEER'S CERTIFICATE
 This map has been examined for conformance with the requirements of Section 11575 of the Subdivision Map Act this 30th day of January, 1969.

Darrell P. Payne
 DARRELL P. PAYNE, R.C.E. 8596

SURVEYOR'S CERTIFICATE
 This map was prepared by me or under my direction and is based upon a field survey and compiled from record data in conformance with the requirements of the Subdivision Map Act at the request of Theodore W. Ramelli in January, 1969. I hereby certify that it conforms to the approved Tentative Map and the conditions of approval thereof, and that all provisions of applicable state law and local ordinances have been complied with.

Edward P. Norris
 EDWARD P. NORRIS, L.S. 2846

RECORDER'S CERTIFICATE
 Filed this 30th day of January, 1969, at 4:31 P.M. in Book 2 of Parcel Maps at pages 64-65 at the request of Walter B. Grimes. Recording No. 3243.

Fee 7⁰⁰
Walter B. Grimes
 County Recorder
 By _____ Deputy

PARCEL MAP
 A PORTION OF SECTIONS 25, 26, 27, 33, 34, & 35, T. 24N., R. 15E., & A PORTION OF SECTIONS 30 & 31, T. 24N., R. 16E., M.D.B. & M. PLUMAS COUNTY, CALIFORNIA

MAP OF THE LANDS OF
THEODORE W. RAMELLI
 SCALE: 1" = 500' JANUARY, 1969

G WALTER B. A
RIMES & ASSOC.
 CIVIL ENGINEERS & LAND SURVEYORS
 1356 MANGROVE AVENUE, CHICO, CALIFORNIA

2PM 64