

**SURVEYOR'S CERTIFICATE**

This map was prepared by me or under my direction (and is based upon a field survey) in conformance with the requirements of the Subdivision Map Act at the request of Clyde Stockton Jan. 1969. I hereby certify that it conforms to the approved tentative map and the conditions of approval thereof, that all provisions of applicable State Law and local ordinances have been complied with

*Marcus J. McBeen sr.*  
Marcus J. McBeen sr. L.S.#2702

**COUNTY SURVEYOR'S CERTIFICATE**

This map has been examined this 17<sup>th</sup> day of April 1969 for conformance with the requirements of Sect. 11575 of the Subdivision Map Act

*Darrell P. Payne*  
Darrell P. Payne R.C.E. 8596  
Plumas County Surveyor

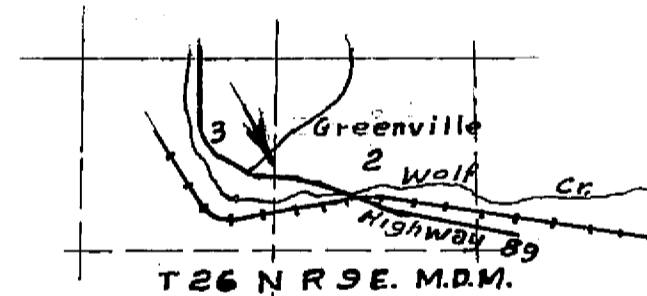
#3863

**RECORDER'S CERTIFICATE**

Filed this 16<sup>th</sup> day of April 1969 at 3:30 P.M. in Book 2 of Parcel Maps at page 71 at the request of Marcus J. McBeen sr.

*See 500*

*Ida Hogan Gronvold*  
Ida Hogan Gronvold  
Plumas County Recorder  
By *[Signature]*, Deputy

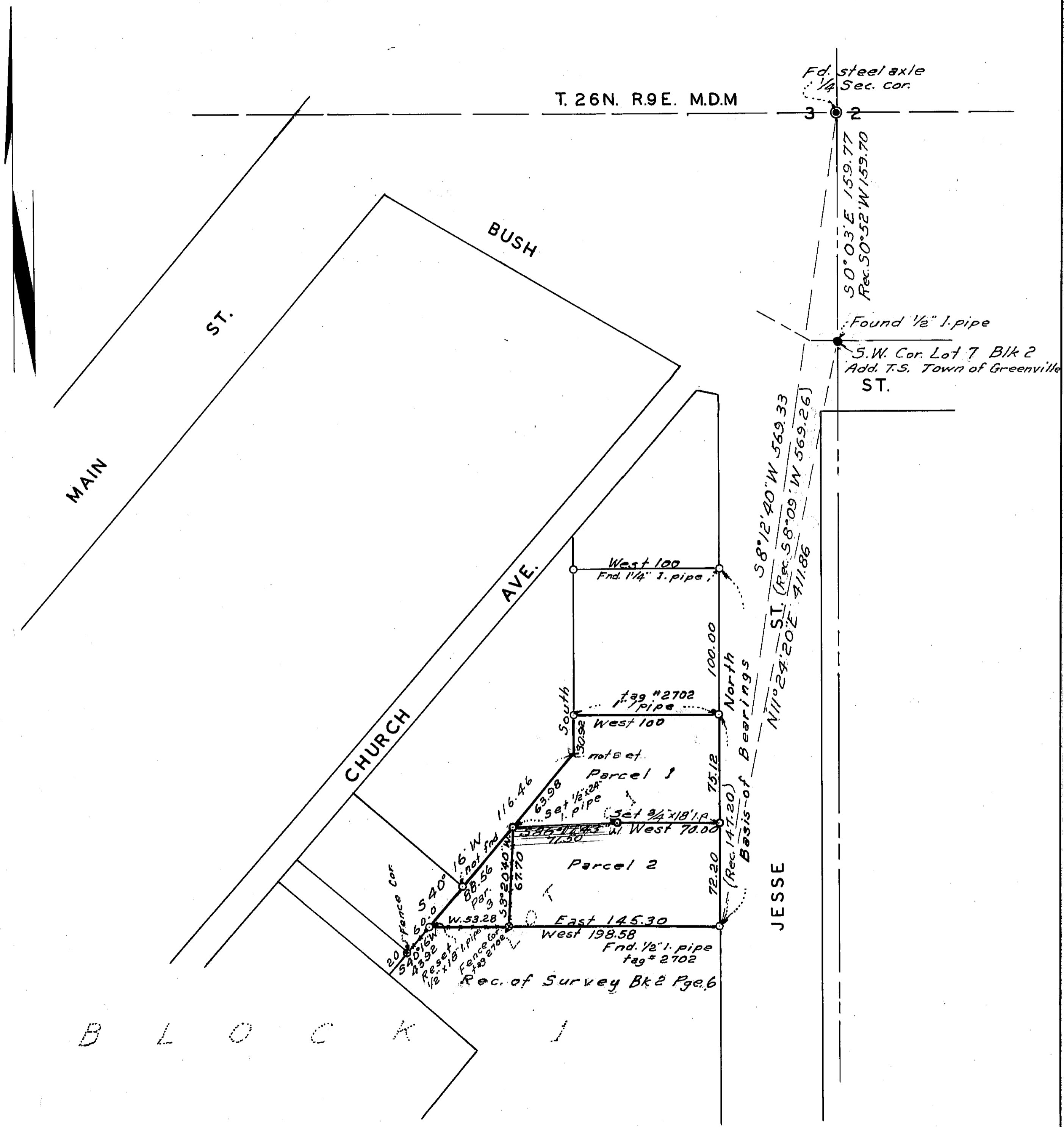


LOCATION MAP  
Scale 1" = 1 Mile

**PARCEL MAP**

LANDS OF I.O. HARSIN  
A PORTION OF LOT 1 BLOCK 1  
TOWN OF GREENVILLE  
PLUMAS COUNTY CALIF.

SCALE 1" = 50'



B L O C K J