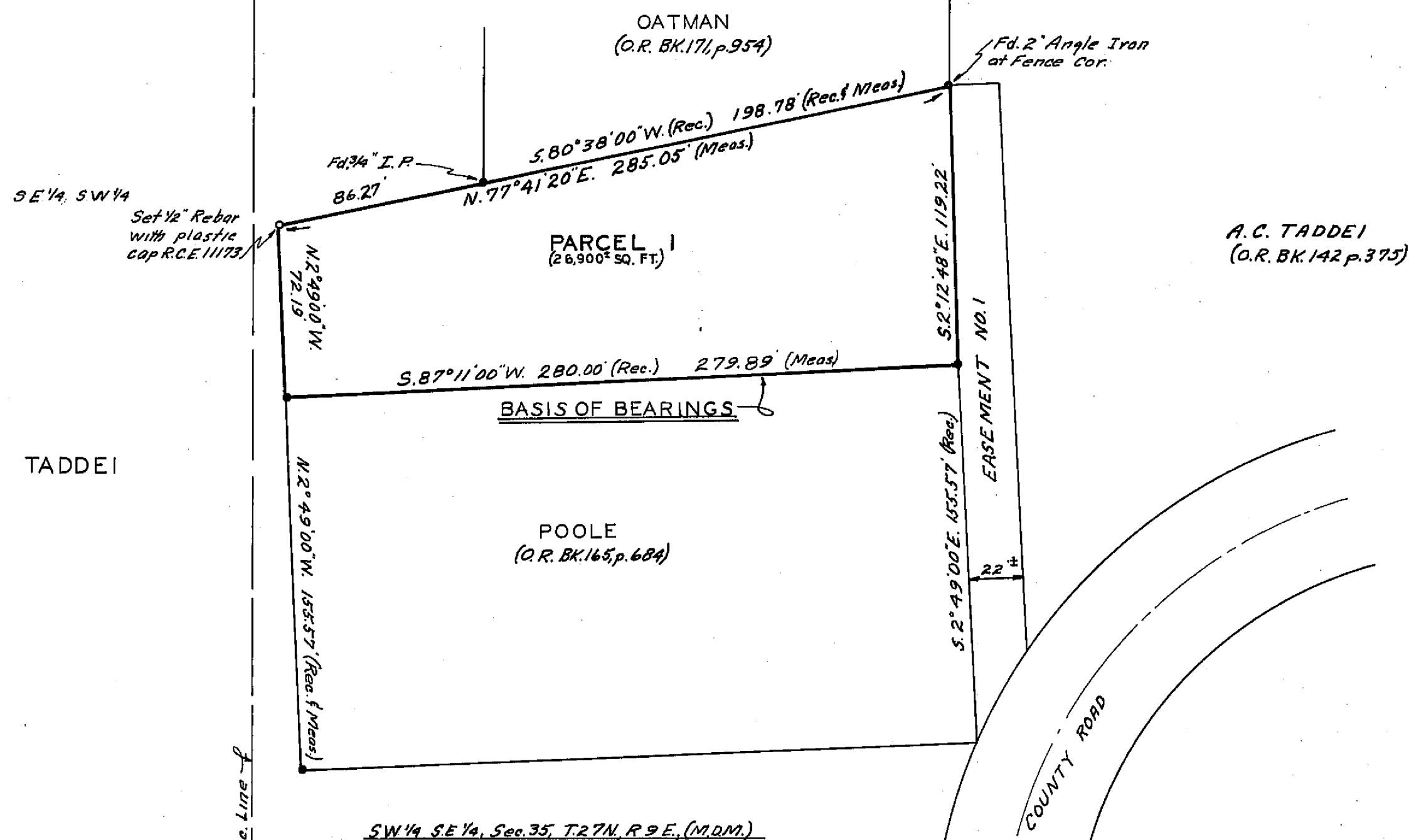
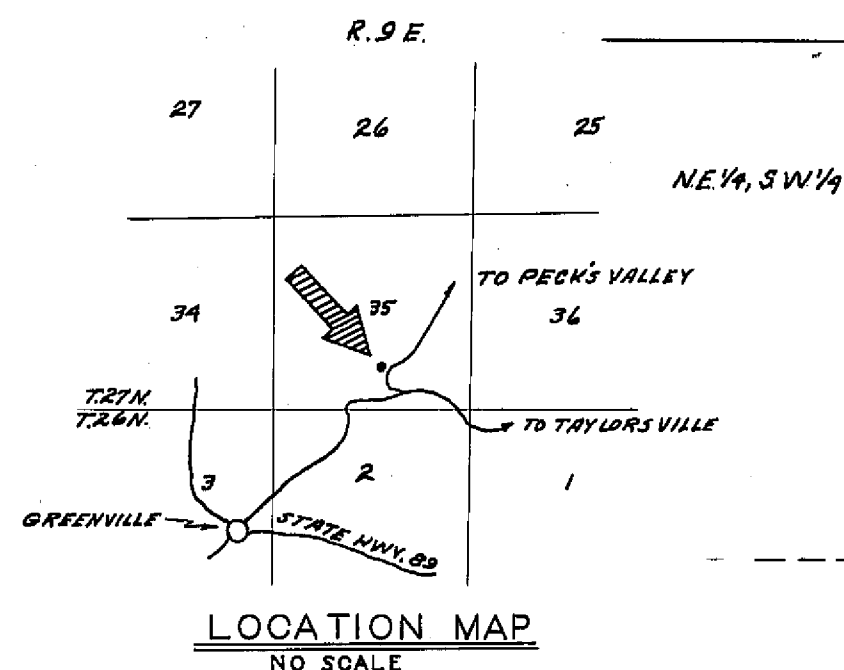


R/S BK 2, p. 35 & P.M. BK 1, p. 85



- LEGEND**
- o Set monuments as noted
 - Found monuments as noted
 - Fd. Found
 - Meas. Measured
 - Rec. Record (from deed, Record of Survey, etc.)
 - Rebar Reinforcing Steel Bar
 - R/S Record of Survey
 - Bk. Book
 - p. Page
 - P.M. Parcel Map
 - R.C.E. Registered Civil Engineer
 - I.P. Iron Pipe

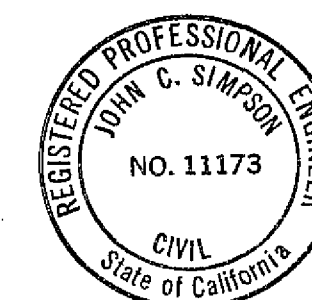
EASEMENT NO. 1

Grant of easement to be executed from Delfina Taddei to Poole covering non-exclusive use of this easement by Poole for roadway, utility, drainage and incidental purposes.

SCALE 1" = 50'

SURVEYOR'S CERTIFICATE

This map was prepared by me or under my direction (and is based upon a field survey) in conformance with the requirements of the Subdivision Map Act at the request of Delfina Taddei, April 1, 1969. I hereby certify that it conforms to the approved tentative map and the conditions of approval thereof; that all provisions of applicable state law and local ordinances have been complied with.



John C. Simpson
JOHN C. SIMPSON
R.C.E. 11173

PARCEL MAP
OF
SUBDIVISION OF ONE PARCEL
A PORTION OF THE LANDS OF
DELFINA TADDEI
RECORD OWNER
IN
PLUMAS COUNTY-CALIFORNIA

RECORDER'S CERTIFICATE

Filed this 2nd day of May, 1969,
at 11:25 A.M. in Book 2 of Parcel Maps at
Page 73 at the request of John C. Simpson.

Ida Hogan Gronvold
Ida Hogan Gronvold
Plumas County Recorder
By [Signature], Deputy
Fee \$5.00
File No. 3979

COUNTY SURVEYOR'S CERTIFICATE

This map has been examined this 30th day
of April, 1969, for conformance with
the requirements of Section 11575 of the Sub-
division Map Act.

Darrell P. Payne
Darrell P. Payne
Plumas County Surveyor

JOHN C. SIMPSON, P.E.
CIVIL ENGINEER
QUINCY-CALIFORNIA