

**SURVEYOR'S CERTIFICATE**

This map was prepared by me or under my direction and is based upon a field survey and compiled from record data in conformance with the requirements of the Subdivision Map Act at the request of Donald K. & May I. Lee in July, 1969. I hereby certify that it conforms to the approved Tentative Map and the conditions of approval thereof, that all provisions of applicable state law and local ordinances have been complied with.

*Max L. Albert*  
MAX L. ALBERT L.S. 3336

**COUNTY ENGINEER'S CERTIFICATE**

This map has been examined for conformance with the requirements of Section 11575 of the Subdivision Map Act this 27<sup>th</sup> day of August

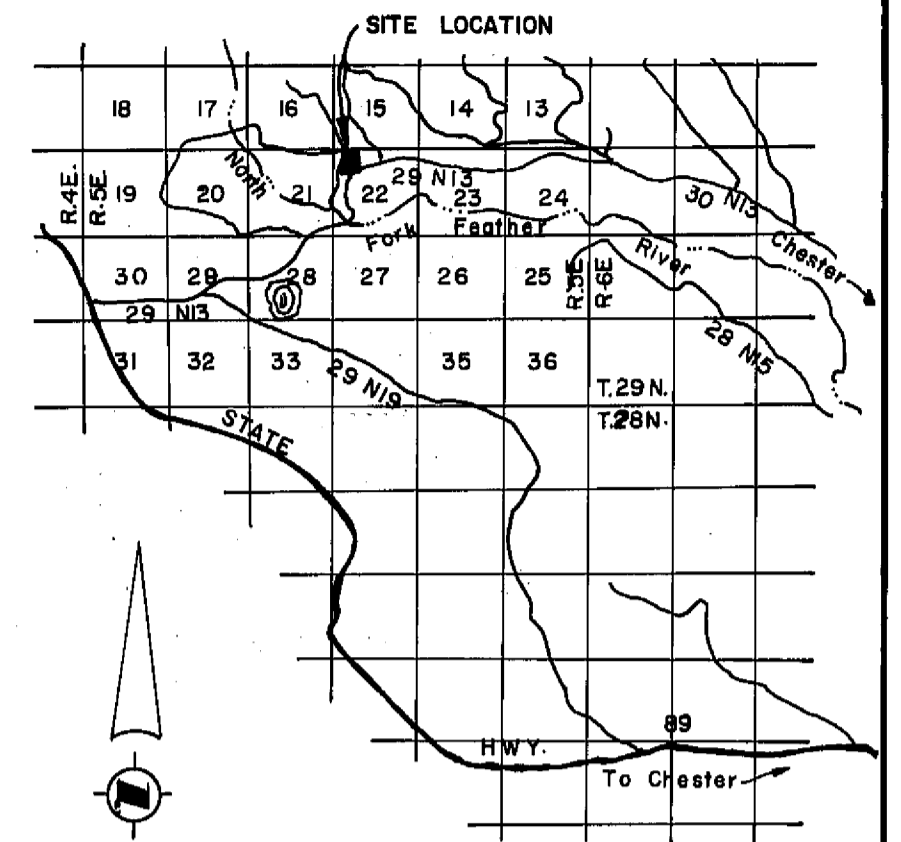
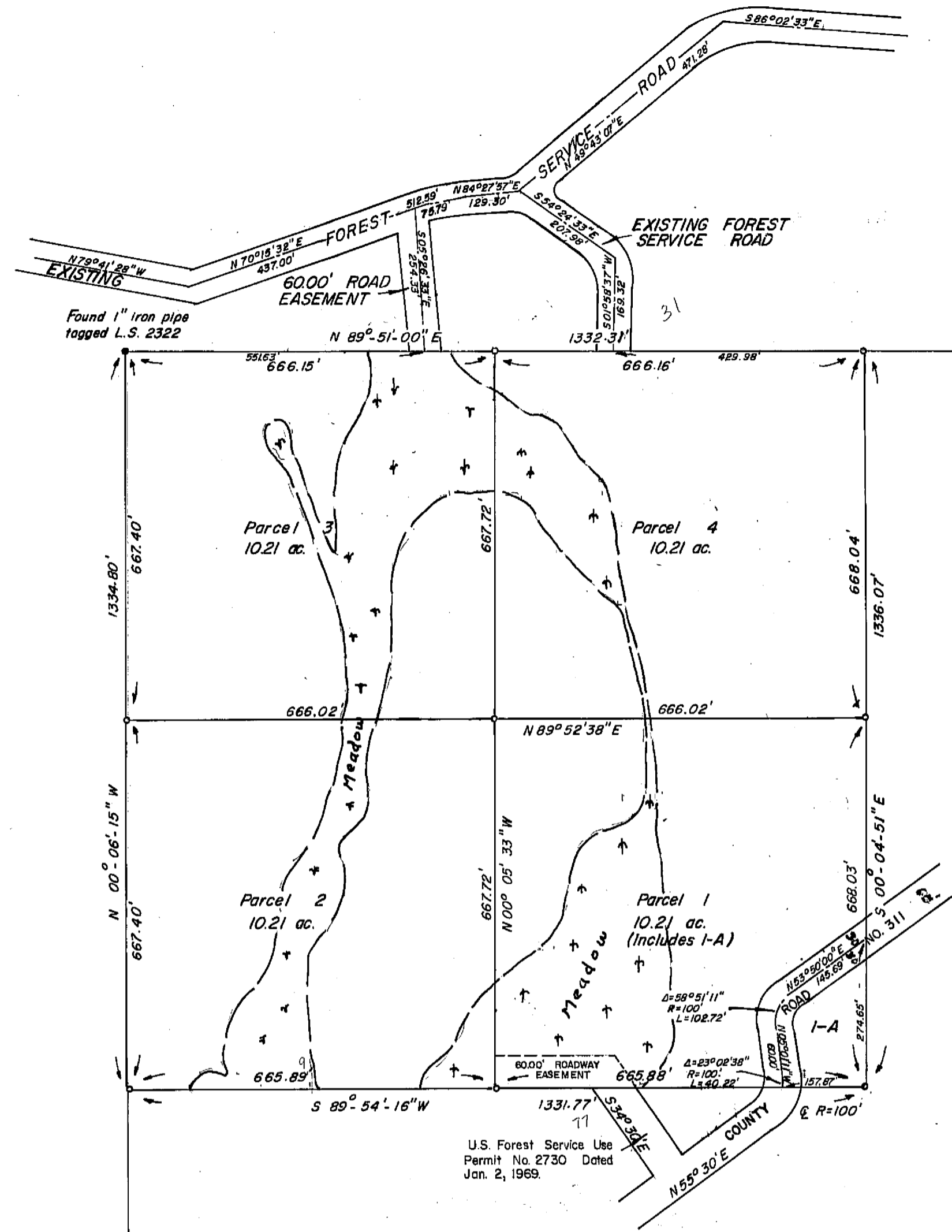
*Darrell P. Payne*  
DARRELL P. PAYNE R.C.E. 8596

**RECORDER'S CERTIFICATE**

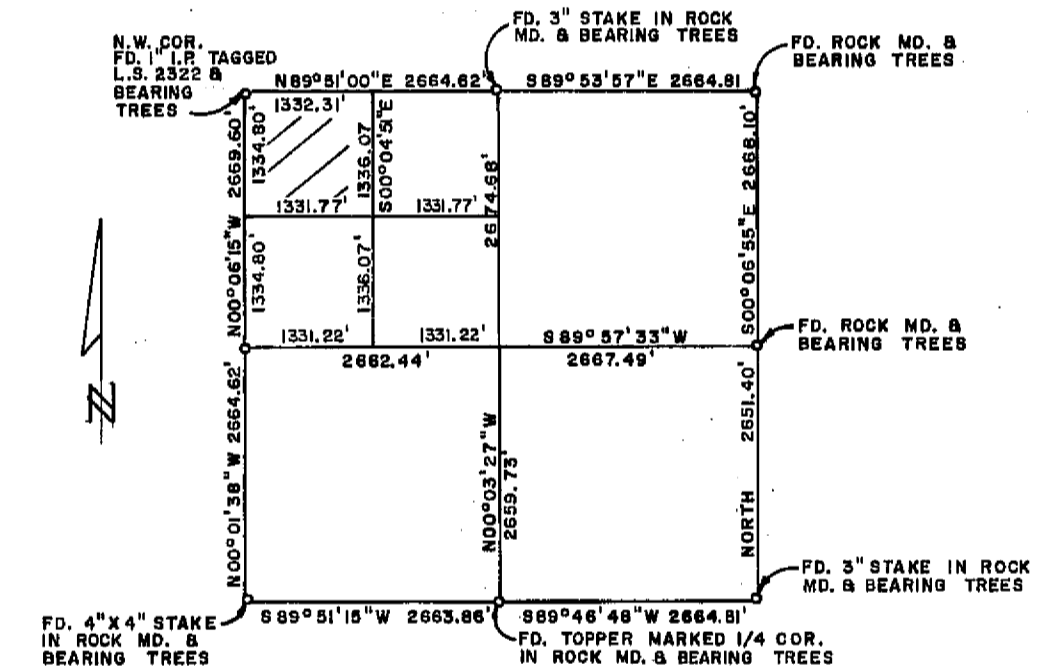
Filed this 3<sup>rd</sup> day of Sept, 1969, at 4:15 P.M. in Book 2 of Parcel Maps at page 40 at the request of Walter B. Grimes. Recording No. 1317

Fee 85<sup>00</sup>

*Walter B. Grimes*  
County Recorder  
By \_\_\_\_\_ Deputy



**LOCATION MAP**  
SCALE: 1" = 2-1/4 MI.



**SECTION BREAKDOWN**  
SCALE: 1" = 200'

**PARCEL MAP**

THE N.W. 1/4 OF THE N.W. 1/4  
OF SECTION 22, T.29N., R. 5E., M.D.B. & M.  
PLUMAS COUNTY, CALIFORNIA

MAP OF THE LANDS OF  
DONALD K. & MAY I. LEE

1" = 200'

JULY, 1969

**NOTES**

The Basis of Bearing is the east line of the southeast 1/4 of section 22 given as north on the G.L.O. notes.

Total Acreage 40.84 acres

Parcel 1-A is a portion of Parcel 1

Planning Comm. Approved subject to no habitable bldgs. or ~~leach~~ fields in areas shown as "Meadow".

**LEGEND**

- Found 1" iron pipe tagged L.S. 2322
- Set 3/4" iron pipe tagged L.S. 3336

**G** WALTER B. **A**SSOC.  
**GRIMES** & **ASSOC.**  
CIVIL ENGINEERS & LAND SURVEYORS  
1356 MANGROVE AVENUE, CHICO, CALIFORNIA

pm 2/90

(2)