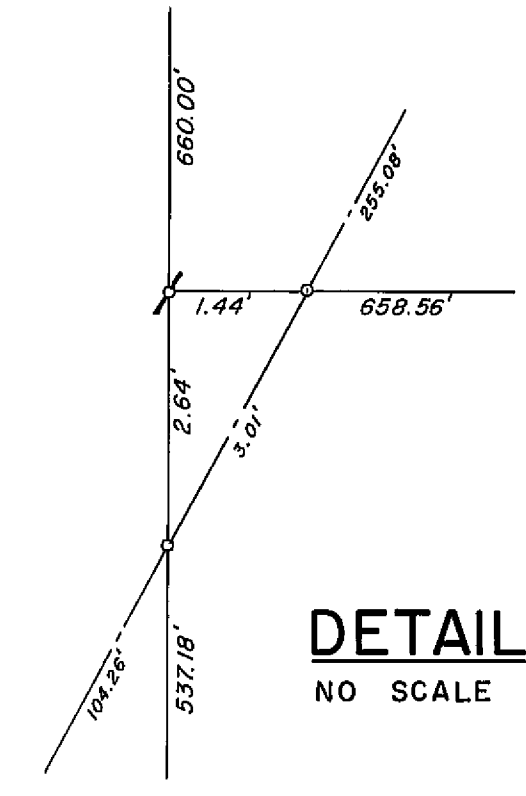


**LOCATION MAP**  
SCALE: 1" = 2-1/2 Miles



**DETAIL**  
NO SCALE

**LEGEND**  
SET CORNER  
FOUND CORNER AS SHOWN ON AMENDED R/S MAP IN BK. 3, PG. 108, PLUMAS COUNTY O/R

**NOTES**

THE BASIS OF BEARING IS THE SOUTH LINE OF PARCEL 5, GIVEN AS S 89°36'06" E ON THAT CERTAIN AMENDED RECORD OF SURVEY MAP FILED DECEMBER 26, 1967, IN BOOK 3 OF RECORD OF SURVEYS AT PAGE 108, RECORDING NO. 2695, IN THE PLUMAS COUNTY OFFICIAL RECORDS.

TOTAL ACREAGE 40.00 AC.

**SURVEYOR'S CERTIFICATE**

THIS MAP WAS PREPARED BY ME OR UNDER MY DIRECTION AND IS COMPILED FROM RECORD DATA IN CONFORMANCE WITH THE REQUIREMENTS OF THE SUBDIVISION MAP ACT AT THE REQUEST OF PAUL C. EDGINGTON IN SEPTEMBER, 1968. I HEREBY CERTIFY THAT IT CONFORMS TO THE APPROVED TENTATIVE MAP AND THE CONDITIONS OF APPROVAL THEREOF, AND THAT ALL PROVISIONS OF APPLICABLE STATE LAW AND LOCAL ORDINANCES HAVE BEEN COMPLIED WITH.

*Edward P. Norris*  
EDWARD P. NORRIS, L.S. 2846

**RECORDER'S CERTIFICATE**

FILED THIS 31<sup>st</sup> DAY OF December, 1968, AT 11:45 A.M. IN BOOK 2 OF PARCEL MAPS AT PAGE 107 AT THE REQUEST OF WALTER B. GRIMES. RECORDING NO. 3162.

FEE 5<sup>00</sup>

*Ida Hogan Gronold*  
COUNTY RECORDER

BY \_\_\_\_\_ DEPUTY

**COUNTY ENGINEER'S CERTIFICATE**

THIS MAP HAS BEEN EXAMINED FOR CONFORMANCE WITH THE REQUIREMENTS OF SECTION 11575 OF THE SUBDIVISION MAP ACT THIS 26<sup>th</sup> DAY OF December, 1968.

*Darrell P. Payne*  
DARRELL P. PAYNE, R.C.E. 8596

**PARCEL MAP**  
A PORTION OF SECTION 12,  
T. 23 N., R. 13 E., M.D.B. & M.  
PLUMAS COUNTY, CALIFORNIA

MAP OF THE LANDS OF  
**PAUL C. EDGINGTON & L.L. BALL**  
SCALE: 1" = 200' SEPTEMBER, 1968

**G** WALTER B. **A**  
RIMES & ASSOC.  
CIVIL ENGINEERS & LAND SURVEYORS  
1356 MANGROVE AVENUE, CHICO, CALIFORNIA