

This map was prepared by me or under my direction and is based upon a field survey and compiled from record data in conformance with the requirements of the Subdivision Map Act at the request of Henry Hansen in May, 1969. I hereby certify that it conforms to the approved Tentative Map and the conditions of approval thereof, and that all provisions of applicable state law and local ordinances have been complied with.

MAX L. ALBERT L.S. 3336

This map has been examined for conformance with the requirements of Section 11575 of the Subdivision Map Act this 5th day of January, 1970.

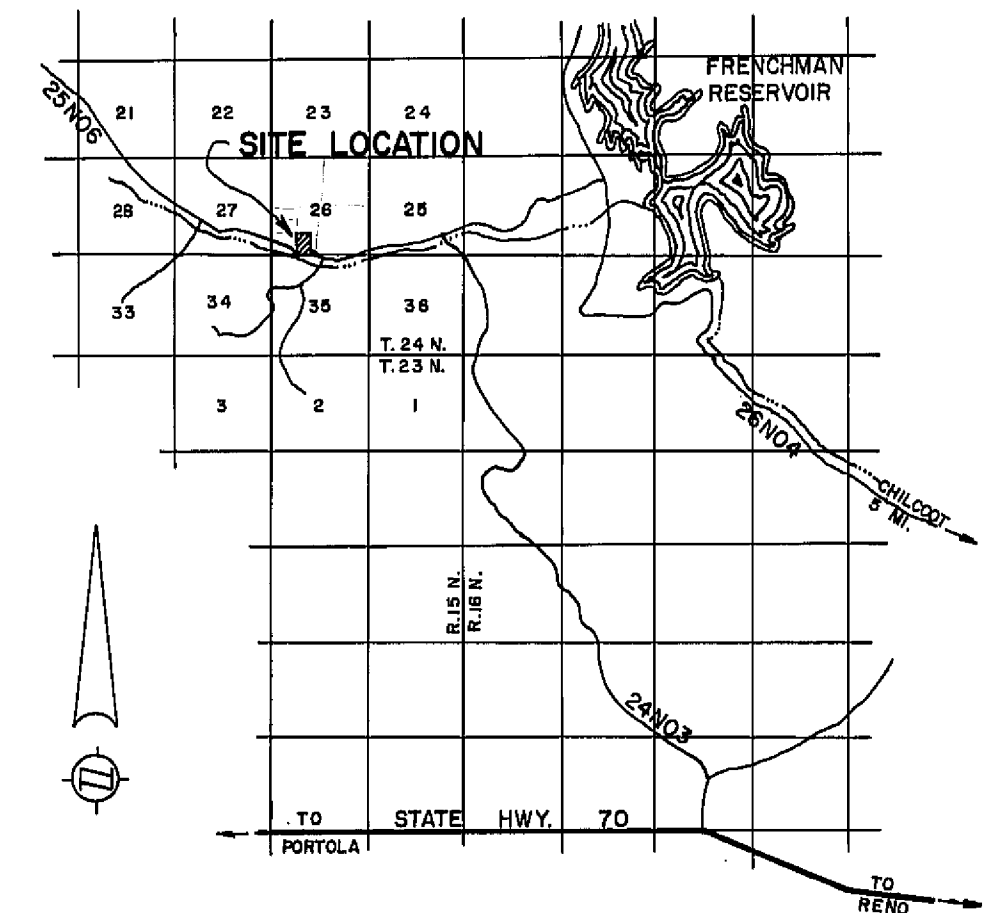
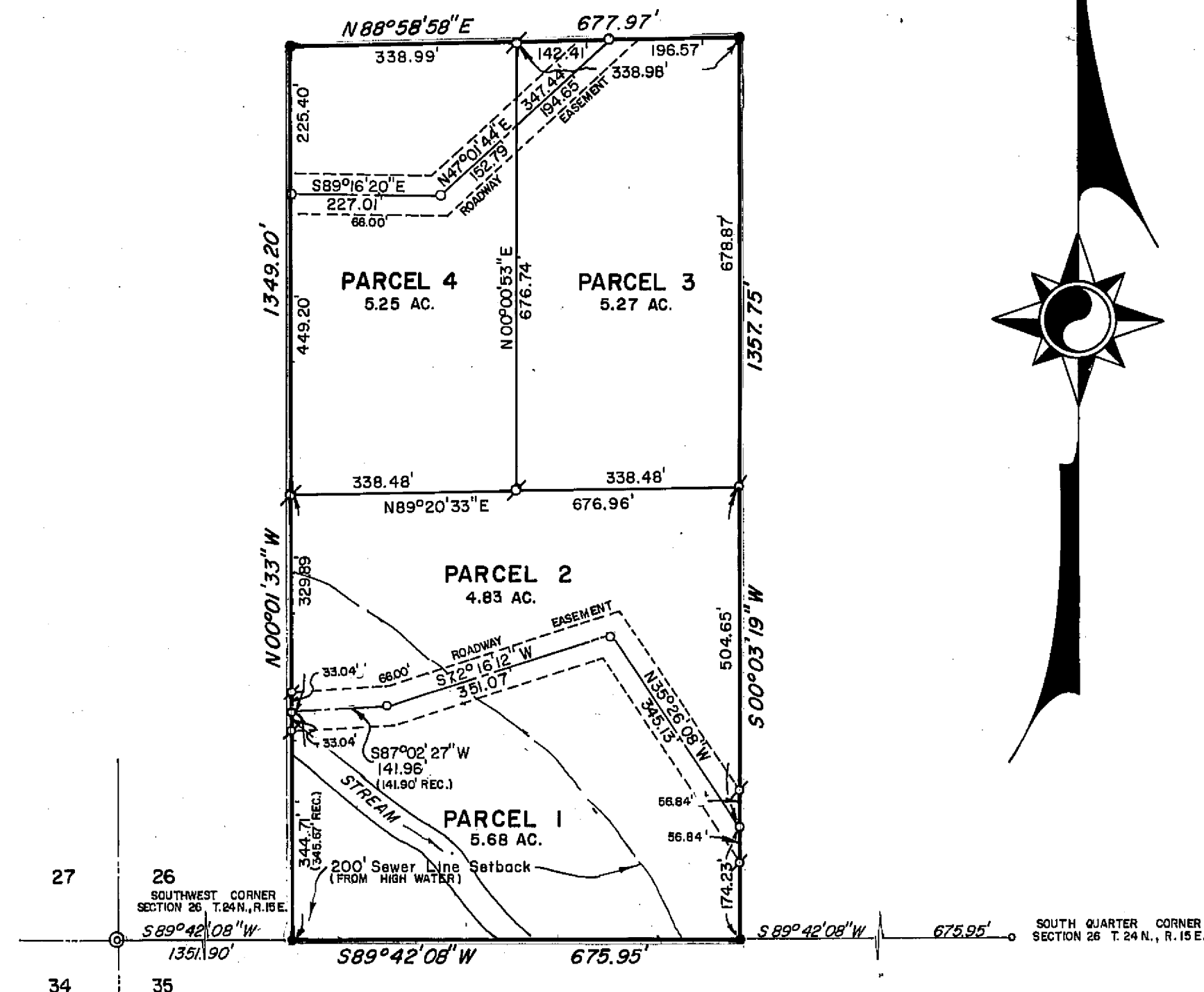
Darrell P Payne
DARRELL P. PAYNE R.C.E. 8596

Filed this 6th day of January, 1976, at 3:40 P.M. in Book 2
of Parcel Maps at page 109 at the request of Walter B. Grimes.
Recording No. 3218.

Fee \$ 5.00

Ida Hogan Gonsold
County Recorder

By _____
Deputy



LOCATION MAP

SCALE 1" = 2 Miles

The Basis of Bearing is the south line of section 26 given as N89°42'08"E on the Parcel Map filed January 30, 1969, in Book 2 of Parcel Maps at pages 64 and 65.

Zoned R-R by Plumas County Ordinance 647, Recorded in Book 186 at Page 21 of Official Records is Declaration of establishment of easements.

Found 3/4" iron pipe tagged L.S. 2846
Set 3/4" iron pipe tagged L.S. 3336
Computed corner location

PARCEL MAP
THE WEST 1/2 OF THE S.E. 1/4 OF THE S.W. 1/4
OF SECTION 26, T.24N., R.15E., M.D.B.&M.
PLUMAS COUNTY, CALIFORNIA

MAP OF THE LANDS OF
HENRY HANSEN

Being all of Parcel 22 of Parcel Map, filed in Book
2 at Page 64.

SCALE 1" = 200'

JANUARY, 1970

G **WALTER B.** **A** **SSOC.**
GRIMES &
CIVIL ENGINEERS & LAND SURVEYORS
1356 MANGROVE AVENUE, CHICO, CALIFORNIA