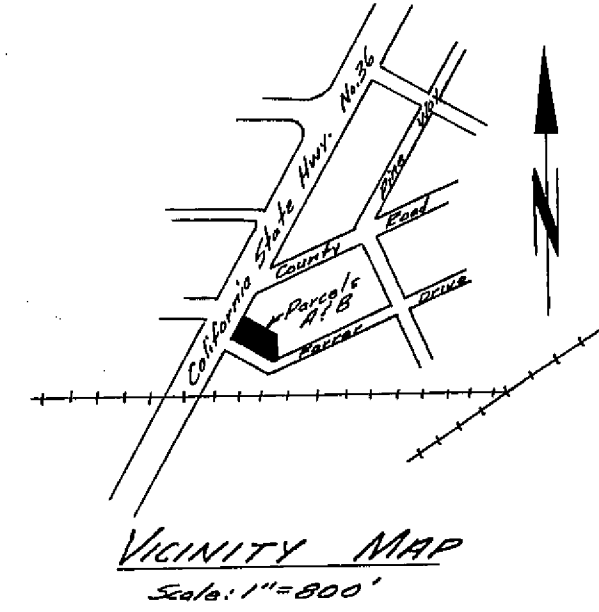


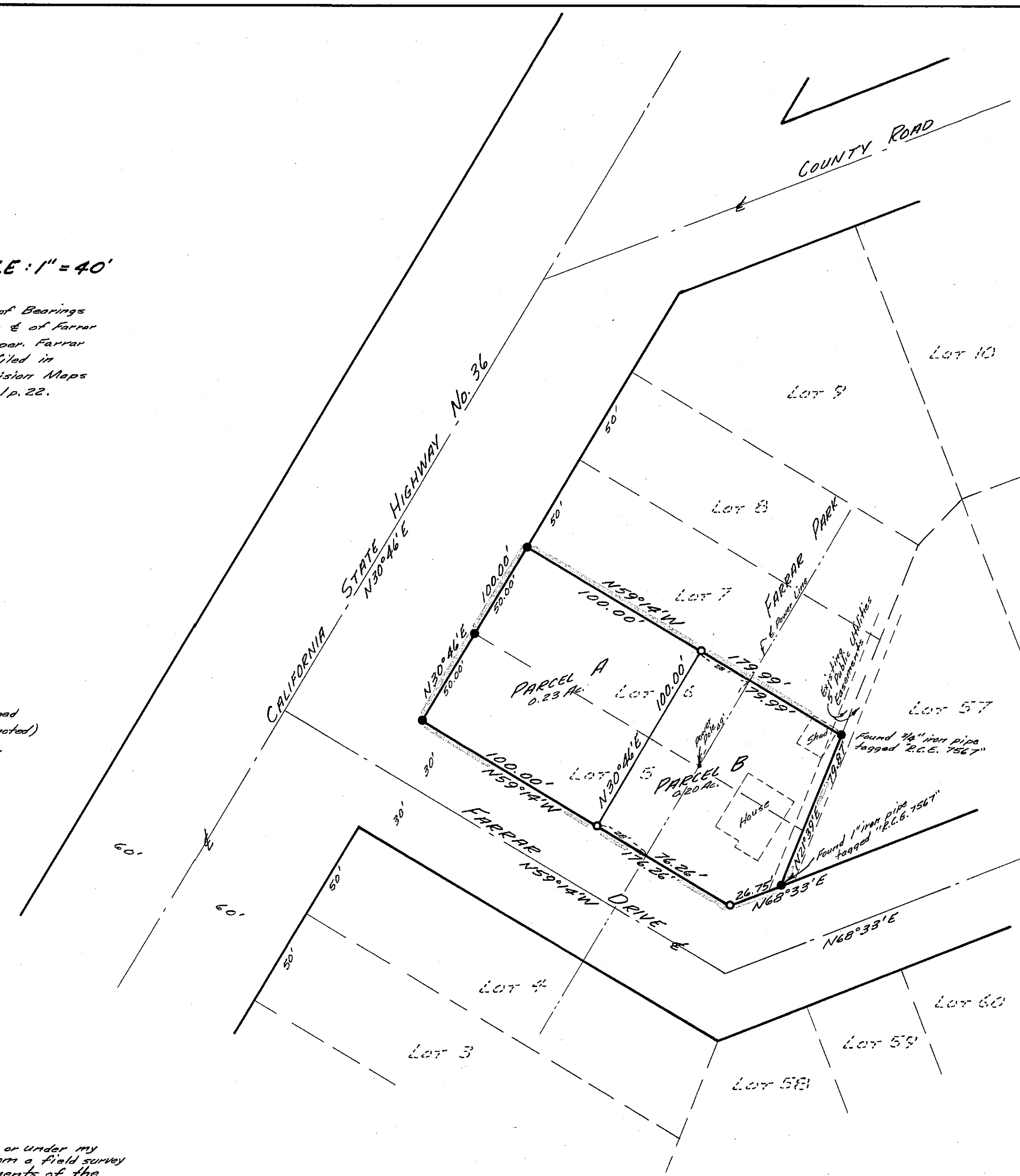
SCALE: 1" = 40'

Basis of Bearings is the ξ of Farrar Drive per Farrar Park filed in Subdivision Maps in Bk. 1 p. 22.



~ LEGEND ~

- Found 1 1/2" iron pipe tagged "R.C.E. 7567" (except as noted)
- Set 3/4" iron pipe tagged "U.S. 3202"



I, the undersigned, County Tax Collector of the County of Plumas, State of California, do hereby certify that there are no tax liens against Parcels A and B, as shown hereon, or unpaid state, county, municipal, or local taxes or special assessments collected as taxes except taxes or assessments not yet payable. Taxes or assessments which are a lien but not yet payable are estimated to be in the amount of \$265.00.

Douglas S. Redstreak
Douglas S. Redstreak, Plumas County Tax Collector

CERTIFICATES:

This map was prepared by me or under my direction, and was compiled from a field survey in conformance with the requirements of the Subdivision Map Act at the request of Ray Keeler in March, 1972. I hereby certify that it conforms to the approved tentative map and the conditions of approval thereon and that all provisions of applicable State laws and local ordinances have been complied with.

Paul E. Simpson
Paul E. Simpson, Licensed Land Surveyor No. 3202

This map has been examined this 26th day of July, 1972 for conformance with the requirements of Section 11575 of the Subdivision Map Act.

Darrell P. Payne
Darrell P. Payne, Plumas County Surveyor, R.C.E. 8596

Filed for record this 7th day of August, 1972 at 2:55 P.M. in Book 3 of Parcel Maps at Page 14 at the request of Paul E. Simpson. Fee: 5.00 File No. 1234

Dorothy Neer Marley
Dorothy Neer Marley, Plumas County Recorder

PARCEL MAP FOR RUTH HALLETT

LOTS 5 & 6 FARRAR PARK, TOWN OF CHESTER, PLUMAS COUNTY, CALIFORNIA

SCALE: 1" = 40'

PAUL E. SIMPSON & ASSOCIATES, ENGINEERS & SURVEYORS
SUSANVILLE, CALIFORNIA