

AMENDED PARCEL MAP

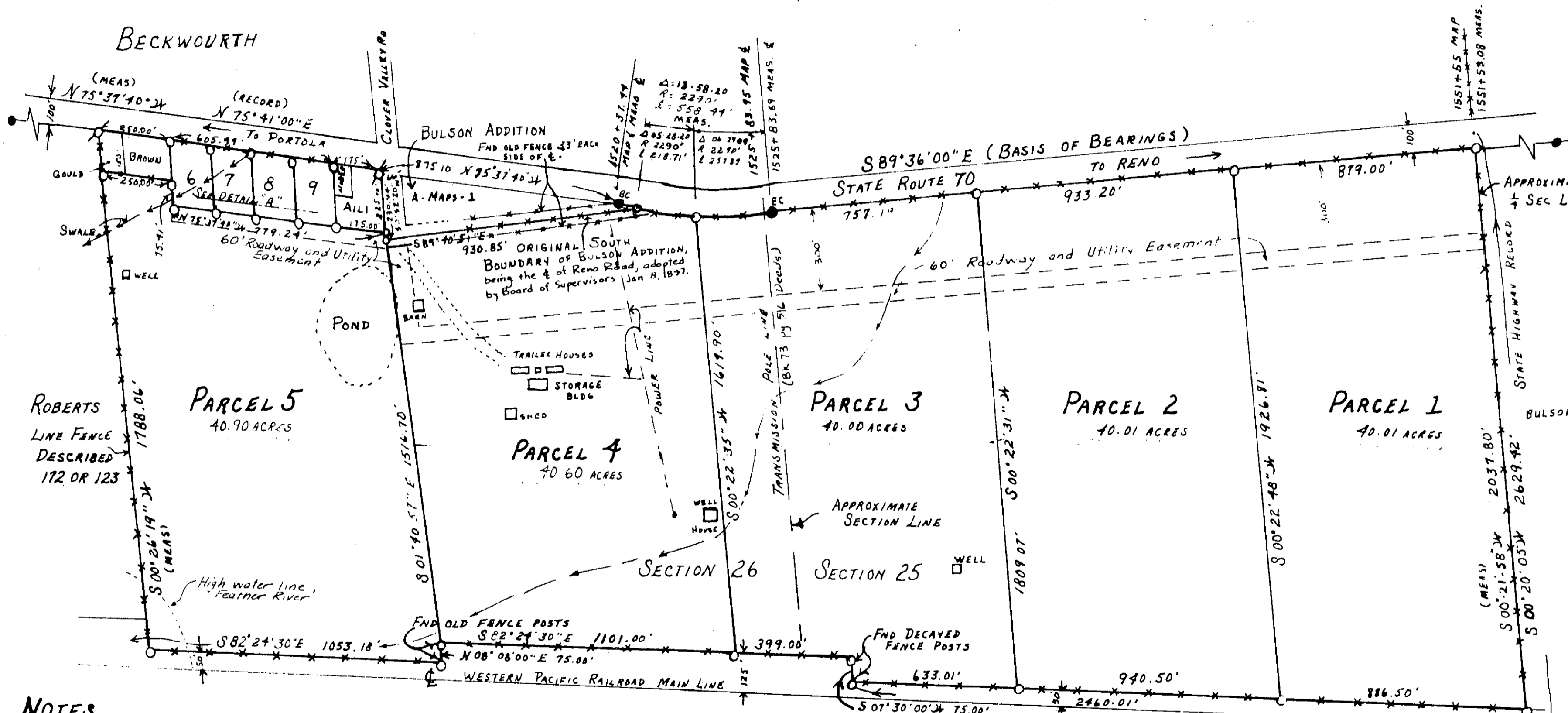
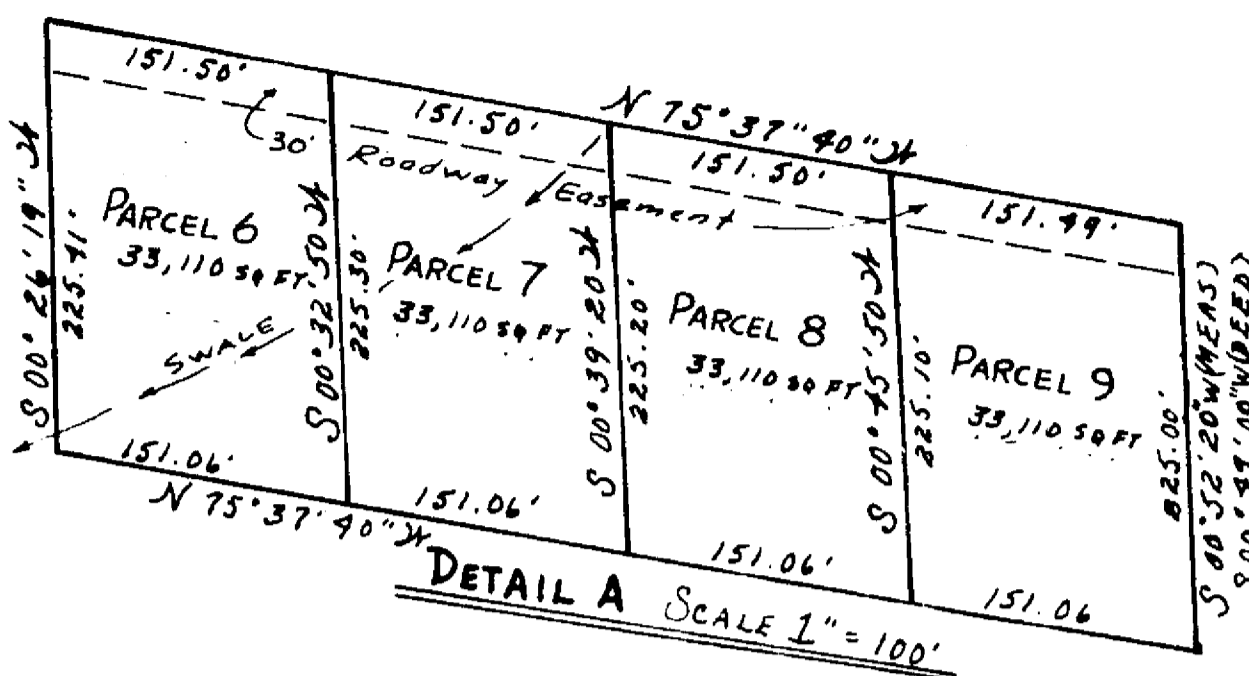
A PORTION OF SECTIONS 25 & 26 T. 23 N., R. 14 E., M. D. B. & M. PLUMAS COUNTY, CALIF.

SURVEY OF THE LAND OF KENNETH AND BETTY STEVENS

SURVEYORS CERTIFICATE

THIS MAP WAS PREPARED BY ME OR UNDER MY DIRECTION AND IS BASED UPON A FIELD SURVEY IN CONFORMANCE WITH THE REQUIREMENTS OF THE SUBDIVISION MAP ACT AT THE REQUEST OF KENNETH STEVENS IN APRIL 1970. I HEREBY CERTIFY THAT IT CONFORMS TO THE APPROVED TENTATIVE MAP AND THE CONDITIONS OF APPROVAL THEREOF, AND THAT ALL PROVISIONS OF APPLICABLE STATE LAW AND LOCAL ORDINANCES HAVE BEEN COMPLIED WITH.

Gerald C. Henderson
GERALD C. HENDERSON LS 3297



This map is identical to that Parcel Map filed September 29, 1970 in Book 3 of Parcel Maps at page 12, records of Plumas County, State of California, except for the omission of a note pertaining to the conditions of Planning Commission approval and reference to zoning restrictions.

Sam A. Fitch
Assistant Engineer RCE 13225



SCALE 1"=300'

NOTES
BASIS OF BEARING IS THE SOUTH BOUNDARY OF STATE ROUTE 70 AS SHOWN ON STATE HIGHWAY MAP DATED 3-19-57 BECKWOURTH. LOT CORNERS SHOWN AS SET, TO BE SET WITHIN 60 DAYS OF RECORDING OF FINAL MAP.

LEGEND
FND STATE HIGHWAY MONUMENTS ●
SET 3/4" OR 1/2" IP TAGGED LS 3297 ○
COMPUTED CORNER LOCATION ⚡
EXISTING FENCE * * * * *

RECORDERS CERTIFICATE
FILED THIS 24TH DAY OF August, 1972 AT 3:05 P.M.
IN BOOK 3 OF PARCEL MAPS AT PAGE 118 AT
THE REQUEST OF GERALD C. HENDERSON.
RECORDING No. 001 FEE \$ 00
Dorothy H. Marking
COUNTY RECORDER

COUNTY ENGINEER'S CERTIFICATE
THIS MAP HAS BEEN EXAMINED FOR CONFORMANCE WITH THE REQUIREMENTS OF SECTION 11575 OF THE SUBDIVISION MAP ACT THIS 2ND DAY OF August 1972.
Darrell P. Payne
DARRELL P. PAYNE RCE 8996

GERALD C. HENDERSON
LICENSED LAND SURVEYOR
P.O. BOX 13, PORTOLA, CALIF.