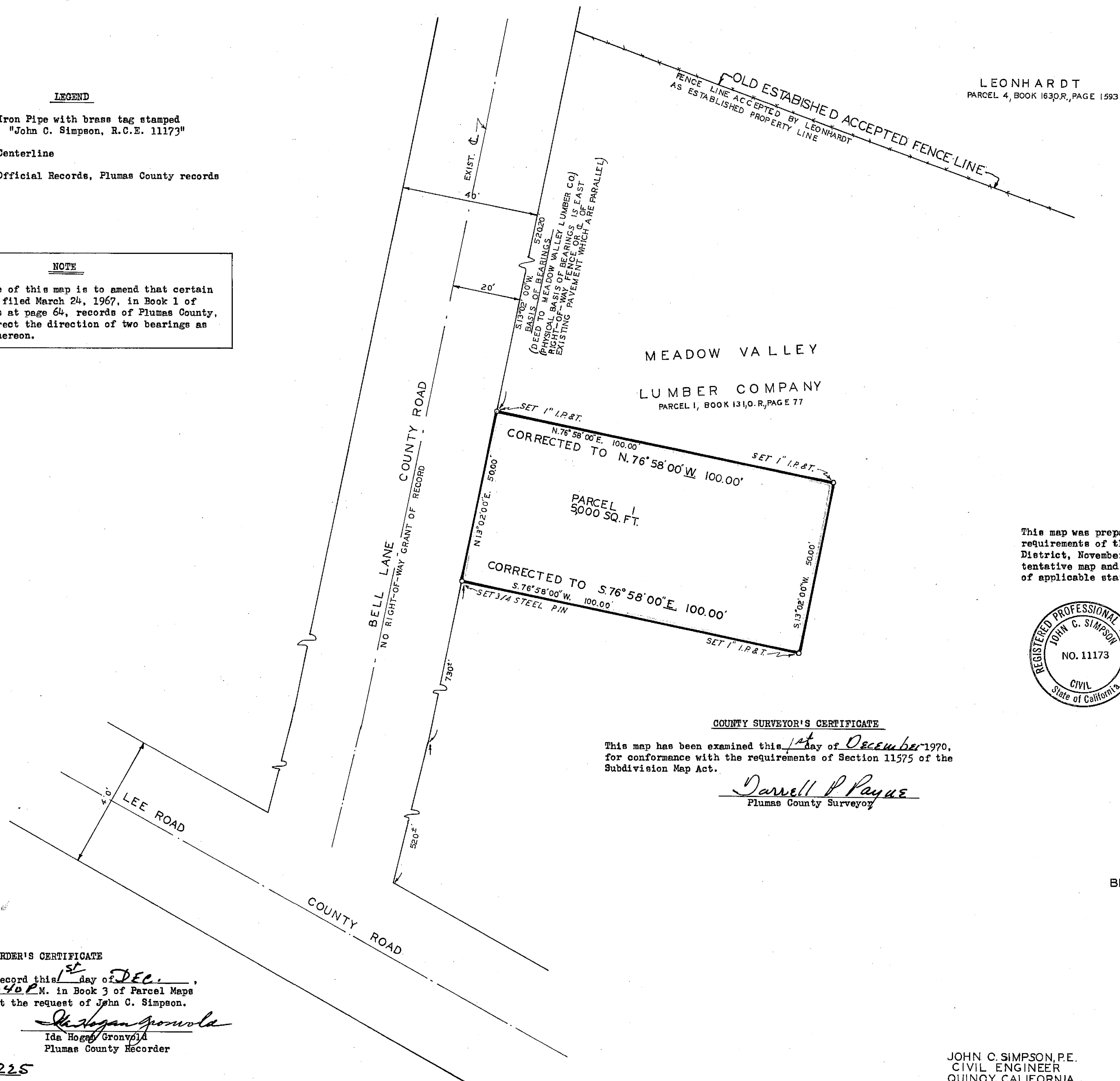


LEGEND

- I.P. & T. Iron Pipe with brass tag stamped
"John C. Simpson, R.C.E. 11173"
- Centerline
- O.R. Official Records, Plumas County records

NOTE

The purpose of this map is to amend that certain Parcel Map filed March 24, 1967, in Book 1 of Parcel Maps at page 64, records of Plumas County, and to correct the direction of two bearings as indicated hereon.



SURVEYOR'S CERTIFICATE

This map was prepared by me or under my direction in conformance with the requirements of the Subdivision Map Act at the request of East Quincy Services District, November 9, 1970. I hereby certify that it conforms to the approved tentative map and the conditions of approval thereof; that all provisions of applicable state law and local ordinances have been complied with.

John C. Simpson
John C. Simpson
R.C.E. 11173



COUNTY SURVEYOR'S CERTIFICATE

This map has been examined this 1st day of December 1970, for conformance with the requirements of Section 11575 of the Subdivision Map Act.

Darrell P. Payne
Darrell P. Payne
Plumas County Surveyor

AMENDED
PARCEL MAP

OF
SUBDIVISION OF ONE PARCEL
WITHIN
LOT 2, SEC. 18, T.24N, R.10E, (M.D.M.)
BEING ACQUIRED FROM MEADOW VALLEY LUMBER COMPANY
BY EAST QUINCY SERVICE DISTRICT
MARCH 1967

RECORDER'S CERTIFICATE

Filed for record this 1st day of DEC., 1970, at 1:40 P.M. in Book 3 of Parcel Maps at Page 31 at the request of John C. Simpson.

Ida Hogg Gronvold
Ida Hogg Gronvold
Plumas County Recorder

Fee 5.00
File No. 3225

JOHN C. SIMPSON, P.E.
CIVIL ENGINEER
QUINCY, CALIFORNIA