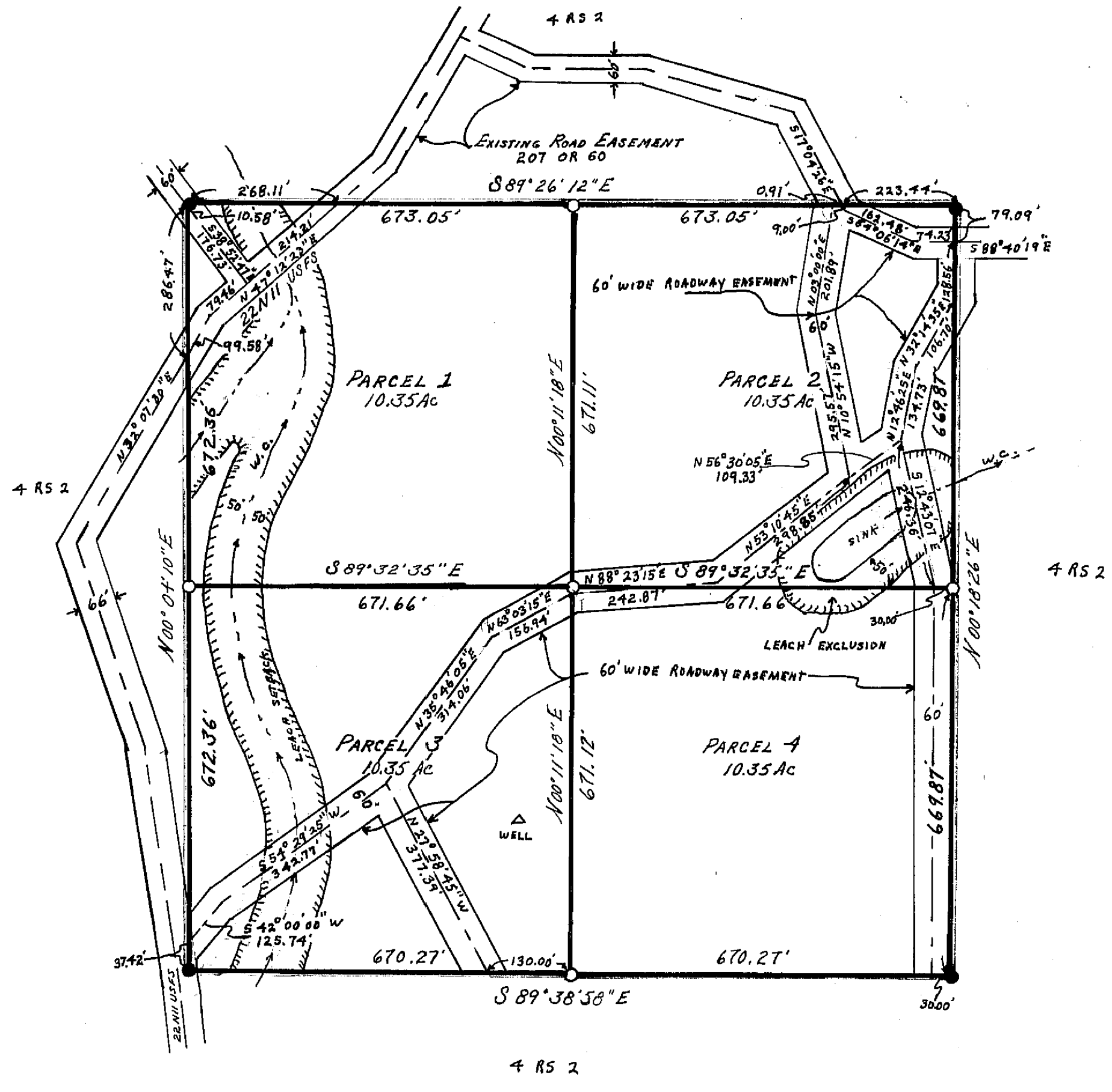


SCALE 1"=200'



LEGEND

FIND 1/2" OR 3/4" IP TAGGED L.S. 3297 ●

SET 1/2" OR 3/4" IP TAGGED L.S. 3297 ○

CENTERLINE ROAD EASEMENT - - - - -

WATERCOURSE W.C.

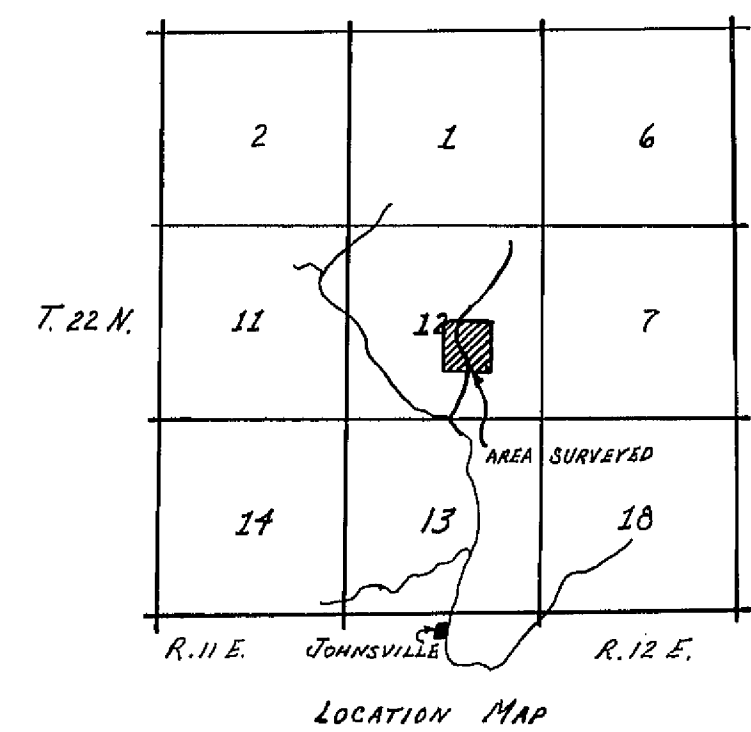
NOTES

BASIS OF BEARING IS TAKEN FROM THAT CERTAIN MAP FILED IN BOOK 4 OF RECORD OF SURVEYS AT PAGE 2 IN PLUMAS COUNTY RECORDER'S OFFICE.

ACCESS TO THESE PARCELS IS OVER U.S. FOREST SERVICE ROADS.

I THE UNDERSIGNED COUNTY TAX COLLECTOR OF THE COUNTY OF PLUMAS, STATE OF CALIFORNIA, DO HEREBY CERTIFY THAT THERE ARE NO TAX LIENS AGAINST PARCELS 1 THROUGH 4 INCLUSIVE, AS SHOWN HEREON, OR UNPAID STATE, COUNTY, MUNICIPAL, OR LOCAL TAXES, OR SPECIAL ASSESSMENTS COLLECTED AS TAXES EXCEPT TAXES OR ASSESSMENTS NOT YET PAYABLE. TAXES OR ASSESSMENTS WHICH ARE A LIEN BUT NOT YET PAYABLE ARE ESTIMATED TO BE IN THE AMOUNT OF NONE

Douglas S. Redstreake
DOUGLAS S. REDSTREAKE
PLUMAS COUNTY TAX COLLECTOR



SURVEYOR'S CERTIFICATE

THIS MAP WAS PREPARED BY ME OR UNDER MY DIRECTION AND IS BASED UPON A FIELD SURVEY IN CONFORMANCE WITH THE REQUIREMENTS OF THE SUBDIVISION MAP ACT AT THE REQUEST OF F. COLE IN JULY 1971. I HEREBY CERTIFY THAT IT CONFORMS TO THE APPROVED TENTATIVE MAP AND THE CONDITIONS OF APPROVAL THEREOF, AND THAT ALL PROVISIONS OF APPLICABLE STATE LAW AND LOCAL ORDINANCES HAVE BEEN COMPLIED WITH.

Gerald C. Henderson
GERALD C. HENDERSON L.S. 3297

COUNTY SURVEYOR'S CERTIFICATE

THIS MAP HAS BEEN EXAMINED FOR CONFORMANCE WITH THE REQUIREMENTS OF SECTION 11575 OF THE SUBDIVISION MAP ACT THIS 20TH DAY OF JANUARY 1972.

Darrell P. Payne
DARRELL P. PAYNE R.L.E. 8596

COUNTY RECORDER'S CERTIFICATE

FILED THIS 20TH DAY OF JANUARY 1972 AT 2:02 P.M., IN BOOK 3 OF PARCEL MAPS, AT PAGE 88, AT THE REQUEST OF GERALD C. HENDERSON.

FEE 5.00

RECORDING NO. 3904

Dorothy Ann Maskey
COUNTY RECORDER

PARCEL MAP

OF A SUBDIVISION INTO FOUR PARTS

FOR JULY 1971

N.W. 1/4 OF S.E. 1/4 OF SECTION 12

T. 22 N., R. 11 E., M.D.M.

PLUMAS COUNTY, CALIFORNIA

GERALD C. HENDERSON
LICENSED LAND SURVEYOR
P.O. Box 13
PORTOLA, CALIFORNIA 96122