

I, THE UNDERSIGNED COUNTY TAX COLLECTOR OF THE COUNTY OF PLUMAS, STATE OF CALIFORNIA, DO HEREBY CERTIFY THAT THERE ARE NO TAX LIENS AGAINST PARCELS 1 THROUGH 4 INCLUSIVE, AS SHOWN HEREON, OR UNPAID STATE, COUNTY, MUNICIPAL, OR LOCAL TAXES, OR SPECIAL ASSESSMENTS COLLECTED AS TAXES, EXCEPT TAXES OR ASSESSMENTS NOT YET PAYABLE, TAXES OR ASSESSMENTS WHICH ARE A LIEN, BUT NOT YET PAYABLE ARE ESTIMATED TO BE IN THE AMOUNT OF NONE

Douglas S. Redstreake  
DOUGLAS S. REDSTREAK  
PLUMAS COUNTY TAX COLLECTOR

**SURVEYOR'S CERTIFICATE**

THIS MAP WAS PREPARED BY ME OR UNDER MY DIRECTION AND IS BASED UPON A FIELD SURVEY IN CONFORMANCE WITH THE REQUIREMENTS OF THE SUBDIVISION MAP ACT AT THE REQUEST OF L. B. WELCH IN JULY 1971. I HEREBY CERTIFY THAT IT CONFORMS TO THE APPROVED TENTATIVE MAP AND THE CONDITIONS OF APPROVAL THEREOF, AND THAT ALL PROVISIONS OF APPLICABLE STATE LAW AND LOCAL ORDINANCES HAVE BEEN COMPLIED WITH.

Gerald C. Henderson  
GERALD C. HENDERSON L.S. 3297

**COUNTY SURVEYOR'S CERTIFICATE**

THIS MAP HAS BEEN EXAMINED FOR CONFORMANCE WITH THE REQUIREMENTS OF SECTION 11575 OF THE SUBDIVISION MAP ACT THIS 11th DAY OF Feb 1971.

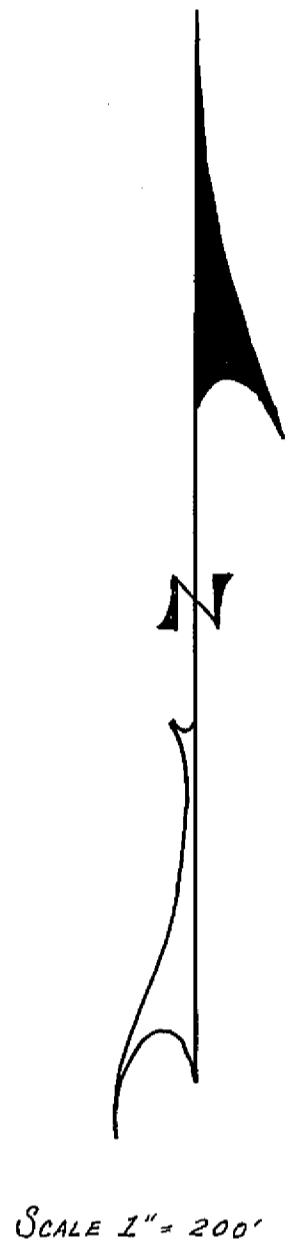
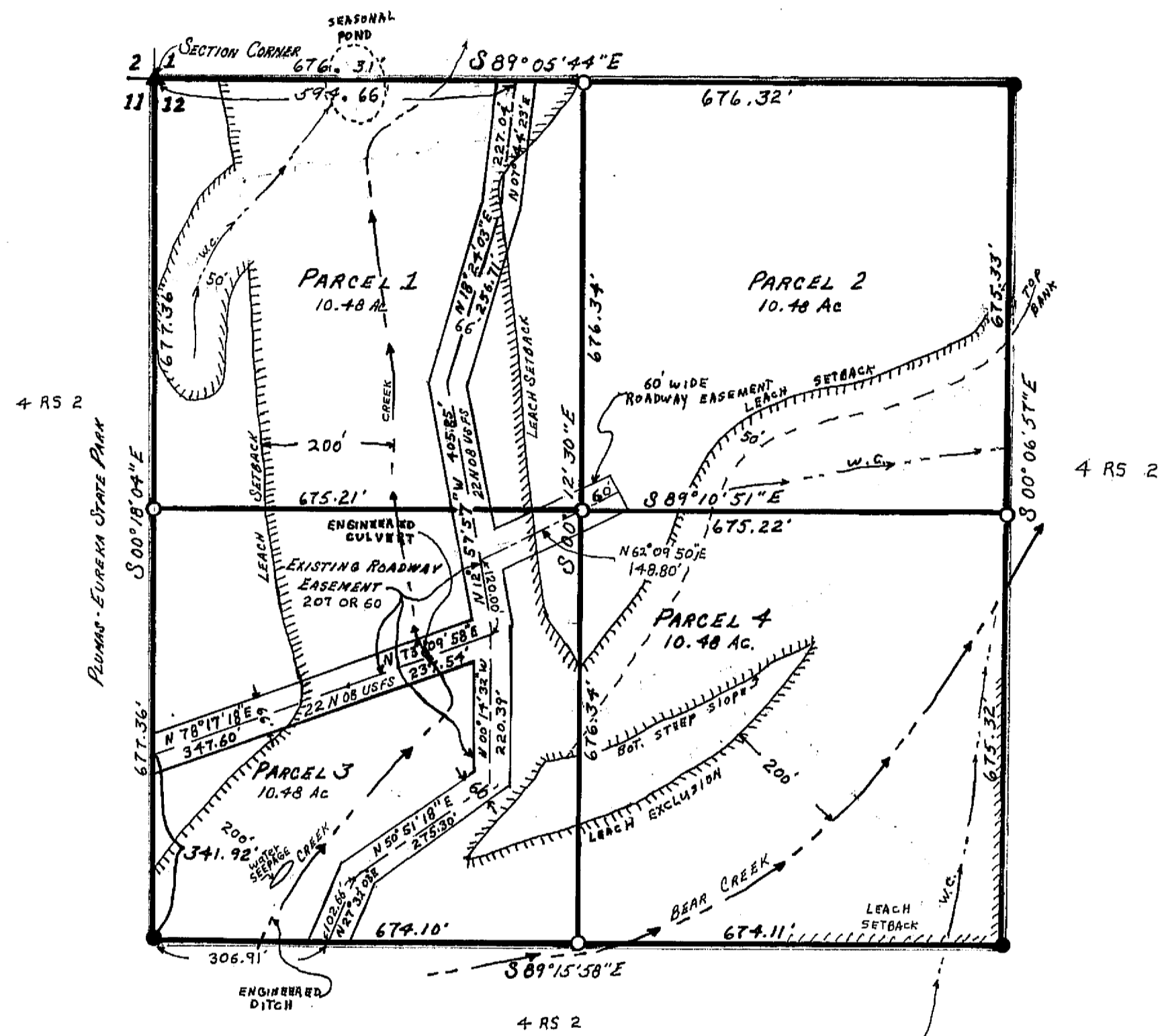
Darrell P. Payne  
DARRELL P. PAYNE R.C.E. 8596

**COUNTY RECORDER'S CERTIFICATE**

FILED THIS 11th DAY OF Feb, 1971, AT 2:10 P.M., IN BOOK 3 OF PARCEL MAPS AT PAGE 93 AT THE REQUEST OF GERALD C. HENDERSON.

FEE 5.00  
RECORDING No 4181  
Dorothy Ann Marley  
COUNTY RECORDER

**PARCEL MAP**  
OF A SUBDIVISION INTO FOUR PARTS  
L.B. WELCH <sup>FOR</sup> JULY 1971  
N.W. 1/4 OF N.W. 1/4 OF SECTION 12  
T. 22 N., R. 11 E., M.D.M.  
PLUMAS COUNTY, CALIFORNIA



**LEGEND**

- FND 3/4" IP IN ROCK MOUND TAGGED L.S. 3297 ▲
- FND 1/2" OR 3/4" IP TAGGED L.S. 3297 ●
- SET 1/2" OR 3/4" IP TAGGED L.S. 3297 ○
- CENTERLINE OF ROADWAY EASEMENT ———
- WATER COURSE W.C.

**NOTES**

BASIS OF BEARING IS TAKEN FROM THAT CERTAIN MAP FILED IN BOOK 4 OF RECORD OF SURVEYS AT PAGE 2, PLUMAS COUNTY RECORDS.

ACCESS TO THESE PARCELS IS OVER U.S. FOREST SERVICE ROADS.

GERALD C. HENDERSON  
LICENSED LAND SURVEYOR  
P.O. Box 13  
PORTOLA, CALIFORNIA