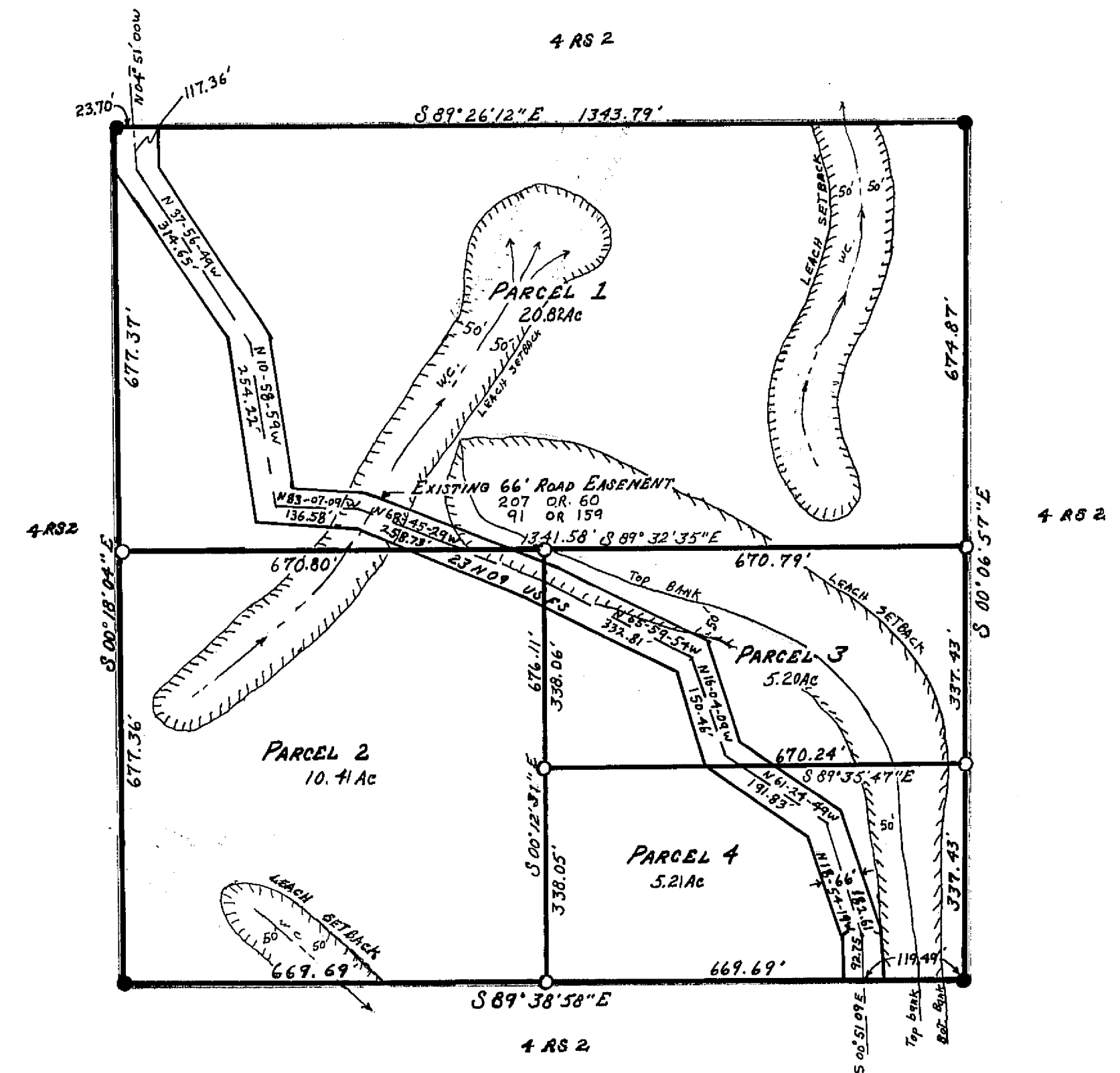
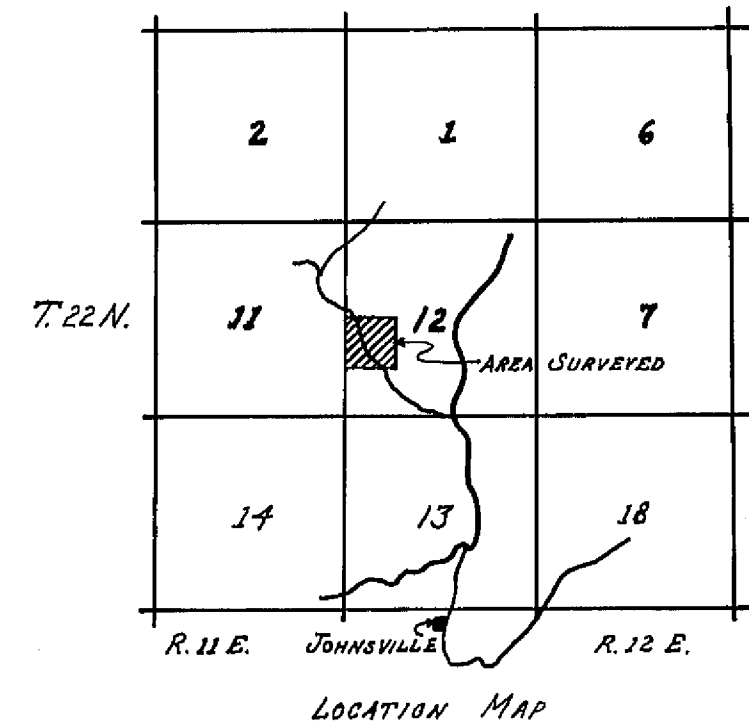


SCALE 1" = 200'



I THE UNDERSIGNED COUNTY TAX COLLECTOR OF THE COUNTY OF PLUMAS, STATE OF CALIFORNIA, DO HEREBY CERTIFY THAT THERE ARE NO TAX LIENS AGAINST PARCELS 1 THROUGH 4 INCLUSIVE, AS SHOWN HEREON, OR UNPAID STATE, COUNTY, MUNICIPAL, OR LOCAL TAXES, OR SPECIAL ASSESSMENTS COLLECTED AS TAXES, EXCEPT TAXES OR ASSESSMENTS NOT YET PAYABLE. TAXES OR ASSESSMENTS WHICH ARE A LIEN, BUT NOT YET PAYABLE ARE ESTIMATED TO BE IN THE AMOUNT OF NONE.

Douglas S. Redstreake
 DOUGLAS S. REDSTREAKE
 PLUMAS COUNTY TAX COLLECTOR



SURVEYOR'S CERTIFICATE
 THIS MAP WAS PREPARED BY ME OR UNDER MY DIRECTION AND IS BASED UPON A FIELD SURVEY IN CONFORMANCE WITH THE REQUIREMENTS OF THE SUBDIVISION MAP ACT AT THE REQUEST OF B.D. UNDERWOOD IN SEPT. 1971. I HEREBY CERTIFY THAT IT CONFORMS TO THE APPROVED TENTATIVE MAP AND THE CONDITIONS OF APPROVAL THEREOF, AND THAT ALL PROVISIONS OF APPLICABLE STATE LAW AND LOCAL ORDINANCES HAVE BEEN COMPLIED WITH.

Gerald C. Henderson
 GERALD C. HENDERSON L.S. 3297

COUNTY SURVEYOR'S CERTIFICATE
 THIS MAP HAS BEEN EXAMINED FOR CONFORMANCE WITH THE REQUIREMENTS OF SECTION 11675 OF THE SUBDIVISION MAP ACT THIS 29th DAY OF FEB 1972

Darrell P. Payne
 DARRELL P. PAYNE R.C.E. 8596

COUNTY RECORDER'S CERTIFICATE
 FILED THIS 29th DAY OF FEBRUARY, 1972, AT 3:45 P.M., IN BOOK 3 OF PARCEL MAPS AT PAGE 95 AT THE REQUEST OF GERALD C. HENDERSON.
 FEE 5.00

Dorothy New Masley
 COUNTY RECORDER

PARCEL MAP
 OF A SUBDIVISION INTO FOUR PARTS
 B.D. UNDERWOOD FOR SEPT. 1971
 N.W. 1/4 OF S.W. 1/4 OF SECTION 12
 T. 22 N., R. 11 E., M.D.M.
 PLUMAS COUNTY, CALIFORNIA

LEGEND
 FIN 1/2" OR 3/4" IP THAGED L.S. 3297 ●
 SET 1/2" OR 3/4" IP THAGED L.S. 3297 ○
 CENTERLINE ROAD EASEMENT ———
 WATERCOURSE W.C.

NOTES
 BASIS OF BEARING IS TAKEN FROM THAT CERTAIN MAP FILED IN BOOK 4 OF RECORD OF SURVEYS AT PAGE 2 PLUMAS COUNTY RECORDER'S OFFICE.
 ACCESS TO THESE PARCELS IS OVER U.S. FOREST SERVICE ROADS.

GERALD C. HENDERSON
 LICENSED LAND SURVEYOR
 P. O. Box 13
 PORTOLA, CALIFORNIA