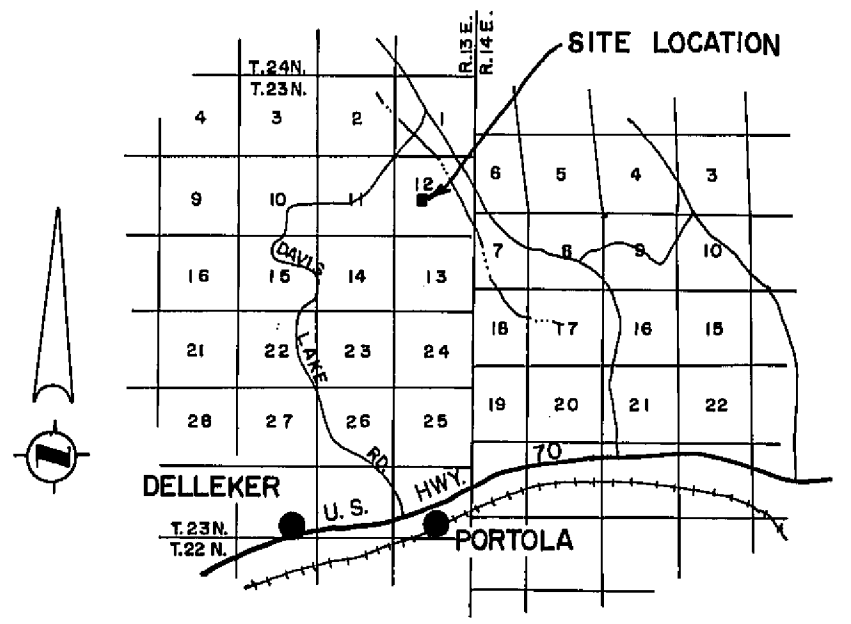
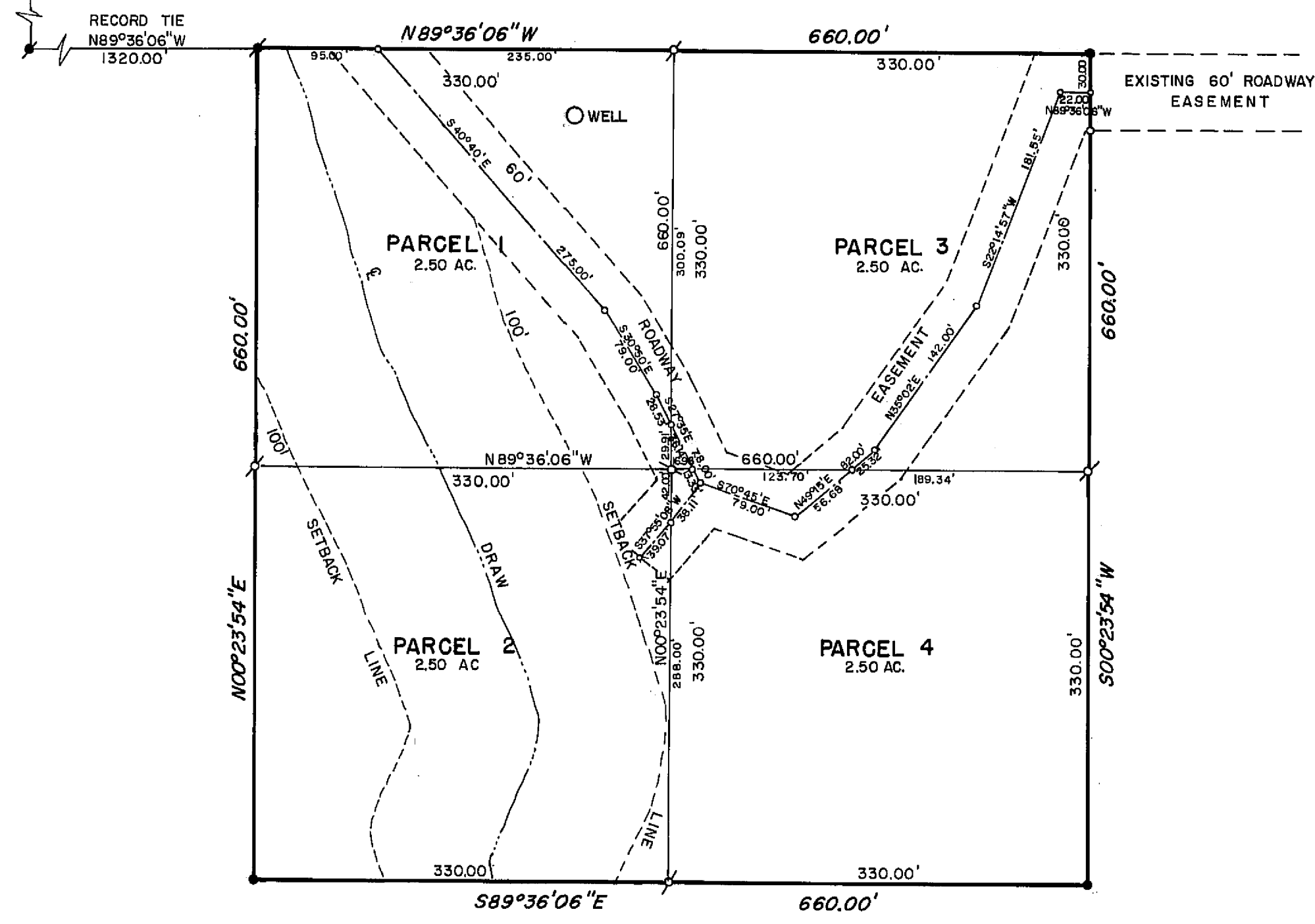
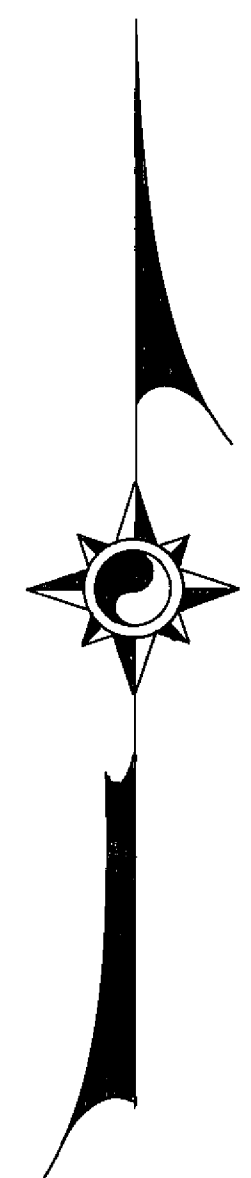


2 1  
11 12



LOCATION MAP  
SCALE 1" = 2-1/2 MILES



TAX COLLECTOR'S CERTIFICATE

I, DOUGLAS S. REDSTREAKE, COUNTY TAX COLLECTOR OF THE COUNTY OF PLUMAS, STATE OF CALIFORNIA, DO HEREBY CERTIFY THAT THERE ARE NO TAX LIENS AGAINST PARCELS ONE THRU FOUR INCLUSIVE, AS SHOWN HEREON, OR UNPAID STATE, COUNTY, MUNICIPAL OR LOCAL TAXES OR SPECIAL ASSESSMENTS COLLECTED AS TAXES, EXCEPT TAXES OR ASSESSMENTS NOT YET PAYABLE. TAXES OR ASSESSMENTS WHICH ARE A LIEN BUT NOT YET PAYABLE I ESTIMATE TO BE IN THE AMOUNT OF \$135.<sup>00</sup>.

*Douglas S. Redstreak*  
DOUGLAS S. REDSTREAKE  
PLUMAS COUNTY TAX COLLECTOR

LEGEND

- CORNER AS SHOWN ON AMENDED R/S MAP IN BK. 3, PG. 108, PLUMAS COUNTY O/R.
- FOUND 3/4" IRON PIPE MARKED L.S. 3336
- SET 3/4" IRON PIPE MARKED L.S. 3336
- COMPUTED CORNER LOCATION

NOTES

THERE WILL BE NO FURTHER SUBDIVISION OF THESE PARCELS.

THE BASIS OF BEARING IS THE SOUTH LINE OF PARCEL 6, GIVEN AS N89°36'06"E ON THAT CERTAIN AMENDED RECORD OF SURVEY MAP FILED DECEMBER 26, 1967, IN BOOK 3 OF RECORD OF SURVEYS AT PAGE 108, RECORDING NO. 2695, IN THE PLUMAS COUNTY OFFICIAL RECORDS.

TOTAL ACREAGE 10.00 AC.

BEING ALL OF PARCEL 1 OF THAT CERTAIN PARCEL MAP FILED NOVEMBER 26, 1969, IN BOOK 2 OF PARCEL MAPS AT PAGE 103, PLUMAS COUNTY OFFICIAL RECORDS.

SURVEYOR'S CERTIFICATE

THIS MAP WAS PREPARED BY ME OR UNDER MY DIRECTION AND IS BASED UPON A FIELD SURVEY IN CONFORMANCE WITH THE REQUIREMENTS OF THE SUBDIVISION MAP ACT AT THE REQUEST OF DONOVAN DONALD IN JUNE, 1970. I HEREBY CERTIFY THAT IT CONFORMS TO THE APPROVED TENTATIVE MAP AND THE CONDITIONS OF APPROVAL THEREOF, AND THAT ALL PROVISIONS OF APPLICABLE STATE LAW AND LOCAL ORDINANCES HAVE BEEN COMPLIED WITH.

*Walter B. Grimes*  
WALTER B. GRIMES  
REGISTERED PROFESSIONAL ENGINEER  
R.C.E. 7294

RECORDER'S CERTIFICATE

FILED THIS 21<sup>st</sup> DAY OF March, 1972, AT 3:45 P.M. IN BOOK 3 OF PARCEL MAPS AT PAGE 97 AT THE REQUEST OF WALTER B. GRIMES. RECORDING NO. 4679.  
FEE \$ 5.00

*Dorothy New Maskey*  
COUNTY RECORDER

BY \_\_\_\_\_ DEPUTY

COUNTY ENGINEER'S CERTIFICATE

THIS MAP HAS BEEN EXAMINED FOR CONFORMANCE WITH THE REQUIREMENTS OF SECTION 11575 OF THE SUBDIVISION MAP ACT THIS 20<sup>th</sup> DAY OF March 1972.

*Darrell P. Payne*  
DARRELL P. PAYNE - R.C.E. 8596

PARCEL MAP  
A PORTION OF SECTION 12, T.23N., R.13E., M.D.B&M.  
PLUMAS COUNTY, CALIFORNIA

MAP OF THE LANDS OF  
DONOVAN L. & ELAINE G. DONALD  
SCALE 1" = 100'  
MARCH, 1972

WALTER B. GRIMES AND ASSOC.  
CIVIL ENGINEERS & LAND SURVEYORS  
1356 MANGROVE AVENUE, CHICO, CALIFORNIA