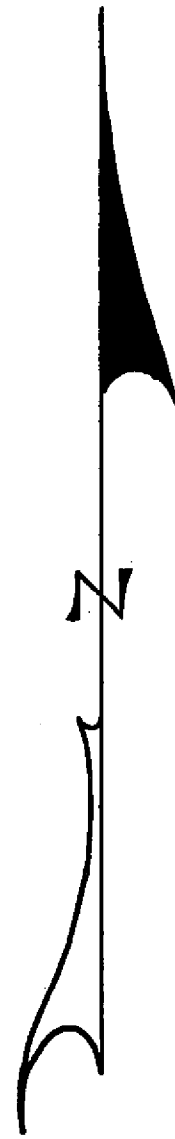
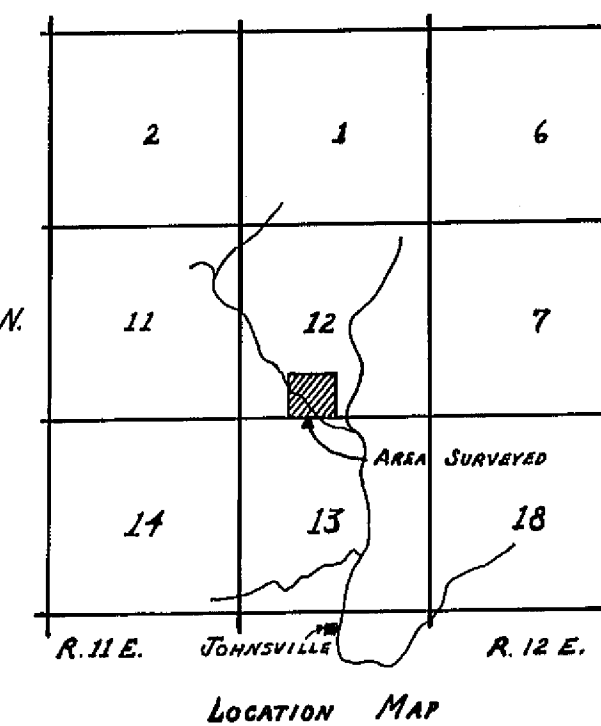


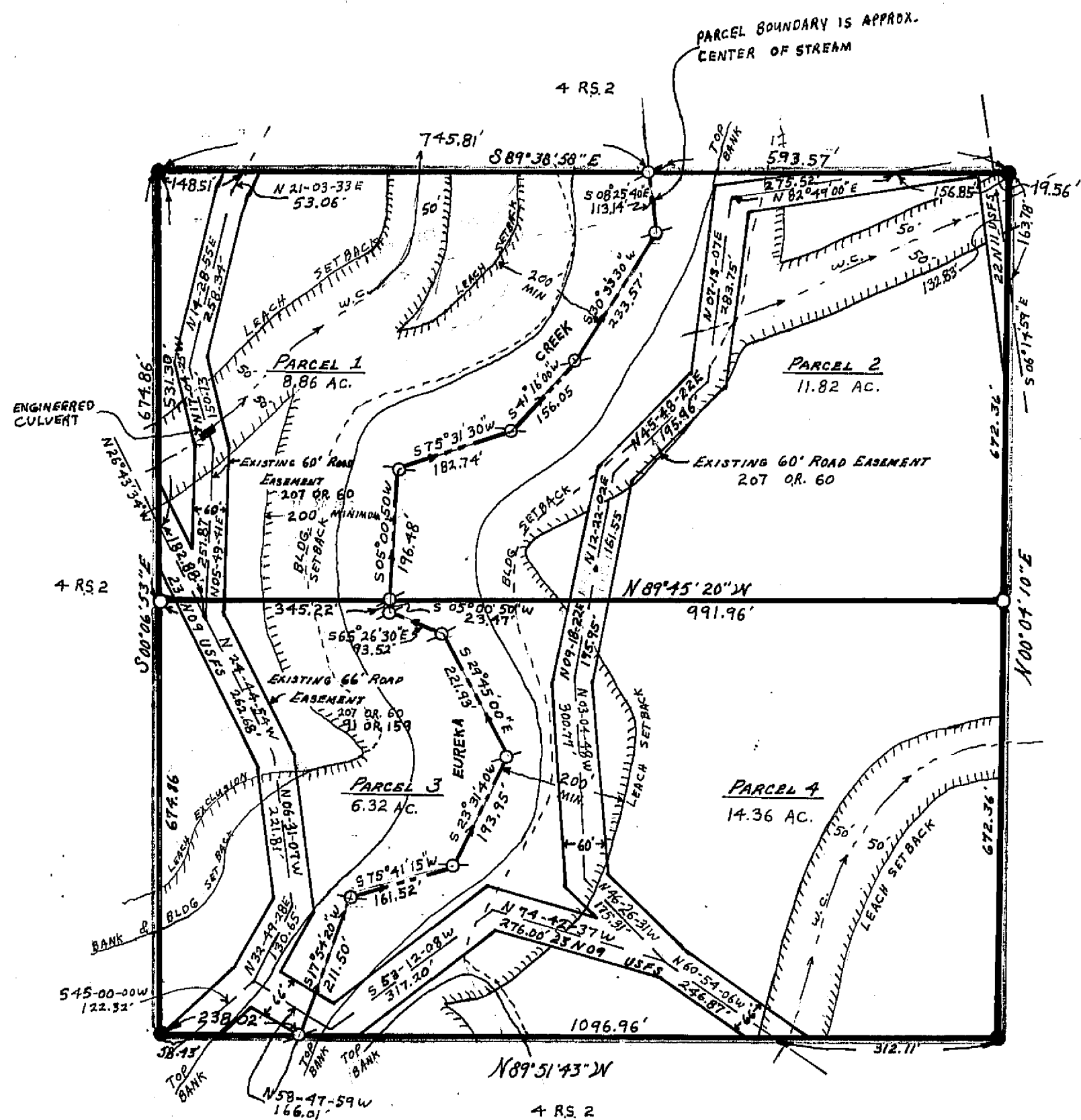
I THE UNDERSIGNED COUNTY TAX COLLECTOR OF THE COUNTY OF PLUMAS, STATE OF CALIFORNIA, DO HEREBY CERTIFY THAT THERE ARE NO TAX LIENS AGAINST PARCELS 1 THROUGH 4 INCLUSIVE, AS SHOWN HEREON, OR UNPAID STATE, COUNTY, MUNICIPAL OR LOCAL TAXES, OR SPECIAL ASSESSMENTS COLLECTED AS TAXES EXCEPT TAXES OR ASSESSMENTS NOT YET PAYABLE. TAXES OR ASSESSMENTS WHICH ARE A LIEN BUT NOT YET PAYABLE ARE ESTIMATED TO BE IN THE AMOUNT OF \$30000.

Douglas S. Redstreak
DOUGLAS S. REDSTRAKE
PLUMAS COUNTY TAX COLLECTOR

T. 22 N.



SCALE 1" = 200'



SURVEYOR'S CERTIFICATE

THIS MAP WAS PREPARED BY ME OR UNDER MY DIRECTION AND IS BASED UPON A FIELD SURVEY IN CONFORMANCE WITH THE REQUIREMENTS OF THE SUBDIVISION MAP ACT AT THE REQUEST OF L. C. NASH IN SEPT. 1971. I HEREBY CERTIFY THAT IT CONFORMS TO THE APPROVED TENTATIVE MAP AND THE CONDITIONS OF APPROVAL THEREOF, AND THAT ALL PROVISIONS OF APPLICABLE STATE LAW AND LOCAL ORDINANCES HAVE BEEN COMPLIED WITH.

Gerald C. Henderson
GERALD C. HENDERSON L.S. 3297

COUNTY SURVEYOR'S CERTIFICATE

THIS MAP HAS BEEN EXAMINED FOR CONFORMANCE WITH THE REQUIREMENTS OF SECTION 11575 OF THE SUBDIVISION MAP ACT THIS 6th DAY OF April 1972.

Darrell P. Payne
DARRELL P. PAYNE R.C.E. 8596

COUNTY RECORDER'S CERTIFICATE

FILED THIS 7th DAY OF April 1972, AT 9:45 A.M., IN BOOK 3 OF PARCEL MAPS AT PAGE 102, AT THE REQUEST OF GERALD C. HENDERSON.

FEE \$500
RECORDING No. 4977
Dorothy New Maskey
COUNTY RECORDER

PARCEL MAP
OF A SUBDIVISION INTO FOUR PARTS
FOR
L.C. NASH SEPT. 1971
S.E. 1/4 OF S.W. 1/4 OF SECTION 12
T. 22 N., R. 11 E., M.D.M.
PLUMAS COUNTY, CALIFORNIA

LEGEND

- FIND 1/2" OR 3/4" IP TAGGED L.S. 3297 ●
- SET 1/2" OR 3/4" IP TAGGED L.S. 3297 ○
- COMPUTED CORNER ○
- WATERCOURSE W.C.
- CENTERLINE ROAD EASEMENT - - -

NOTES

- BASIS OF BEARING IS TAKEN FROM THAT CERTAIN MAP FILED IN BOOK 4 OF RECORD OF SURVEYS AT PAGE 2 PLUMAS COUNTY RECORDS.
- ACCESS TO THESE PARCELS IS OVER U.S. FOREST SERVICE ROADS.

GERALD C. HENDERSON
LICENSED LAND SURVEYOR
P. O. Box 13
PORTOLA, CALIFORNIA