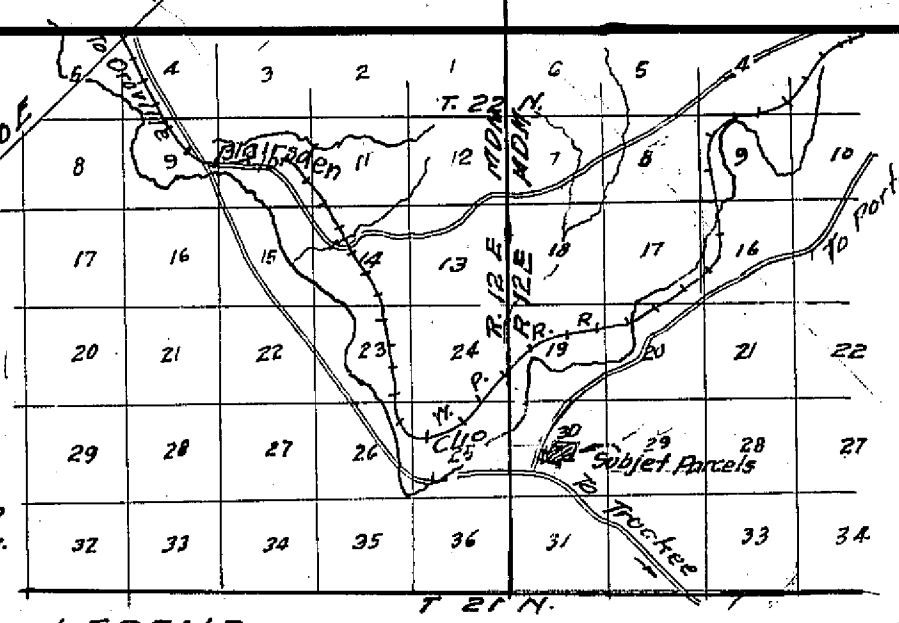


LOCATION MAP
SCALE 1/2" = 1 MI.



LEGEND
Set 3/4" iron pipe marked R.C.E. 292
Found U.S. Gov't corner as indicated
Found point as indicated
Computed or established corner location.

OTHER LANDS OF BARK

SCALE: 1" = 100'
NE 1/4 SE 1/4 SEC. 30
U.S. A.

30 Feet 3/4" Bolt with 2" Head
31 1/4 S.C.
36
589' 53" 00" E
729' 00" (Rec.)
BASIS OF BEARINGS

COUNTY RECORDER'S CERTIFICATE
Filed this 17th day of JANUARY 1975 at 10:40 AM
in Book 4 of Parcel Maps at Page 24 at
the request of County Engineer
Recording No. 4612
Fee \$5.
Dorothy Jean Masley
County Recorder
Kathy Opler
Deputy.

SURVEYOR'S CERTIFICATE
This map was prepared by me and is based
upon a field survey and compiled from record
data in conformance with the Subdivision Map
Act at the request of WALTER A. BARK in Aug
ust 1974. I hereby certify that it conforms
to the approved tentative map and the con-
ditions of approval there of, that all provisions
of applicable state law and local ordinances
have been complied with.
James F. Flanagan
James F. Flanagan R.C.E. 292
Sept. 1974

COUNTY ENGINEER'S CERTIFICATE
This map has been examined for conformance with the requirements of
Section 11575 of the Subdivision Map Act. this 13th day of January 1975
Jay A. Fite
LARRY A. RITES COUNTY ENGINEER
R.C.E. 13225

COUNTY TAX COLLECTOR'S CERTIFICATE
I, the undersigned County Tax Collector of the County of Plumas State of California do
hereby certify that there are no tax liens against the parcels of land shown hereon or un-
paid state and county or local taxes or special assessments collected as taxes, except
taxes or assessments not yet payable. Taxes or assessments which are a lien but not
yet payable, are estimated to be in the amount of NONE
Douglas S. Redstreake
DOUGLAS S. REDSTREAKE Tax Collector

Note: Water Supply by Individ-
ual Wells at approved locations.
Waste disposal by Septic Tanks
and Leaching Fields to be
located on approved site.

PARCEL MAP

TWO PARCELS IN THE SE 1/4 OF
SECTION 30, T. 22 N., R. 13 E., M.D.M.
CLIO, PLUMAS COUNTY, CALIFORNIA
BEING A DIVISION OF A PORTION OF PAR-
CEL 2, BOOK 3 PARCEL MAPS, PAGE 83.

LANDS OF WALTER A. AND MARY L. BARK

Dec of Esmt 239 OR 780

4 PM 124