

COUNTY TAX COLLECTOR'S CERTIFICATE

I, the undersigned, County Tax Collector of the County of Plumas, State of California, do hereby certify that there are no tax liens against Parcel 1 and 2 as shown hereon or unpaid state, county, municipal or local taxes, or spl. assessments collected as taxes, except taxes or assessments not yet payable. Taxes or assessments which are a lien but not yet payable, are estimated to be in the amount of NONE.

Douglas S. Redstreak
Douglas S. Redstreak
Plumas County Tax Collector

COUNTY SURVEYOR'S CERTIFICATE

This map has been examined this 24th day of January, 1975, for conformance with the requirements of Section 11575 of the Subdivision Map Act.

Larry A. Fites
Larry A. Fites, R.C.E. 13225
Plumas County Surveyor

NOTES

Tentative Parcel Map approved by Plumas County Planning Commission May 28, 1974. ~~Approved~~ with modified conditions July 8, 1974.

EASEMENT NO. 1 for roadway, utilities, drainage and incidental purposes to be dedicated to the County of Plumas concurrently with the filing of this map.

EASEMENT NO. 2 for a water pipe line and appurtenances for the benefit of Parcel 1. A declaration establishing this easement to be recorded concurrently with the filing of this map.

RECORDER'S CERTIFICATE

Filed this 24th day of JANUARY, 1975, at 9:40 P.M. in Book 4 of Parcel Maps at Page 123 at the request of John C. Simpson.

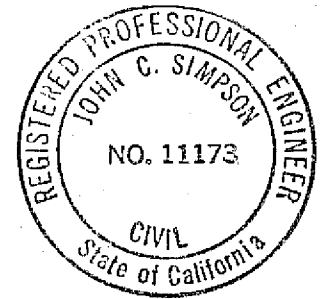
Dorothy Mae Masley
Plumas County Recorder
by *Ronald S. Brown*

Fee \$5.00
File No. _____

SURVEYOR'S CERTIFICATE

This map was prepared by me or under my direction (and is based upon a field survey) in conformance with the Subdivision Map Act at the request of Jan Klement, attorney for claimants under a court decree, October 14, 1974. I hereby certify that it conforms to the approved tentative map and the conditions of approval thereof; that all provisions of applicable state law and local ordinances have been complied with.

John C. Simpson, P.E.
John C. Simpson
R.C.E. 11173



**PARCEL MAP
SUBDIVISION OF TWO PARCELS**

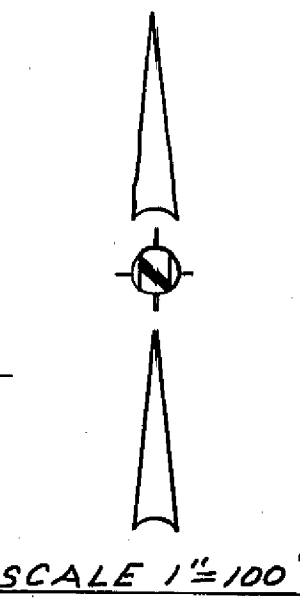
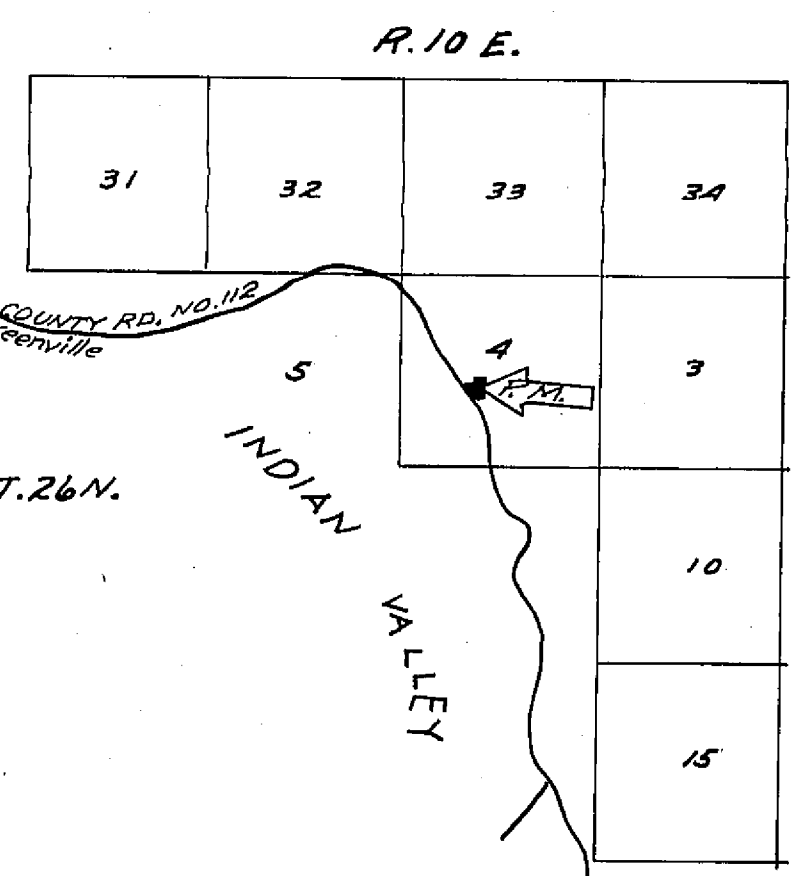
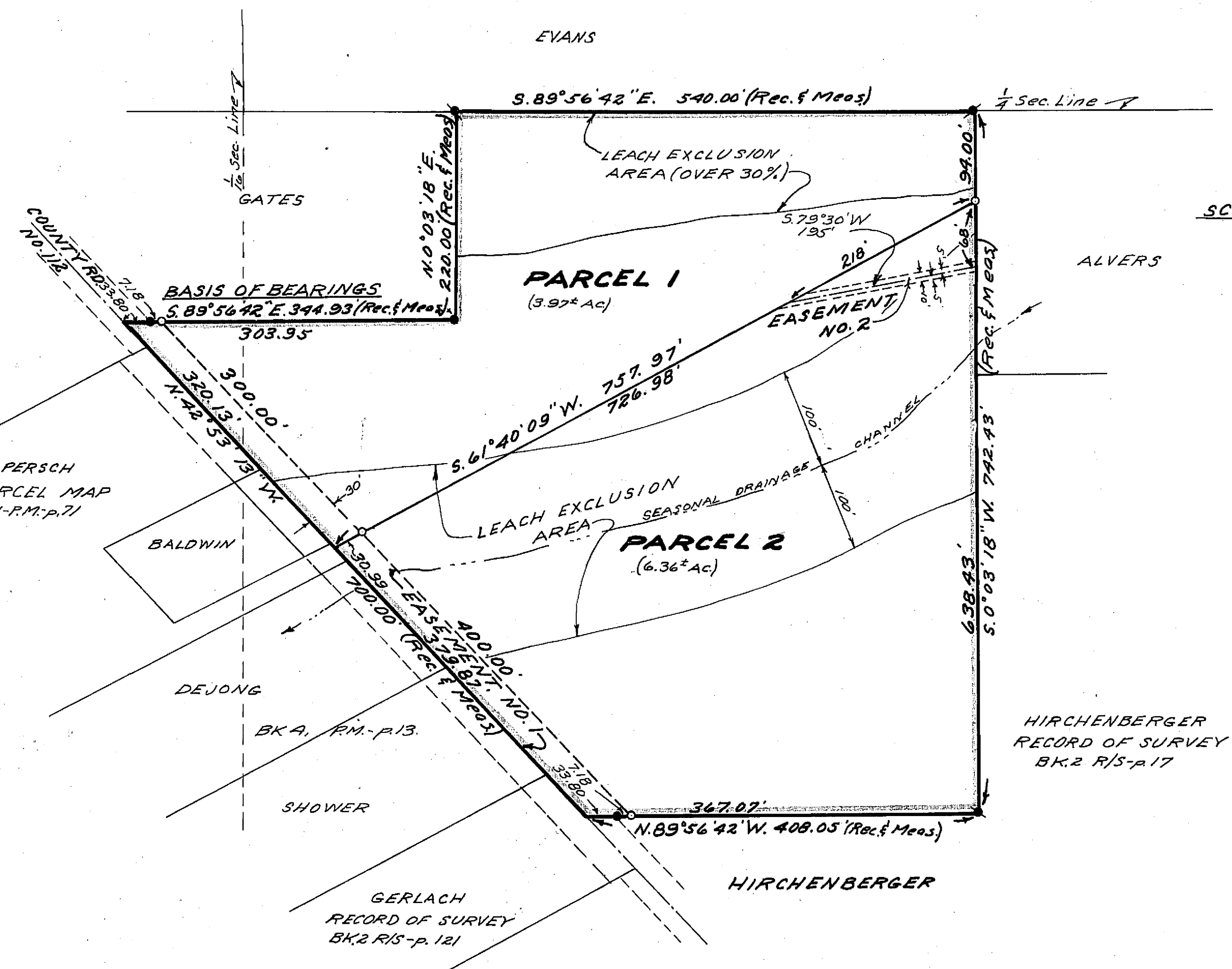
FOR
ELLIS R. WEISKER AND
CECELIA PHIPPEN ESTATE

WITHIN
N 1/2 SW 1/4 SEC. 4, T. 26N., R. 10E., M.D.M.
PLUMAS COUNTY, CALIFORNIA

JOHN C. SIMPSON, P.E.
CIVIL ENGINEER
P.O. BOX 719
QUINCY, CALIFORNIA

Dec of Esmt 240 or 191
Grant of Esmt 240 or 192

HPM/25



- LEGEND**
- Found 3/4" Iron Pipe tagged L.S. 2702
 - Found 3/4" Iron Pipe, untagged
 - Set 1/2" Steel Pin with plastic cap stamped R.C.E. 11173
 - Rec. Record (from deed, record map, etc.)
 - Meas. Measured
 - R/S Record of Survey
 - Bk. Book
 - p. Page
 - P.M. Parcel Map
 - L.S. Land Surveyor
 - R.C.E. Registered Civil Engineer
 - Ac. Acre