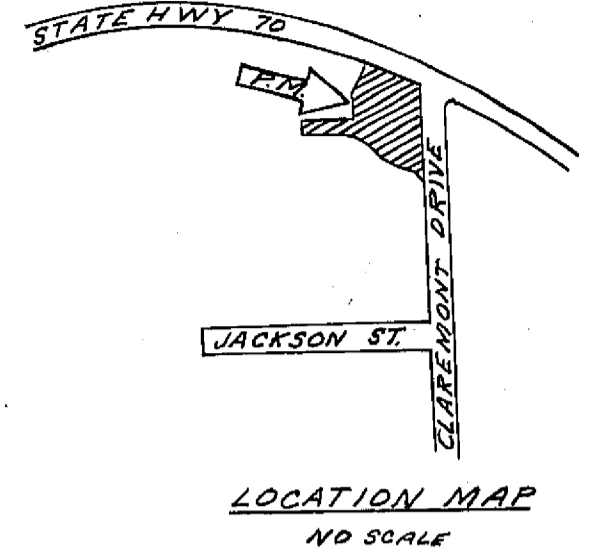


CURVE DATA

	Δ	R	L	T	C	BEARING
1	60°00'00"	120'	125.66'	63.28'	120.00'	N.61°14'37"W.
2	52°59'39"	180'	166.49'	89.74'	160.62'	N.57°44'28"W.
3	82°59'39"	25'	36.21'	22.12'	33.13'	N.42°44'28"W.
4	29°13'30"	180'	91.81'	46.96'	90.82'	N.76°37'52"W.
5	30°46'30"	180'	96.68'	49.54'	95.52'	N.46°37'52"W.
6	44°44'33"	120'	93.70'	49.39'	91.35'	N.53°36'53"W.
7	105°15'27"	25'	45.93'	32.73'	39.74'	S.51°23'07"W.
8	43°40'23"	65'	41.92'	22.04'	40.92'	S.23°04'49"E.
9	39°42'58"	70'	48.52'	25.28'	47.06'	N.87°39'38"W.
10	60°16'07"	45'	47.33'	26.12'	45.18'	N.77°33'04"W.
11	43°40'23"	50'	38.11'	20.04'	37.20'	S.23°04'49"E.
12	62°46'07"	65'	71.21'	39.65'	67.70'	S.76°18'04"E.
13	60°16'07"	50'	52.55'	29.02'	50.20'	S.77°33'04"E.
14	27°37'08"	175'	84.35'	43.02'	83.54'	N.12°34'07"E.
15	73°39'49"	25'	32.14'	18.72'	29.97'	N.10°27'23"W.
16	83°58'38"	20'	29.31'	18.00'	26.76'	N.8°51'18"W.
17	5°55'20"	175'	18.05'	9.05'	18.08'	N.31°10'21"E.

**NOTE**  
 Bearings are grid bearings except as noted.  
 Distances are ground distances except as noted.  
 Multiply ground distance by 0.99985 to obtain  
 grid distance. See Record of survey, Bk. 3,  
 p. 143, for other coordinated monuments in  
 vicinity.



SCALE 1"=40'

LEGEND

- Found Monuments (as noted on map or below)
  - 100 • S&S on prolonged S. line of Central Ave. (See P.M. Book 2, page 85)
  - 99 • S&S (line only) on Claremont Drive (Co-ord. from Div. Hwys. survey)
  - 59 • S&S on Claremont Dr. & Jackson St. (Co-ord. from Div. Hwys. survey)
- Set 1/2" Steel Pin with plastic cap stamped "R.C.E. 11173"
- P.M. Parcel Map
- Bk. Book
- p. Page
- Fd. Found
- IP&T Iron Pipe and Tag
- Rec. Record (from record map, deed, etc.)
- Meas. Measured
- R/W Right-of-Way
- CL Centerline
- R.C.E. Registered Civil Engineer
- S&S Spike and shiner

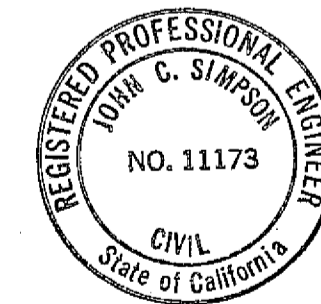
NOTES

1. Tentative Parcel Map approved by Plumas County Planning Commission Nov. 29, 1971. Modifications and amendments approved December 27, 1971.
2. Coordinates are on California State Coordinate System, Zone 1.
3. Parcel 1 limited to use for parking or other use not entailing permanent structures.
4. Parcel 3 to be conveyed to Plumas County as street right-of-way (to be improved by subdivider to current county road standards, or bond submitted to cover such improvements).
5. Parcel 4 is reserved for acquisition by State of California (Highway 70 improvement).

SURVEYOR'S CERTIFICATE

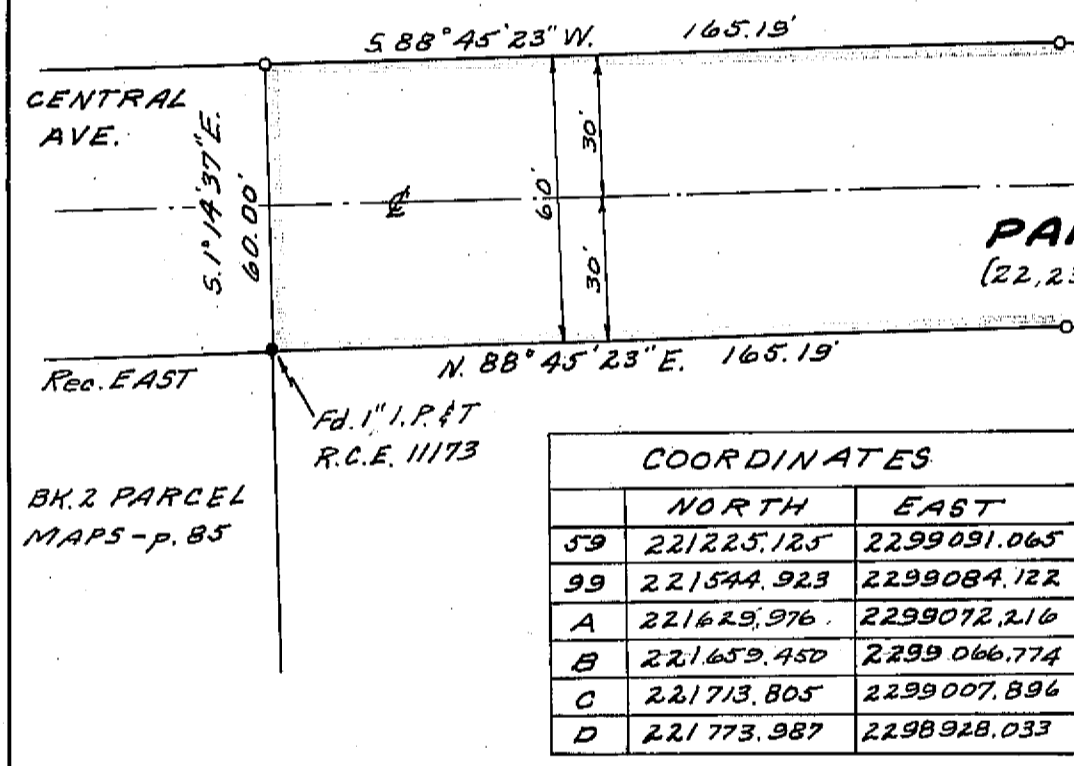
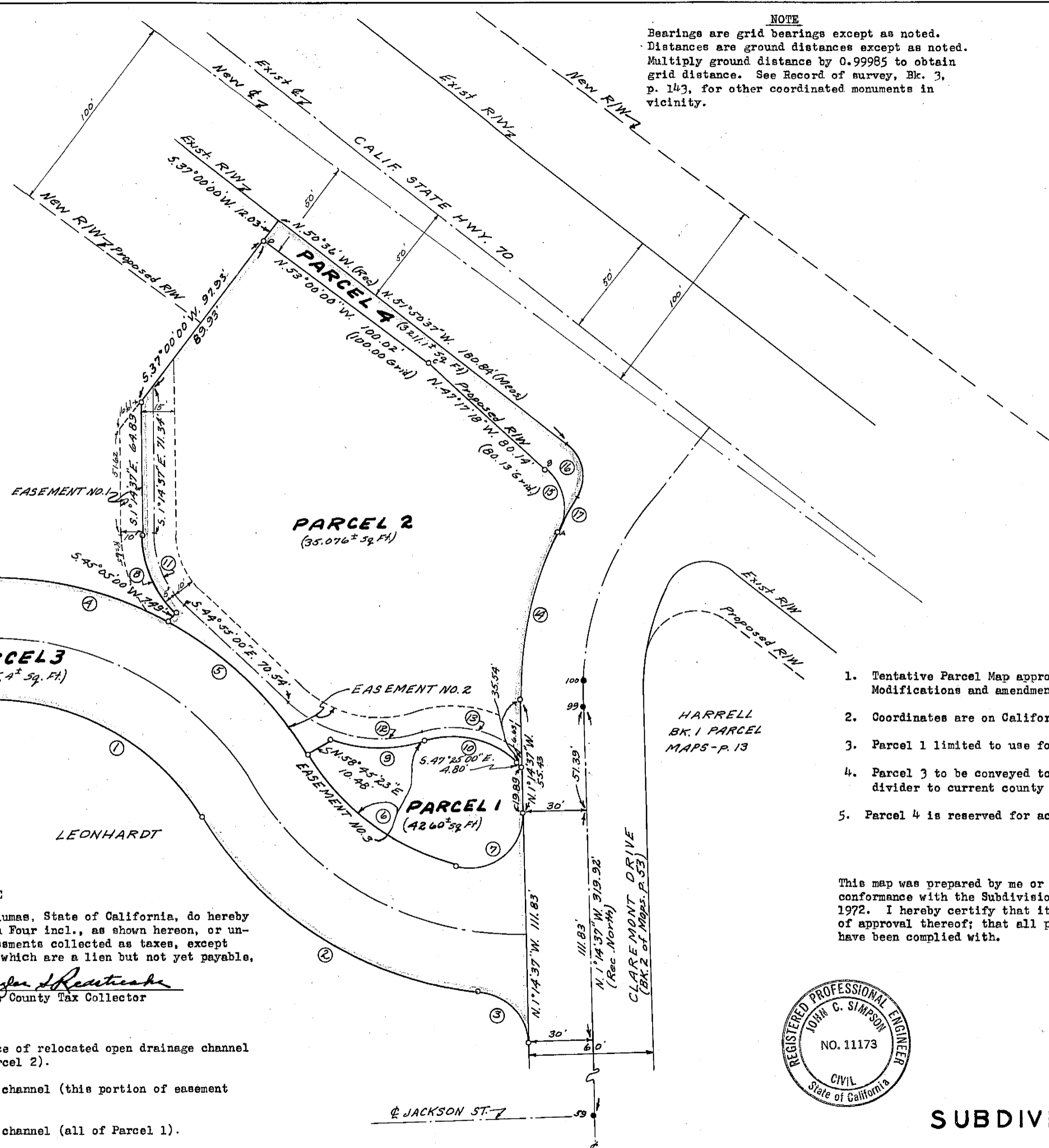
This map was prepared by me or under my direction (and is based upon a field survey) in conformance with the Subdivision Map Act at the request of Ernest G. Leonhardt, Jan. 21, 1972. I hereby certify that it conforms to the approved tentative map and the conditions of approval thereof; that all provisions of applicable state law and local ordinances have been complied with.

*John C. Simpson*  
 John C. Simpson  
 R.C.E. 11173



**PARCEL MAP**  
 OF  
**SUBDIVISION OF FOUR PARCELS**  
 FOR  
**ERNEST G. LEONHARDT**  
 RECORD OWNER  
 WITHIN  
 SE 1/4 SE 1/4, SEC. 14, T. 24 N., R. 9 E., M.D.M.  
 PLUMAS COUNTY, CALIFORNIA

JOHN C. SIMPSON, P.E.  
 CIVIL ENGINEER  
 P.O. BOX 719  
 QUINCY, CALIFORNIA



COORDINATES

	NORTH	EAST
59	221225.125	2299091.065
99	221544.923	2299084.122
A	221629.976	2299072.216
B	221659.450	2299066.774
C	221713.805	2299007.896
D	221773.987	2298928.033

COUNTY TAX COLLECTOR'S CERTIFICATE

I, the undersigned, County Tax Collector of the County of Plumas, State of California, do hereby certify that there are no tax liens against Parcels One thru Four incl., as shown hereon, or unpaid state, county, municipal, or local taxes, or spl. assessments collected as taxes, except taxes or assessments not yet payable. Taxes or assessments which are a lien but not yet payable, are estimated to be in the amount of \$905.

*Walter J. Reddick*  
 Walter J. Reddick  
 Plumas County Tax Collector

EASEMENTS

- EASEMENT NO. 1 - To be provided by subdivider for maintenance of relocated open drainage channel (this portion of easement is outside of Parcel 2).
- EASEMENT NO. 2 - For maintenance of relocated open drainage channel (this portion of easement is within Parcel 2).
- EASEMENT NO. 3 - For maintenance of relocated open drainage channel (all of Parcel 1).

RECORDER'S CERTIFICATE

Filed this 27<sup>th</sup> day of October, 1972, at 4:30 P.M. in Book 2 of Parcel Maps at Page 3 at the request of John C. Simpson.  
*Stanley New Marley*  
 Stanley New Marley  
 Plumas County Recorder

COUNTY SURVEYOR'S CERTIFICATE

This map has been examined this 18<sup>th</sup> day of July, 1972, for conformance with the requirements of Section 11575 of the Subdivision Map Act.  
*Harrell Payne*  
 Harrell Payne  
 Plumas County Surveyor

Fee \$5.00  
 File No. 2115

4pm 3