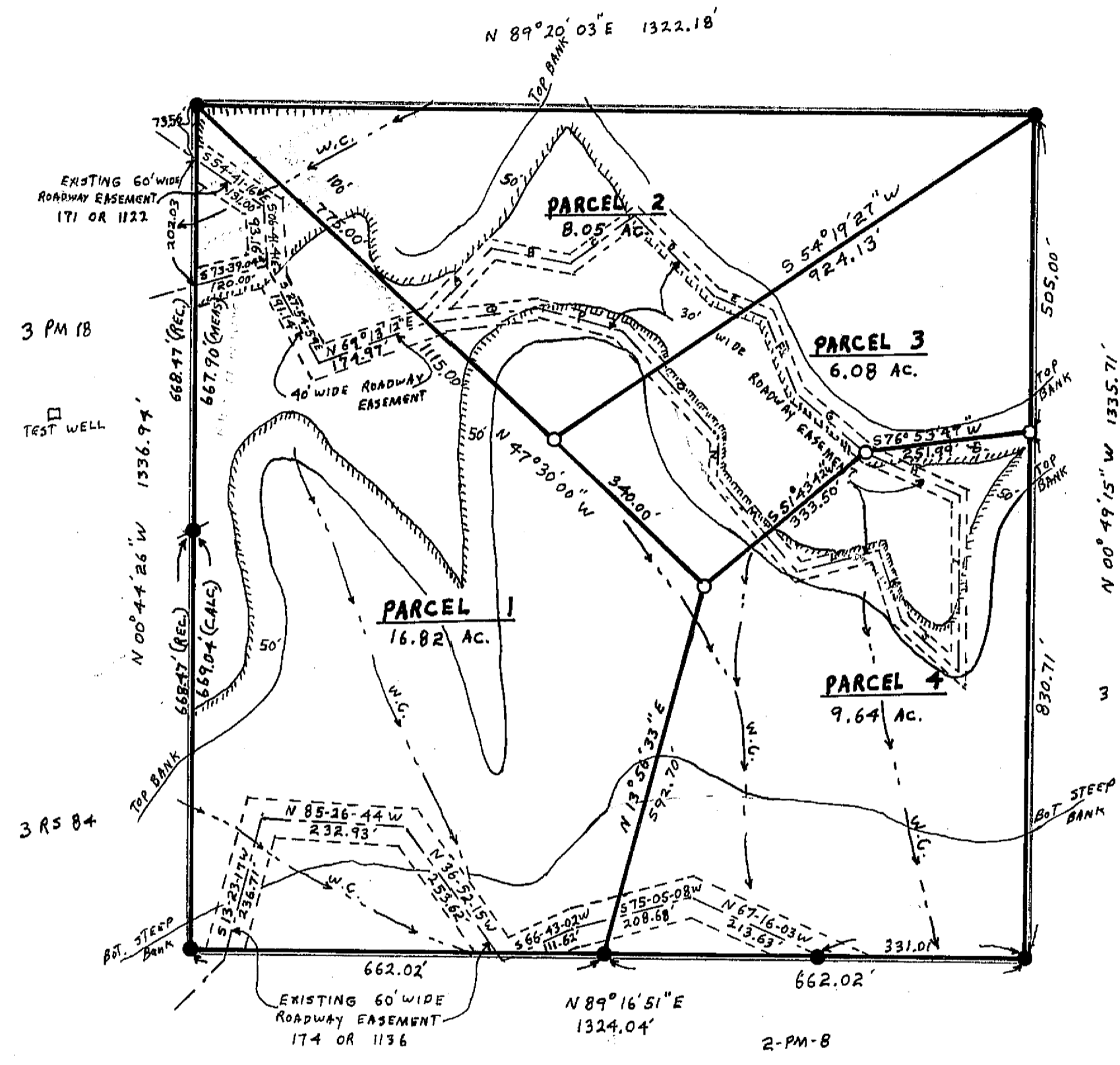
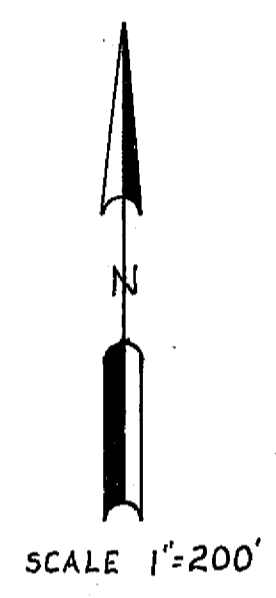


I, THE UNDERSIGNED COUNTY TAX COLLECTOR OF THE COUNTY OF PLUMAS, STATE OF CALIFORNIA, DO HEREBY CERTIFY THAT THERE ARE NO TAX LIENS AGAINST PARCELS 1 THROUGH 4 INCLUSIVE, AS SHOWN HEREON, OR UNPAID STATE, COUNTY, MUNICIPAL, OR LOCAL TAXES, OR SPECIAL ASSESSMENTS COLLECTED AS TAXES, EXCEPT TAXES OR ASSESSMENTS NOT YET PAYABLE, TAXES OR ASSESSMENTS WHICH ARE A LIEN, BUT NOT YET PAYABLE ARE ESTIMATED TO BE IN THE AMOUNT OF NONE.

*Douglas S. Redstreake*  
DOUGLAS S. REDSTREAKE  
PLUMAS COUNTY TAX COLLECTOR



☐ 30' WIDE ROADWAY EASEMENT

A.	N 41° 08' 32" E	161.09'
B.	S 78° 50' 54" E	125.97'
C.	N 54° 19' 19" E	135.36'
D.	S 44° 34' 01" E	173.70'
E.	S 68° 36' 54" E	87.38'
F.	S 22° 28' 30" E	129.29'
G.	S 50° 27' 07" E	155.24'
H.	S 67° 44' 13" E	153.25'
I.	S 00° 47' 04" E	290.21'
J.	N 46° 42' 46" W	120.54'
K.	N 19° 14' 13" W	112.72'
L.	S 74° 48' 06" W	135.37'
M.	N 41° 05' 46" W	195.14'
N.	N 03° 12' 13" W	68.54'
O.	N 42° 12' 29" W	217.19'
P.	N 74° 22' 16" W	144.16'
Q.	S 83° 06' 04" W	186.90'

SURVEYOR'S CERTIFICATE

THIS MAP WAS PREPARED BY ME OR UNDER MY DIRECTION AND IS BASED UPON A FIELD SURVEY IN CONFORMANCE WITH THE REQUIREMENTS OF THE SUBDIVISION MAP ACT AT THE REQUEST OF R. LAMBERT IN DEC. 1971. I HEREBY CERTIFY THAT IT CONFORMS TO THE APPROVED TENTATIVE MAP AND THE CONDITIONS OF APPROVAL THEREOF, AND THAT ALL PROVISIONS OF APPLICABLE STATE LAW AND LOCAL ORDINANCES HAVE BEEN COMPLIED WITH.

*Gerald C. Henderson*  
GERALD C. HENDERSON LS 3297

COUNTY SURVEYOR'S CERTIFICATE

THIS MAP HAS BEEN EXAMINED FOR CONFORMANCE WITH THE REQUIREMENTS OF SECTION 11575 OF THE SUBDIVISION MAP ACT THIS 4TH DAY OF Aug 1972.

*Darrell P. Payne*  
DARRELL P. PAYNE RCE 8896

COUNTY RECORDER'S CERTIFICATE

FILED THIS 18TH DAY OF January, 1972 AT 4:55 PM IN BOOK 4 OF PARCEL MAPS AT PAGE 8 AT THE REQUEST OF GERALD C. HENDERSON.

FEE 5.00  
RECORDING NO. 3294  
*Dorothy Ann Maskey*  
COUNTY RECORDER

**PARCEL MAP**  
OF A SUBDIVISION INTO FOUR PARTS  
FOR  
R. LAMBERT  
N.W. 1/4 OF NE 1/4 OF SECTION 24  
T. 22 N., R. 12 E., M.D.M.  
PLUMAS COUNTY, CALIFORNIA

NOTES  
BASIS OF BEARING IS TAKEN FROM THAT CERTAIN MAP FILED IN BOOK 3 OF PARCEL MAPS AT PAGE 18 PLUMAS COUNTY RECORDS.

LEGEND  
FND 3/4" IP TAGGED ACE 1294  
FND 1/2" IP TAGGED LS 3297  
SET 1/2" IP TAGGED LS 3297  
LEACH SETBACK LINE  
WATER COURSE

GERALD C. HENDERSON  
LICENSED LAND SURVEYOR  
P.O. Box 13  
PORTOLA, CALIFORNIA