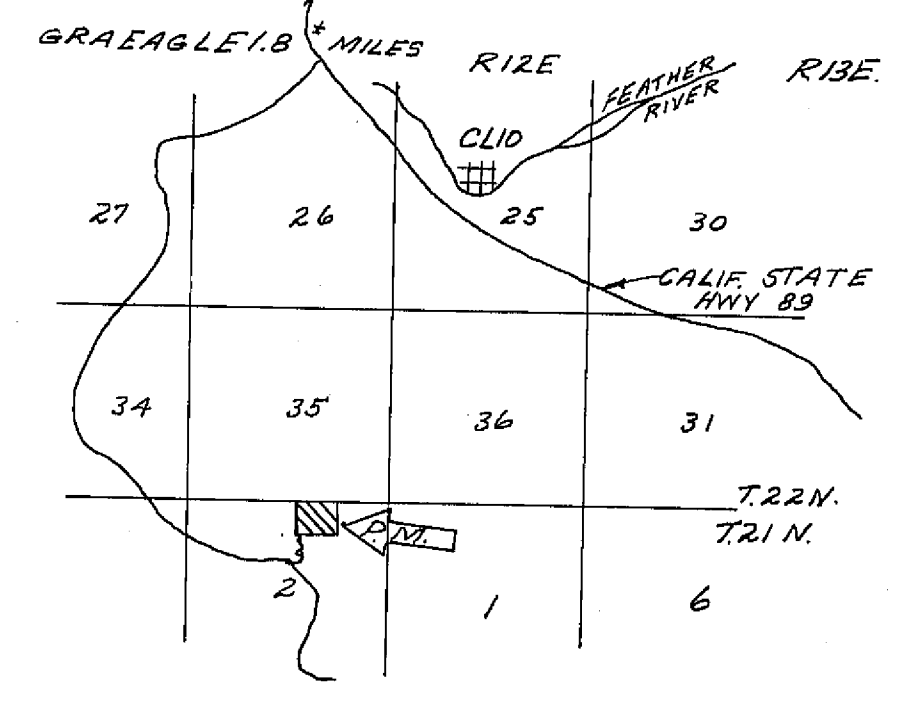
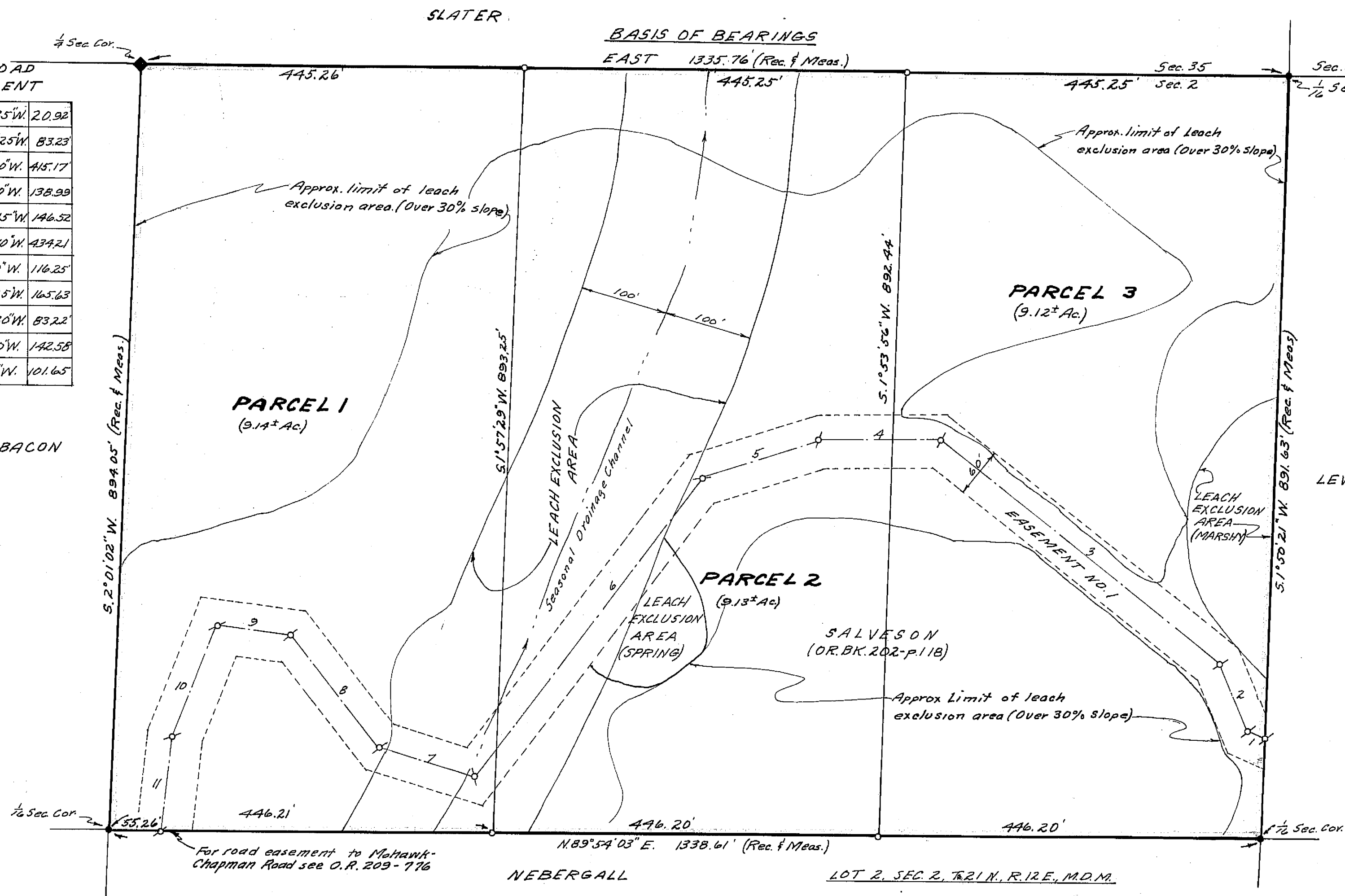


1	N.65°18'35"W	20.92
2	N.29°50'25"W	83.23
3	N.51°40'40"W	115.17
4	S.89°13'40"W	138.99
5	S.67°53'45"W	146.52
6	S.37°35'40"W	434.21
7	N.71°18'20"W	116.25
8	N.38°27'25"W	165.63
9	N.82°42'30"W	83.22
10	S.23°10'20"W	142.58
11	S.5°18'30"W	101.65



LOCATION MAP  
NO SCALE

- LEGEND**
- ◆ Found 3/4" Iron Pipe and mound of stone, R.C.E. 11173, and bearing trees
  - Found 1/2" Steel Pin and mound of stone, R.C.E. 11173, and bearing trees
  - Set 1/2" Steel Pin with plastic cap stamped "R.C.E. 11173" and mound of stone
  - ⊕ Survey point - no permanent monument set
  - Rec. Record (from deed, record map, etc.)
  - Meas. Measured
  - Ac. Acre
  - O.R. Official Records, Plumas County records
  - Bk. Book
  - P. Page

EASEMENT NO. 1 to be established by separate document, recorded concurrently with the filing of this map, as a non-exclusive easement for roadway, drainage, utilities and incidental purposes for the benefit of Parcels 1, 2 and 3 hereon.

**SURVEYOR'S CERTIFICATE**

This map was prepared by me or under my direction (and is based upon a field survey) in conformance with the Subdivision Map Act at the request of Jerome R. Salvesson, Feb. 23, 1972. I hereby certify that it conforms to the approved tentative map and the conditions of approval thereof; that all provisions of applicable state law and local ordinances have been complied with.

*John C. Simpson*  
John C. Simpson  
R.C.E. 11173



**COUNTY TAX COLLECTOR'S CERTIFICATE**

I, the undersigned, County Tax Collector of the County of Plumas, State of California, do hereby certify that there are no tax liens against Parcels One thru Three, Incl., as shown hereon, or unpaid state, county, municipal, or local taxes, or apl. assessments collected as taxes, except taxes or assessments not yet payable. Taxes or assessments which are a lien but not yet payable, are estimated to be in the amount of NONE.

*Alouisa J. Radetska*  
Plumas County Tax Collector

**NOTES**

1. Tentative Parcel Map approved by Plumas County Planning Commission September 27, 1971.
2. See Record of Survey, Bk. 4, p. 8 for additional data on boundary.
3. Access to the parcels shown hereon is by means of a U.S. Forest Service Road and a private road (and easement) across lands lying between the parcels hereon and said Forest Road.
4. No leach field permitted within 100 ft. of a seasonal drainage channel, nor upon slopes of over 30% or within 50 ft. of the top of such slope. The primary exclusion areas are approximately delineated hereon. There may be other secondary exclusion areas due to branch drainage channels or local areas of slopes over 30%.

**RECORDER'S CERTIFICATE**

Filed this 16<sup>th</sup> day of February, 1973, at 9:10 A.M. in Book 44 of Parcel Maps at Page 15 at the request of John C. Simpson.

*Dorothy New Masby*  
Plumas County Recorder

**COUNTY SURVEYOR'S CERTIFICATE**

This map has been examined this 1st day of February, 1973, for conformance with the requirements of Section 11575 of the Subdivision Map Act.

*Danell P. Payne*  
Plumas County Surveyor

**PARCEL MAP**  
OF  
**SUBDIVISION OF THREE PARCELS**

FOR  
**JEROME R. AND DOROTHY H. SALVESON**  
RECORD OWNERS

WITHIN LOT 2, SEC. 2, T.21 N., R.12 E., M.D.M.  
PLUMAS COUNTY, CALIFORNIA

JOHN C. SIMPSON, P.E.  
CIVIL ENGINEER  
P O BOX 719  
QUINCY, CALIFORNIA

Fee \$5.00  
File No. 44-15

41PM 15