

60' ROAD EASEMENT

		10	N.44°49'20"E.	146.38	
2	N.56°09'45"W.	90.42	11	N.30°53'20"E.	242.00
3	N.75°13'40"W.	183.47	12	N.46°22'40"E.	77.49
4	N.79°15'25"W.	191.91	13	N.60°21'30"W.	57.86
5	S.78°23'25"W.	304.94	14	N.42°37'00"W.	94.82
6	S.89°46'32"W.	188.89	15	N.53°04'10"W.	81.57
7	N.17°10'38"E.	114.52	16	N.39°15'00"W.	63.44
8	N.72°24'50"E.	123.67	17	N.80°19'40"W.	19.57
9	N.57°14'25"E.	76.36			

PACIFIC GAS & ELECTRIC CO.

COUNTY TAX COLLECTOR'S CERTIFICATE

I, the undersigned, County Tax Collector of the County of Plumas, State of Calif., do hereby certify that there are no tax liens against Parcels One thru Four, incl., as shown hereon, or unpaid state, county, municipal, or local taxes, or spl. assessments collected as taxes, except taxes or assessments not yet payable. Taxes or assessments which are a lien but not yet payable, are estimated to be in the amount of NONE.

Douglas R. Redbacher
Plumas County Tax Collector

COUNTY SURVEYOR'S CERTIFICATE

This map has been examined this 14th day of FEB, 1973, for conformance with the requirements of Section 11575 of the Subdivision Map Act.

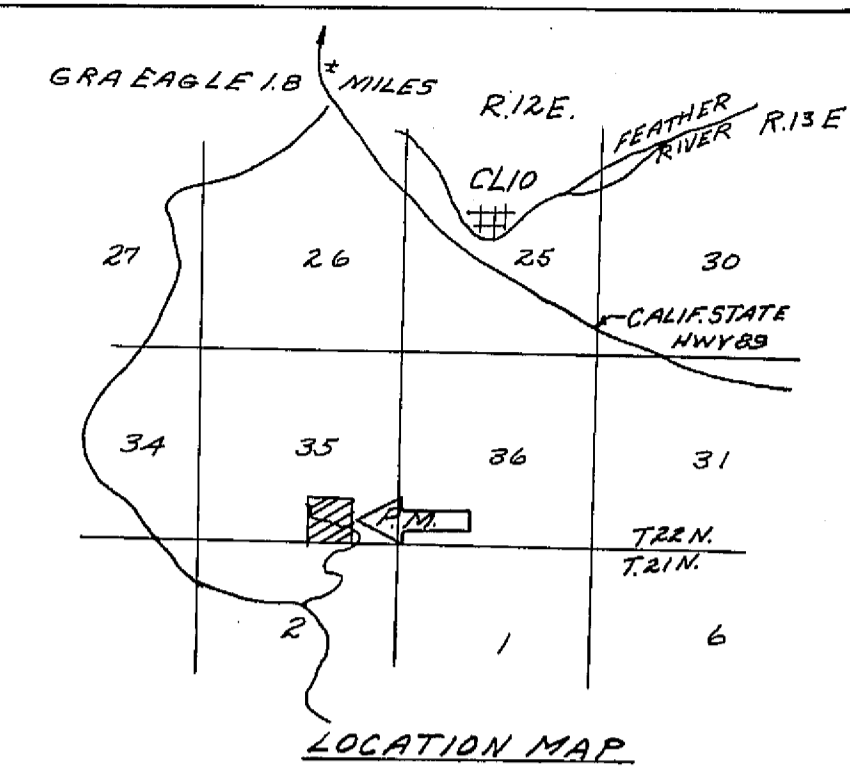
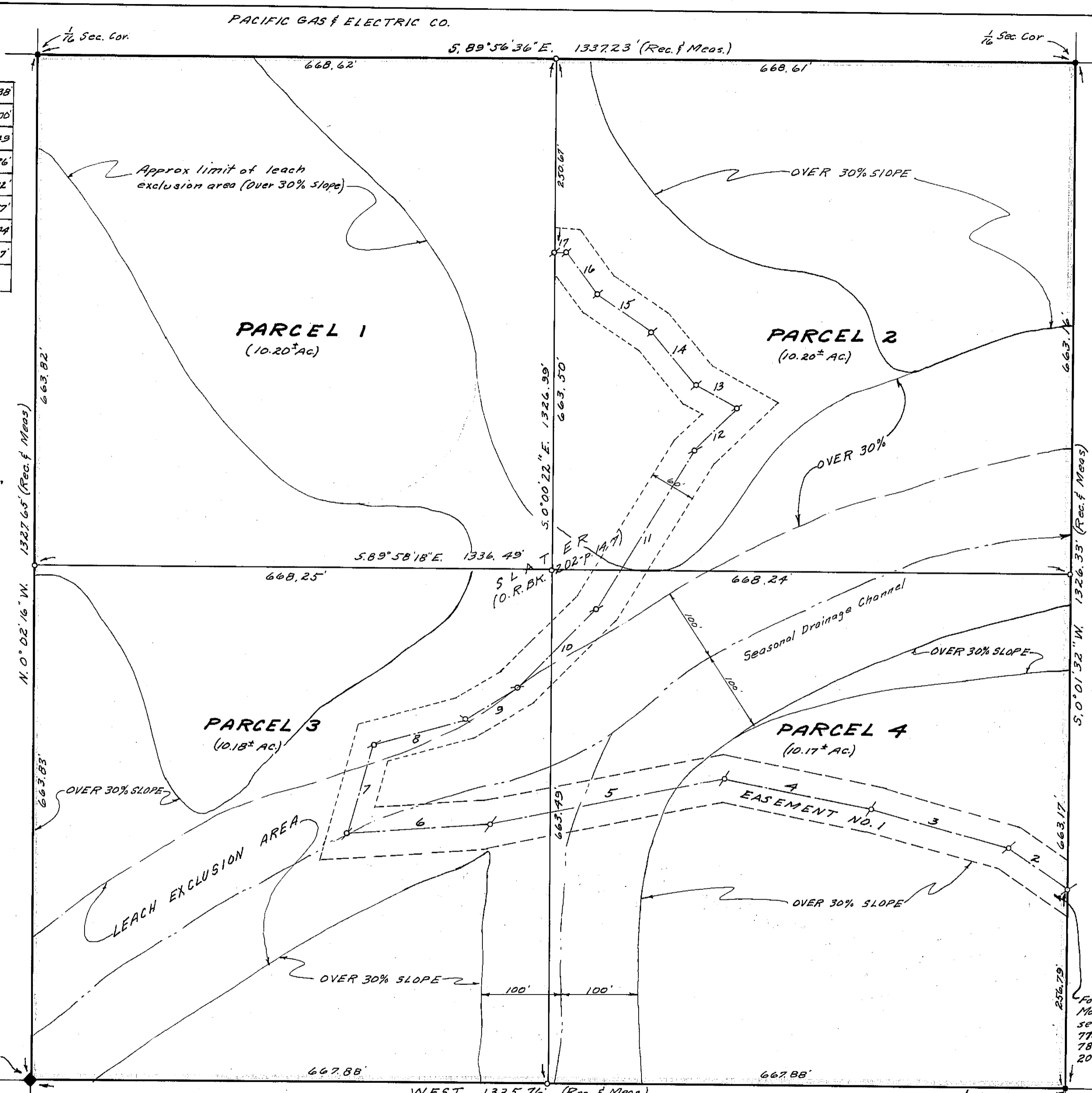
Darrell P. Payne
Plumas County Surveyor

RECORDER'S CERTIFICATE

Filed this 14th day of February, 1973, at 4:40 P.M. in Book 4 of Parcel Maps at Page 6 at the request of John C. Simpson.

Dorothy New Marley
Plumas County Recorder

Fee \$5.00
File No. 3641



SCALE 1"=100'

LEGEND

- ◆ Found 3/4" Iron Pipe and mound of stone, R.C.E. 11173, and bearing trees
- Found 1/2" Steel Pin and mound of stone, R.C.E. 11173, and bearing trees
- Set 1/2" Steel Pin with plastic cap stamped "R.C.E.11173" & mound of stone
- ⊗ Survey point - no permanent monument set
- Rec. Record (from deed, record map, etc.)
- Meas. Measured
- Ac. Acre
- O.R. Official Records, Plumas Co. records
- Bk. Book
- p. Page

EASEMENT NO. 1 to be established by separate document, recorded concurrently with the filing of this map, as a non-exclusive easement for roadway, drainage, utilities and incidental purposes for the benefit of Parcels 1, 2, 3, and 4 hereon.

NOTES

1. Tentative Parcel Map approved by Plumas Co. Planning Commission Sept. 27, 1971.
2. See Record of Survey, Bk. 4, p. 8 for additional data on boundary.
3. Access to the parcels shown hereon is by means of a U.S. Forest Service Rd. and a private road (and easement) across lands lying between the parcels hereon and said Forest Rd.
4. No leach field permitted within 100 ft. of a seasonal drainage channel, nor upon slopes of over 30% or within 50 ft. of the top of such slope. The primary exclusion areas are approximately delineated hereon. There may be other secondary exclusion areas due to branch drainage channels or local areas of slopes over 30%.

SURVEYOR'S CERTIFICATE

This map was prepared by me or under my direction (and is based upon a field survey) in conformance with the Subdivision Map Act at the request of Gene N. Slater, Feb. 23, 1972. I hereby certify that it conforms to the approved tentative map and the conditions of approval thereof; that all provisions of applicable state law and local ordinances have been complied with.

John C. Simpson
John C. Simpson
R.C.E. 11173

For road easement to Mohawk-Chapman Road see O.R. 209-776, O.R. 209-778, O.R. 209-780, O.R. 209-781, O.R. 209-783 and O.R. 209-784

PARCEL MAP OF SUBDIVISION OF FOUR PARCELS FOR

GENE N. AND RUTH SLATER
RECORD OWNERS

WITHIN THE SW 1/4 SE 1/4, SEC. 35 T. 22 N., R. 12 E. M.D.M.
PLUMAS COUNTY, CALIFORNIA



JOHN C. SIMPSON, P.E.
CIVIL ENGINEER
PO BOX 719
QUINCY, CALIFORNIA

4/11/76