

NOTES:

BASIS OF BEARING IS TAKEN FROM THE CALIFORNIA DIVISION OF HIGHWAYS RECORD MAP SHOWN AS S 89° 36' E ON HWY. 70. FOR SUBDIVISION OF SECTIONS SEE RECORD OF SURVEY BOOK 4 AT PAGE 27.

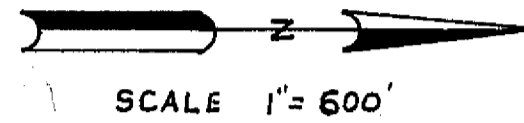
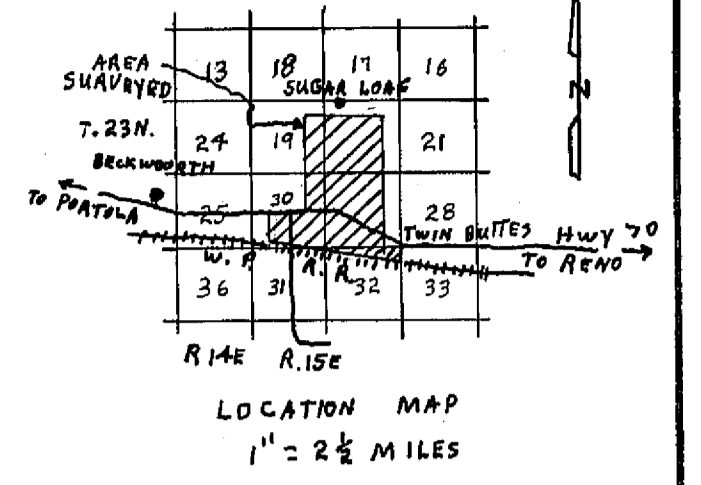
LEGEND

FND. STATE HIGHWAY MONUMENT
FND. 1/4 CORNER OR SECTION CORNER DESCRIBED BELOW
COMPUTED SECTION CORNER LOCATION
FND. 3/4 IP TAGGED LS 2843
COMPUTED CORNER LOCATION
SET 1/4 IP TAGGED LS 3297.

TAX COLLECTOR'S CERTIFICATE

I, THE UNDERSIGNED COUNTY TAX COLLECTOR OF THE COUNTY OF PLUMAS, STATE OF CALIFORNIA, DO HEREBY CERTIFY THAT THERE ARE NO TAX LIENS AGAINST PARCELS 1 THROUGH 4 INCLUSIVE, AS SHOWN HEREON, OR UNPAID STATE, COUNTY, MUNICIPAL, OR LOCAL TAXES, OR SPECIAL ASSESSMENTS COLLECTED AS TAXES, EXCEPT TAXES OR ASSESSMENTS NOT YET PAYABLE. TAXES OR ASSESSMENTS WHICH ARE A LIEN BUT NOT YET PAYABLE ARE ESTIMATED TO BE IN THE AMOUNT OF \$2,370.00.

Douglas S. Redstreak
DOUGLAS S. REDSTRAKE
PLUMAS COUNTY TAX COLLECTOR



SURVEYOR'S CERTIFICATE

THIS MAP WAS PREPARED BY ME OR UNDER MY DIRECTION AND IS BASED UPON A FIELD SURVEY IN CONFORMANCE WITH THE REQUIREMENTS OF THE SUBDIVISION MAP ACT AT THE REQUEST OF THE BECKWORTH RANCH CO. IN OCTOBER 1972. I HEREBY CERTIFY THAT IT CONFORMS TO THE APPROVED TENTATIVE MAP AND THE CONDITIONS OF APPROVAL THEREOF, AND THAT ALL PROVISIONS OF APPLICABLE STATE LAW AND LOCAL ORDINANCES HAVE BEEN COMPLIED WITH.

Gerald C. Henderson
GERALD C. HENDERSON LS 3297

COUNTY SURVEYOR'S CERTIFICATE

THIS MAP HAS BEEN EXAMINED THIS 6th DAY OF June 1973, FOR CONFORMANCE WITH THE REQUIREMENTS OF SECTION 11575 OF THE SUBDIVISION MAP ACT.

Darrell P. Payne
DARRELL P. PAYNE RGS 8596

COUNTY RECORDER'S CERTIFICATE

FILED THIS 6th DAY OF June 1973, AT 4:00 P.M., IN BOOK 4 OF PARCEL MAPS AT PAGE 34, AT THE REQUEST OF GERALD C. HENDERSON.

David New Marley
COUNTY RECORDER

FEE \$ 5.00

RECORDING NO. 5391

PARCEL MAP

OF A SUBDIVISION INTO FOUR PARTS
FOR
BECKWORTH RANCH CO. OCTOBER 1972
A PORTION OF SECTIONS 19, 20, 29, 30, 32
TOWNSHIP 23 N., RANGE 15E., MEM
PLUMAS COUNTY, CALIFORNIA

GERALD C. HENDERSON
LICENSED LAND SURVEYOR
P. O. BOX 13
PORTOLA, CALIFORNIA